

# MINI CIRCLE WELDER

## WELD NOZZLES OR TUBE SHEET

Increase welding production and improve weld quality



### Operator Controlled Mechanization

Bug-O Systems is committed to empowering our customers by providing operator controlled mechanized solutions for their welding, cutting and custom applications.

412-331-1776 [www.bugo.com](http://www.bugo.com)



## MCW MINI CIRCLE WELDER

The **Mini Circle Welder** is designed for applications such as wind tower brackets inside of wind power towers and small tubes of boiler tube sheet.

### Benefits:

- **Increase Productivity** - Mechanization enhances production efficiency by delivering consistent, repeatable results
- **Improve Quality** - Microcomputer regulated travel speed ensures consistent weld length
- **Reduce Distortion** - Precise speed and path control of welds
- **Diminish Material Handling** - Precise speed and path control of welds
- **Improve Worker's Environment** - Moves the operator further away from fumes

### Features:

The **Mini Circle Welder** incorporates the following features:

- LED screen shows the exact travel speed
- Welds 1.18"-3.94" (30-100 mm) diameter
- Adjustable crater fill
- The travel speed is controlled by a microcomputer to achieve precise rotation, so the programmed weld length is consistent
- When welding is stopped, the built-in automatic crater fill function improves the weld quality
- Working position setup is simple with provided torch adjustment device
- After welding starts, the machine will weld one turn and then automatically stop
- After one cycle of automatic welding is completed, the machine will weld in the opposite direction to prevent cable twisting
- When using a collet type centering device, the operator turns the carrying handle to secure the machine to the weldment
- If machine is used with the optional 3-jaw chuck, the above statement does not apply
- An 18 volt, 4.0Ah rechargeable battery powers the machine

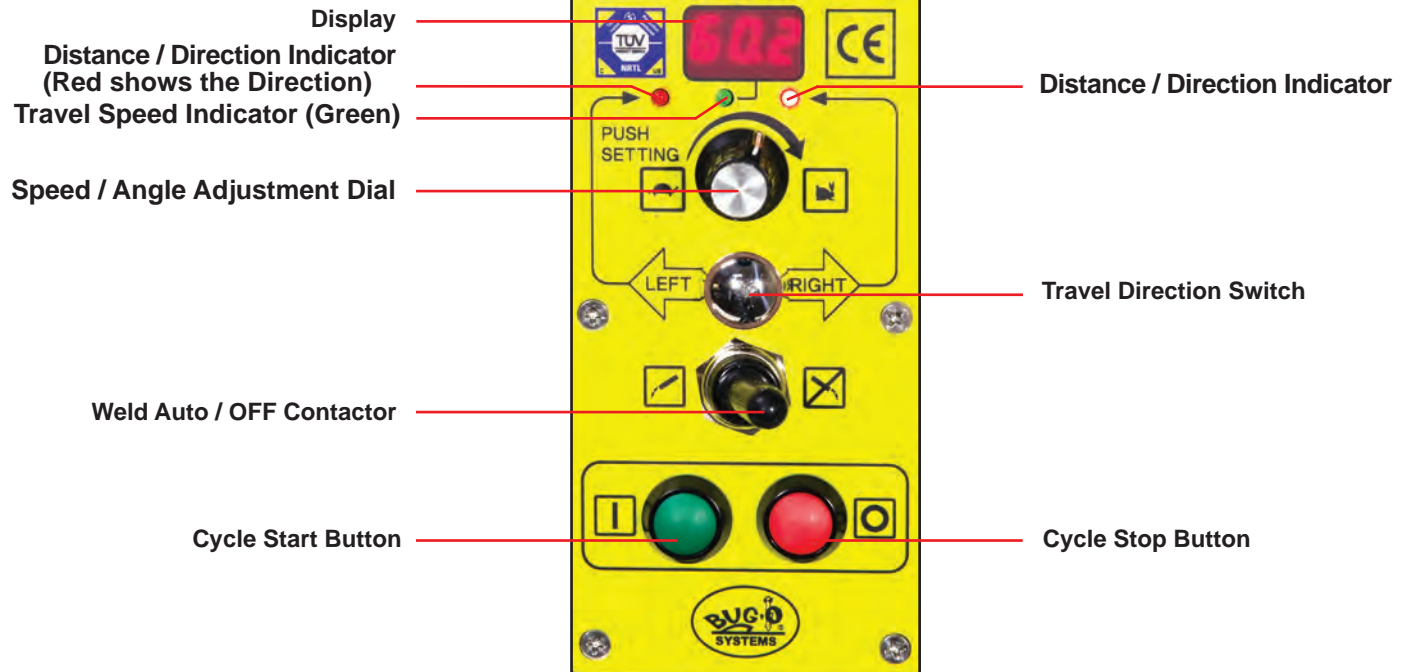






## MCW MINI CIRCLE WELDER

### Controls:



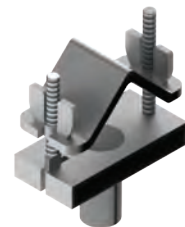
### Accessories:



**KBUG-1100**  
Torch Clamp Assembly



**KBUG-1100-1 Torch Holder**  
For 1" (25.4 mm) diameter torch



**SP-250523-DAK-A**  
Torch Clamp Assembly  
For 1.5" diameter torch



**100-1481-XXX**  
Collett Assembly  
(XXX= The inner diameter of the  
work piece in millimeters)



**100-1482-001**  
3 Jaw Chuck



## MCW MINI CIRCLE WELDER

### Technical Data:

#### Part Numbers:

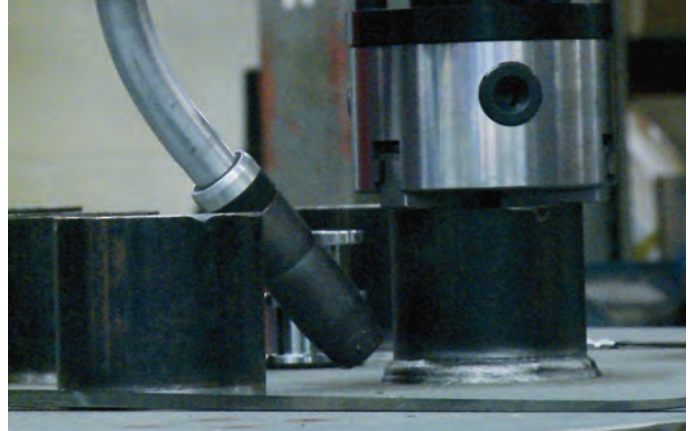
100-1480-120 120VAC/50-60Hz/1Ph

100-1480-240 240VAC/50-60Hz/1Ph

**Net Weight:** 17.12 lbs (7.8 kg)

**Dimensions:** 13.03" x 8.7" x 17.24"  
(331 x 221 x 438 mm)

**Travel Speed:** 0 - 185.43 in/min (0 - 471 cm/min)



### Dimensions:

