



# K-BUG 5100

COMPACT PENDULUM WEAVE WELDER



Bug-O Systems is committed to empowering our customers by providing operator controlled mechanization solutions for their welding, cutting and custom applications.

412-331-1776 [www.bugo.com](http://www.bugo.com)

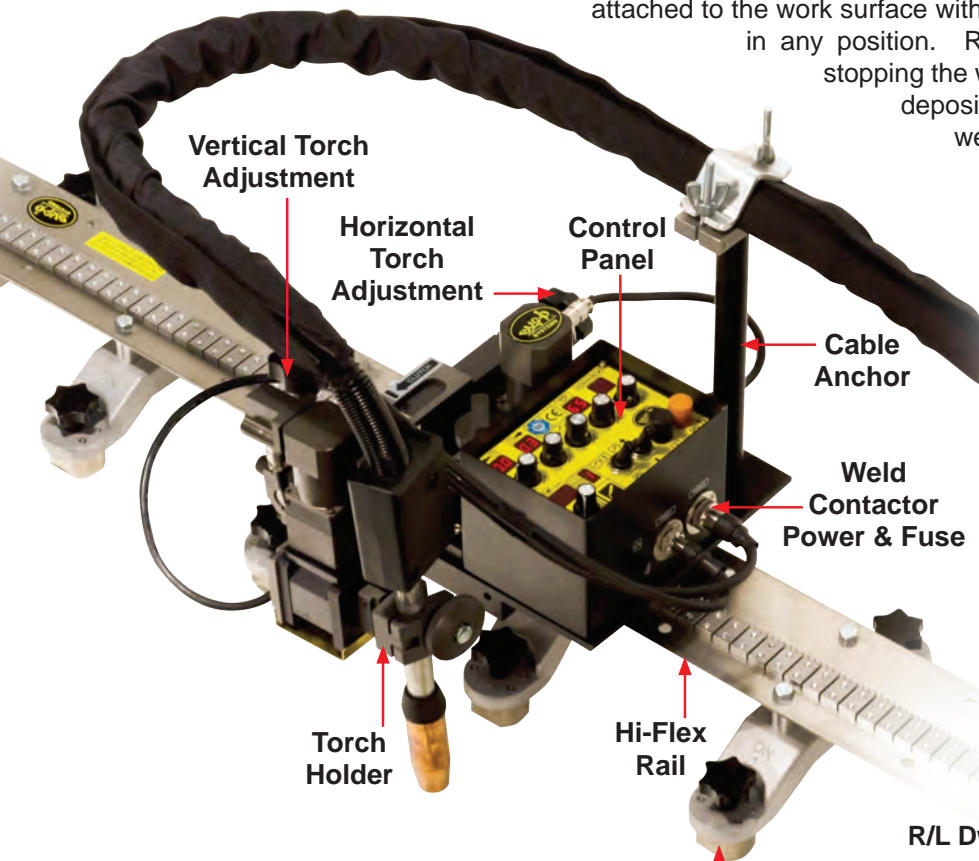




# K-BUG 5100 DIGITAL COMPACT ALL POSITION WEAVE WELDER

The **KBUG-5100** is a compact portable welding unit with an integrated pendulum weaver for all position welding. Mounted to BUG-O Systems Hi-Flex rail and attached to the work surface with magnets or vacuum cups and pump system in any position. Regulated travel speed without starting and stopping the welding process will eliminate excessive weld deposition and help reduce defects. Precise weld weaving with programmable dwells will improve weld penetration and control undercut.

Control of all tractor and welding functions can be set or adjusted on the tractor's panel or remotely via wireless remote control. Maximum wireless remote control range is 32 ft. (10 m). Remote includes a magnetic back for operator convenience.



On/Off Magnet Bar Assembly



## Five Weave Patterns to choose from with just a push of a button.

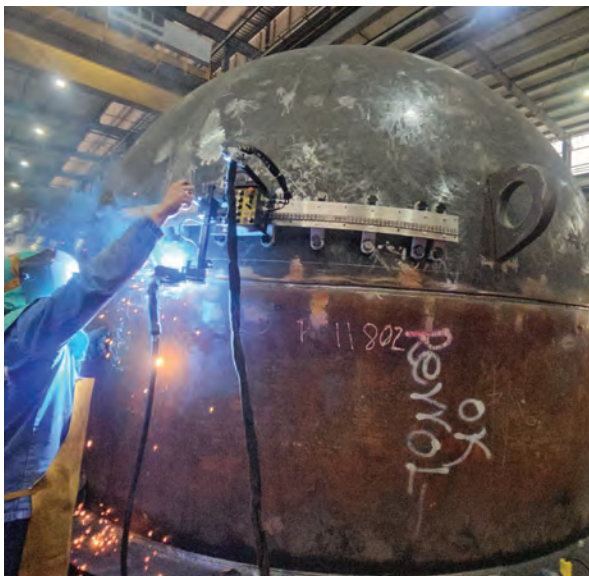
- |  |   |
|--|---|
|  | 1. <b>NO WEAVE</b> - Straight line  |
|  | 2. <b>RUN</b> - The tractor moves continuously during the weave and dwell   |
|  | 3. <b>WEAVE</b> - The tractor and weave both stop during dwells   |
|  | 4. <b>STEP</b> - The tractor is stationary during the weave and moves only during the dwell   |
|  | 5. <b>TRACTOR STOP ON DWELL</b> - When the weave moves away from tractor, the tractor is stationary<br>When weave moves towards tractor, the tractor also moves |



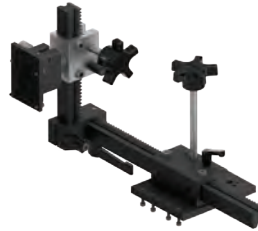
# K-BUG 5100 DIGITAL COMPACT ALL POSITION WEAVE WELDER

## Features:

- High torque, low inertia motor for precise stops and starts
- Lightweight and easy to carry, weighing just 18 lbs. (8.2 kg)
- Hi-Flex Rail with rack and pinion drive insures precise path and consistent speed
- Hi-Flex Rail flat or bent inside/outside to a radius of 30" (762 mm)
- Precision drive motor prevents unit from moving when power is off
- High geared pendulum motor prevents torch movement when power is off
- High speed motor for pendulum weaving
- Programmable puddle control and crater fill
- Independent control of pendulum weaving right and left dwell times
- Drive unit motor overload protection
- Closed loop speed and position control for adjustable and repeatable operation
- Closed loop speed control to prevent drift from center weld position
- Storage of welding parameters after power is turned off
- Carriage Travel and arc start in one switch
- Wireless Remote Control
- Independent control of puddle build and crater fill
- Weld Contactor ON/OFF Switch



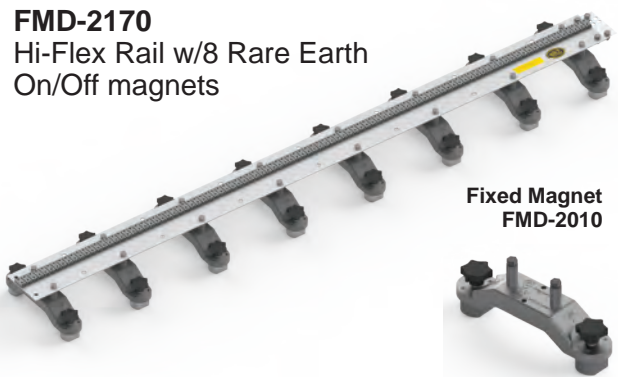
## Racking Option:



**KBUG-5115**  
Optional Bug-O Style racking group

## Rail Options:

The **K-BUG 5100** package is designed to run on Bug-O Systems Hi-Flex Rail (FMD) for uses in curved or straight line applications. Carriage wheels run on stainless steel rail that can be mounted with magnets or vacuum system.

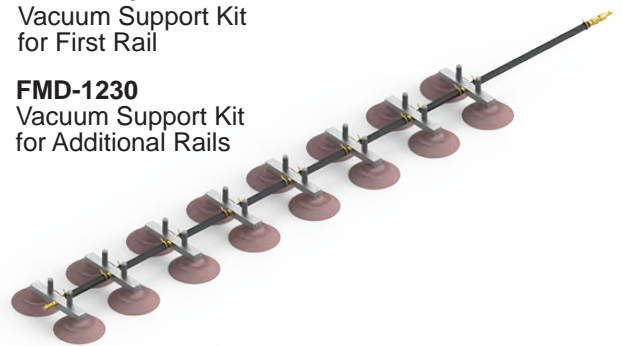


**FMD-2170**  
Hi-Flex Rail w/8 Rare Earth On/Off magnets

**Fixed Magnet FMD-2010**

**FMD-1220**  
Vacuum Support Kit for First Rail

**FMD-1230**  
Vacuum Support Kit for Additional Rails



**Vacuum Pump Kit**  
(Necessary for use w/vacuum cups)

ARV-2020 120 Volt/50-60 Hz or 100-1297-120 120 Volt/50-60 Hz  
ARV-2030 240 Volt/50-60 Hz or 100-1297-240 240 Volt/50-60 Hz





# K-BUG 5100 DIGITAL COMPACT ALL POSITION WEAVE WELDER

## Accessories:

### All-In-One (AIO) Mechanized Guns for KBUGs

Choose from the options below to fit your application.

#### 1 GUN



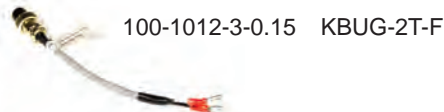
#### Each gun includes:

- 5X 100-0490 / 65-3103 EHD Retaining Head/Diffuser
- 10X 100-0489 / 65-1135 EHD Contact Tip 0.035"
- 10X 100-0488 / 65-1145 EHD Contact Tip 0.045"
- 2X 100-0635 / 65-2550 Nozzle, Copper 1/2" Bore, 1/8" Tip Recess
- 1X 100-0492 / 64-4515 0.045-1/16", 15 Ft., Coil Liner

- 100-1011-1-4.5-XX** 500 amp Lightning Auto Gun, 180 degree gooseneck with integrated cable management system
- 100-1011-1-4.5-T** Includes 100-0484 Tweco #4 Power Pin
- 100-1011-1-4.5-M** Includes 100-0485 Miller Power Pin
- 100-1011-1-4.5-L** Includes 100-0486 Lincoln Power Pin Old Style

#### 2 BUG-O TRIGGER CABLE

Connects the contact cable in the torch to the contact trigger amphenol on the bug.



#### 3 AIO TO BUG POWER ADAPTER (Bug End)

100-1013-3-0.15 AC Power Cable, KBUG, 0.15M

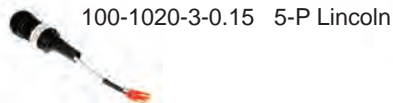


#### 4 WIRE FEEDER TRIGGER CABLES (Feeder End)

Required to choose 1

Connects the contact cable in the torch to the wire feeder.

100-1020-1-0.15 (two male spade connectors) 100-1020-2-0.15 4-P Miller



#### 5 STANDARD POWER CORD (From Rear of Gun Cable to Power Input)

BUG-9454 120VAC

BUG-9454-240 240VAC



BUG-9454-42 42VAC



### Optional Torch Holders Available:



**KBUG-3120-1**  
1" Torch Holder



**KBUG-4190**  
1" KBUG Gun Clamp 3/4"-2"



**100-0953**  
Gun Clamp Assembly 3/4"-2"

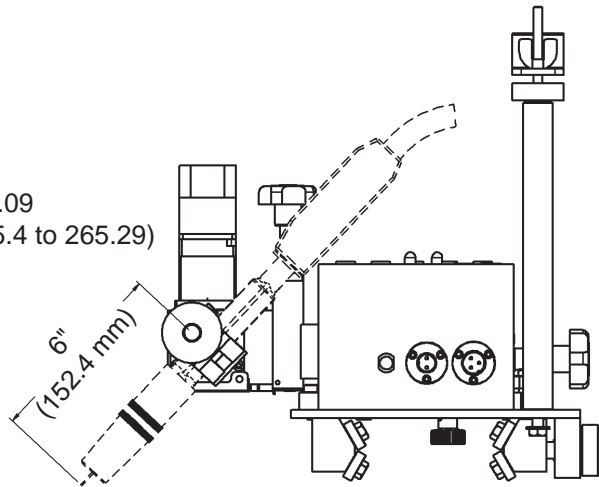
Contact American Torch Tip for other consumables: 800-342-8477



# K-BUG 5100 DIGITAL COMPACT ALL POSITION WEAVE WELDER

## Technical Data:

<b>Power Requirements:</b>		<b>Weaver Speed:</b>	0 to 188 in/min (477 cm/min)
<b>KBUG-5100</b>	120VAC/50-60Hz/1Ph	<b>Weave Width*:</b>	0 to 1.23" (31.24 mm)
<b>KBUG-5102</b>	240VAC/50-60Hz/1Ph	<b>Cycles*:</b>	68 cycles per min. at 1.05" (26.67 mm) stroke 115 cycles per min. at .525" (13.34 mm) stroke 200 cycles per min. at .25" (6.35 mm) stroke
<b>Net Weight:</b>	18 lbs. (8.2 kg.)	<b>Welding Position:</b>	All position
<b>Shipping Weight:</b>	24 lbs. (10.9 kg.)		Digital LED speed indicator: 1 to 34.7 ipm (25 to 88 cm/min)
<b>Torch Holder:</b>	Fits barrels up to 0.75 in (19 mm) dia.		
<b>Vertical Lifting Power:</b>	50 lbs. (22.7 kg.)		
<b>Tractor Dimensions:</b>			
<b>(WxLxH) inch:</b>	12.34 to 14.9 x 9.67 x 8.48 to 10.09		
<b>mm:</b>	(313.44 to 378.46 x 245.62 x 215.4 to 265.29)		
<b>Torch Support Adj.:</b>			
<b>Y-Stroke:</b>	2.05" (52 mm) ± 5%		
<b>Z-Stroke:</b>	1.69" (43 mm) ± 5%		
<b>SPK-KBUG-5000:</b>	Spare Parts Kit		



\* When torch Pivot-to-Tip length is 6" (152.4 mm) as shown above. Increasing the Pivot-to-Tip length will increase the maximum speed and the weave width.

## Dimensions:

