

K-BUG 2000

DIGITAL, COMPACT, DUAL TORCH FILLET WELDER

A magnetic travel carriage for welding continuous or stitch welds in the horizontal position.

Increase welding production, improve weld quality and eliminate operator fatigue.



Bug-O Systems

Operator Controlled
Mechanization

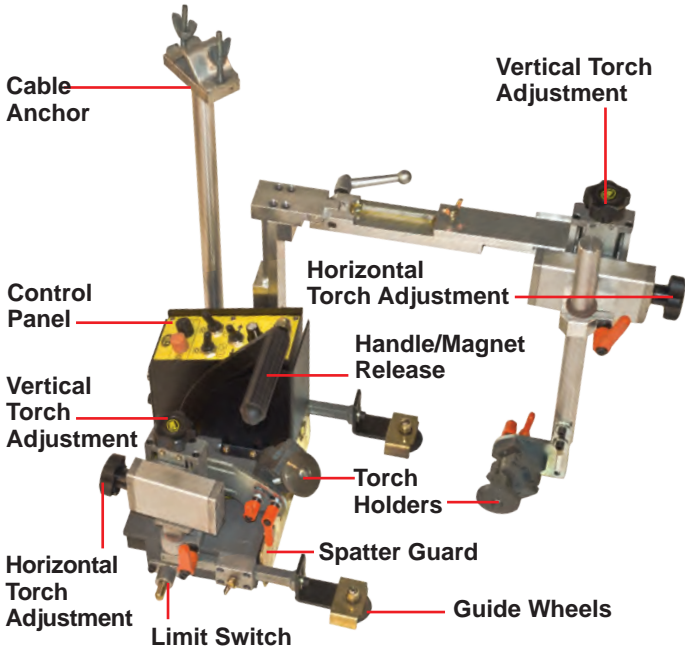
412-331-1776 www.bug-o.com

Bug-O Systems is committed to empowering our customers by providing operator controlled mechanized solutions for their welding, cutting and custom applications.

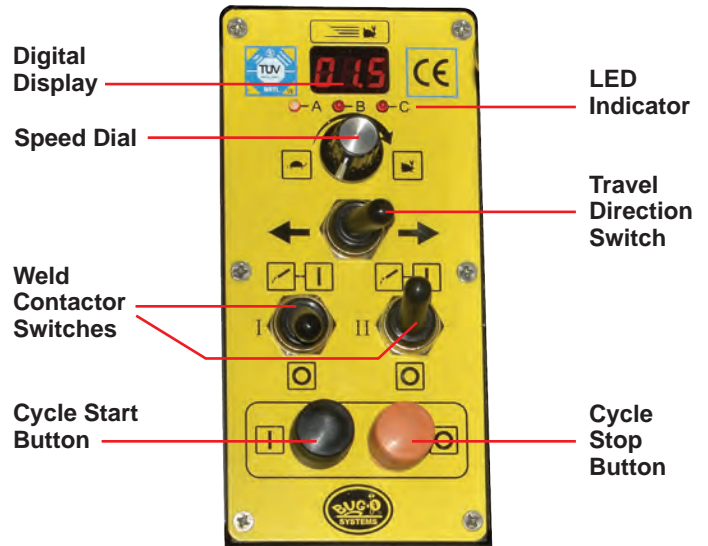


K-BUG 2000 DIGITAL, COMPACT, DUAL TORCH FILLET WELDER

The **K-BUG 2000** digital, compact dual torch fillet welder is a portable straight line travel carriage. Creating two continuous or intermittent “stitch” welds at a constant travel speed the **K-BUG 2000** simultaneously produces high quality, uniform welds in a fraction of the time compared to manual welding. Regulated travel speed eliminates excessive weld deposition and helps reduce defects. The machine’s guide wheels track the workpiece to provide precise, continuous weld placement.



Controls:



Features:

The **K-Bug 2000** incorporates the following features:

- State of the art digital technology insures accuracy
- High torque, low inertia motor for precise stops and starts
- Drive motor overload protection
- Lightweight carriage with powerful permanent magnets to grip work piece
- Guide wheels track web or flange of work piece
- Closed loop speed control provides adjustable and repeatable control
- Stores travel settings after power is turned off
- Crater fill at the beginning and end of welding
- Two (2) Weld Contactor Enable switches to independently activate each welding torch
- Carriage Travel and arc start in one switch
- Built-in Limit Switches stop tractor travel and welding when activated
- Will climb up a 75° incline
- Digital programming of weld length, skip length and total travel distance





K-BUG 2000 DIGITAL, COMPACT, DUAL TORCH FILLET WELDER

Accessories:

All-In-One (AIO) Mechanized Guns for KBUGs

Choose from the options below to fit your application.

1 GUN



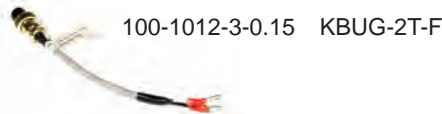
Each gun includes:

- 5X 100-0490 / 65-3103 EHD Retaining Head/Diffuser
- 10X 100-0489 / 65-1135 EHD Contact Tip 0.035"
- 10X 100-0488 / 65-1145 EHD Contact Tip 0.045"
- 2X 100-0635 / 65-2550 Nozzle, Copper 1/2" Bore, 1/8" Tip Recess
- 1X 100-0492 / 64-4515 0.045-1/16", 15 Ft., Coil Liner

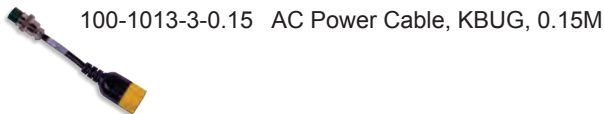
- 100-1011-1-4.5-XX** 500 amp Lightning Auto Gun, 180 degree gooseneck with integrated cable management system
- 100-1011-1-4.5-T** Includes 100-0484 Tweco #4 Power Pin
- 100-1011-1-4.5-M** Includes 100-0485 Miller Power Pin
- 100-1011-1-4.5-L** Includes 100-0486 Lincoln Power Pin Old Style

2 BUG-O TRIGGER CABLE

Connects the contact cable in the torch to the contact trigger amphenol on the bug.

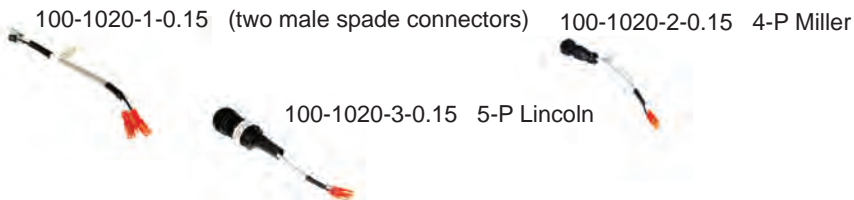


3 AIO TO BUG POWER ADAPTER (Bug End)



4 WIRE FEEDER TRIGGER CABLES (Feeder End)

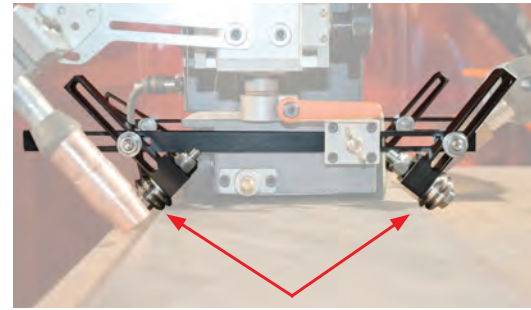
Required to choose 1
Connects the contact cable in the torch to the wire feeder.



5 STANDARD POWER CORD (From Rear of Gun Cable to Power Input)



Contact American Torch Tip for other consumables: 800-342-8477



KBUG-2070-__ Four Wheel Beam Guide Arm Kit

KBUG-2070-6 For 6-8" (152-203 mm) flat bar stiffeners

KBUG-2070-12 For 8-12" (203-304 mm) flat bar stiffeners

MSQ-165
ON/OFF Magnetic Stop for limit switch activation



KBUG-2067 Magwheel Add-On Kit

Used for welding curved or irregular shapes



Optional Torch Holders Available:



KBUG-4089
Torch Holder (BUG-O Style)



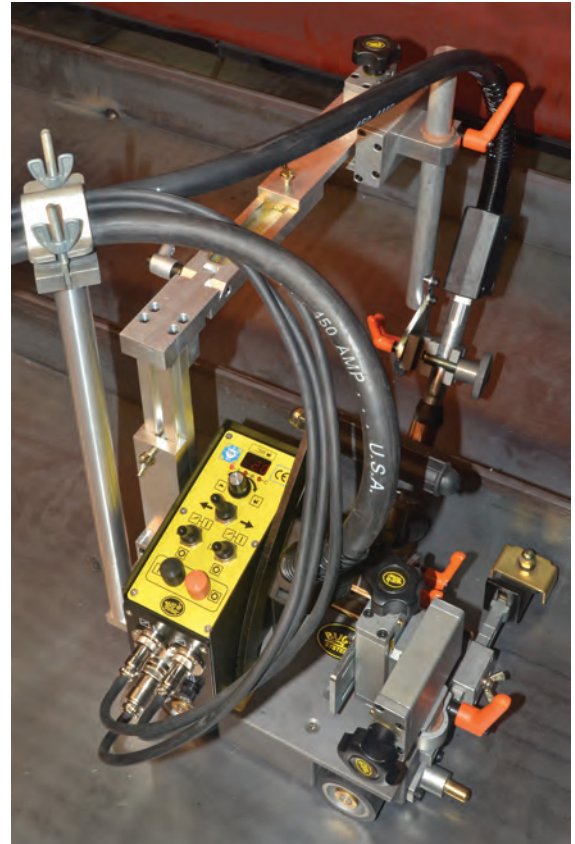
KBUG-2080-1
1" Torch Holder



K-BUG 2000 DIGITAL, COMPACT, DUAL TORCH FILLET WELDER

Technical Data:

Part Numbers:	KBUG-2000 (120VAC) KBUG-2002 (240VAC) KBUG-2004 (42VAC)
Power:	120VAC/50-60Hz/1Ph 240VAC/50-60Hz/1Ph 42VAC/50-60Hz/1Ph
Net Weight:	23.2 lbs (10.5 kg)
Shipping Weight:	28.6 lbs (13 kg)
Shipping Dimensions:	20" x 19" x 15" (508 x 483 x 381 mm)
Welding Position:	Flat "down hand" position
Pulling Power:	11 lbs (5 kg)
Torch Holder:	Fits barrels up to 0.75 in (19 mm) dia.
Travel Speed:	0.3 - 37 in/min (0.1 - 95 cm/min)
Max Stiffener Height:	11.81" (300 mm)



Dimensions:

