

# K-BUG 1200 & K-BUG 1200-BAT

**GEAR DRIVEN FILLET WELDER & CORDLESS,  
BATTERY OPERATED FILLET WELDER,  
BOTH WITH DIGITAL CONTROLS**

**Increase welding production, improve weld  
quality, with the freedom of no power cord.**



**Bug-O Systems**

**Operator Controlled Mechanization**

**412-331-1776**

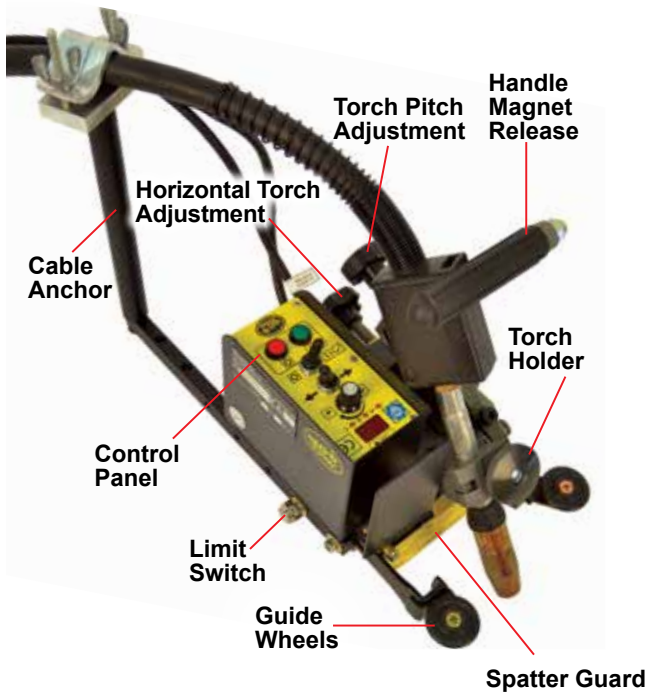
**[www.bugo.com](http://www.bugo.com)**

Bug-O Systems is committed to empowering our customers by providing operator controlled mechanized solutions for their welding, cutting and custom applications.





# K-BUG 1200 & K-BUG 1200-BAT GEAR DRIVEN FILLET WELDER & CORDLESS BATTERY OPERATED, GEAR DRIVEN FILLET WELDER



The **K-BUG 1200** and the **NEW K-BUG 1200-BAT** are compact, portable, straight-line tractors equipped with rugged gear drives and an improved torch adjustment profile. The Gear Drive has been incorporated to handle the strain of prolonged operation and to improve reliability. Creating continuous or intermittent "stitch" welds at a constant travel speed produces high quality, uniform welds in a fraction of the time required for manual welding. Regulated travel speed eliminates excessive weld deposition and helps reduce defects. Precise puddle control improves penetration and controls undercut.



Battery and charger included with purchase of KBUG-1200-BAT or KBUG-1202-BAT



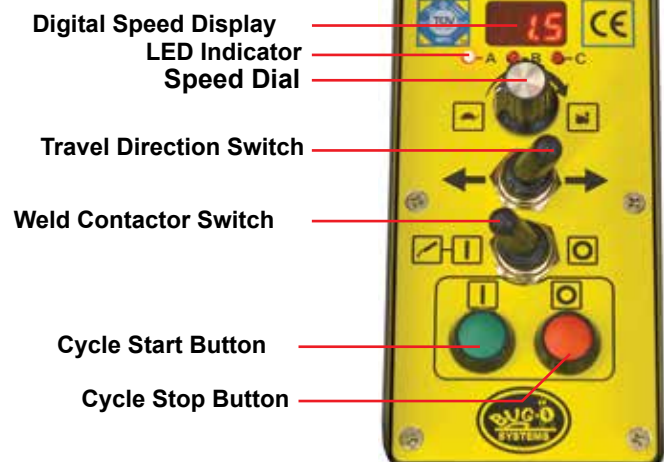
## Features:

The **K-BUG 1200 & K-BUG 1200-BAT** incorporate the following features:

- State of the art digital technology insures accuracy
- Cordless 18volt battery capable of running 2 shifts per charge (K-BUG 1200-BAT model only)
- High torque, low inertia motor for precise stops and starts
- Gear driven for greater reliability
- Drive unit motor overload protection
- Low profile, easy to access torch adjustment knobs
- Stores travel settings after power is turned off
- Programmable puddle build and crater fill times
- Weld Contactor Enable Switch
- Carriage Travel and Arc Start in one switch
- Guide wheels track web or flange of work piece
- Capable of traveling up to a 75° incline
- Lightweight carriage with powerful permanent magnets to grip work piece
- Closed loop speed control provides adjustable and repeatable control
- Built-in Stainless Limit Switches stop tractor travel and welding when activated
- Digital programming of weld length, skip length and total travel distance
- Gasket sealed housing provides a IP63 rating



## Controls:





# K-BUG 1200 & K-BUG 1200-BAT GEAR DRIVEN FILLET WELDER & CORDLESS BATTERY OPERATED, GEAR DRIVEN FILLET WELDER

## Accessories:

### All-In-One (AIO) Mechanized Guns for KBUGs

Choose from the options below to fit your application.

#### 1 GUN



#### Each gun includes:

- 5X 100-0490 / 65-3103 EHD Retaining Head/Diffuser
- 10X 100-0489 / 65-1135 EHD Contact Tip 0.035"
- 10X 100-0488 / 65-1145 EHD Contact Tip 0.045"
- 2X 100-0635 / 65-2550 Nozzle, Copper 1/2" Bore, 1/8" Tip Recess
- 1X 100-0492 / 64-4515 0.045-1/16", 15 Ft., Coil Liner

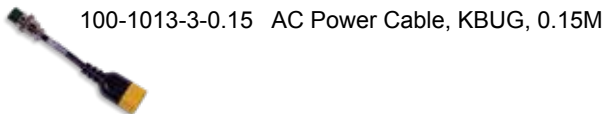
- 100-1011-1-4.5-XX** 500 amp Lightning Auto Gun, 180 degree gooseneck with integrated cable management system
- 100-1011-1-4.5-T** Includes 100-0484 Tweco #4 Power Pin
- 100-1011-1-4.5-M** Includes 100-0485 Miller Power Pin
- 100-1011-1-4.5-L** Includes 100-0486 Lincoln Power Pin Old Style

#### 2 BUG-O TRIGGER CABLE

Connects the contact cable in the torch to the contact trigger amphenol on the bug.

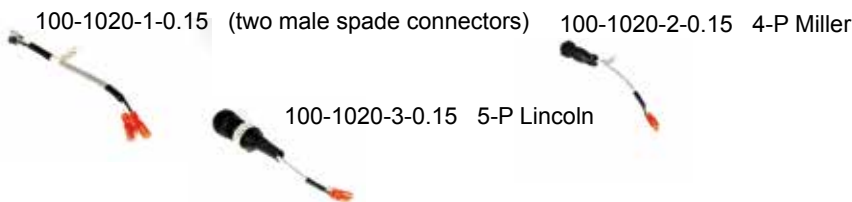


#### 3 AIO TO BUG POWER ADAPTER (Bug End)



#### 4 WIRE FEEDER TRIGGER CABLES (Feeder End)

Required to choose 1  
Connects the contact cable in the torch to the wire feeder.



#### 5 STANDARD POWER CORD (From Rear of Gun Cable to Power Input)



Contact American Torch Tip for other consumables: 800-342-8477

**KBUG-1100-1 Torch Holder**  
For 1" (25.4 mm) diameter torch

**KBUG-1290 Cable Anchor**  
Now included as standard



**100-0902 Guide Rail**  
6' (1.83 m) guide rail with on/off magnets

**KBUG-1201-BAT Replacement Battery**

**KBUG-1205-BAT**  
120V Battery Charger

**KBUG-1206-BAT**  
240V Battery Charger

**KBUG-1170 Long Arm Assembly**  
Used to extend torch holder for welding outside corners and can adapt for goose neck welding torch (Guide wheel spacers .25" .5" & .75" are included)



**MSQ-165**  
ON/OFF Magnetic Stop for limit switch activation

**KBUG-1067 Magwheel Add-On Kit**  
Used for welding curved irregular shapes





# K-BUG 1200 & K-BUG 1200-BAT GEAR DRIVEN FILLET WELDER & CORDLESS BATTERY OPERATED, GEAR DRIVEN FILLET WELDER

## Technical Data:

**Part Numbers:** **KBUG-1200** 120VAC/50-60Hz/1Ph  
**KBUG-1202** 240VAC/50-60Hz/1Ph  
**KBUG-1204** 42VAC/50-60Hz/1Ph

**Net Weight:** 13 lbs (5.9 kg)

**Shipping Weight:** 22 lbs. (10 kg.)

**Shipping Dimensions:** 15.25" x 13" x 15"  
 (387 x 330 x 381 mm)

**Welding Position:** Flat "down hand" position

**Pulling Power:** 15 lbs. (6.8 kg.)

**Tractor Speed:** 1.5 - 37 in/min (3 - 95 cm/min)

**Torch Holder:** Fits barrels up to 0.75" (19 mm) dia.

**Drive wheels:** Rated to 400°F (204°C)

**Ingress Protection:** IP63 Rating  
 Total dust ingress protection  
 Water spray < 60° from vertical

**Part Numbers:** **KBUG-1200-BAT** 120VAC/50-60Hz/1Ph  
**KBUG-1202-BAT** 240VAC/50-60Hz/1Ph

**Net Weight:** 17 lbs (5.3 kg) (includes charger)

**Shipping Weight:** 26 lbs. (12 kg.)

**Shipping Dimensions:** 15.25" x 13" x 15"  
 (387 x 330 x 381 mm)



The **K-BUG 1200 & K-BUG 1200-BAT** features "Torch Quick Connect" which allows the operator to easily remove or install the torch from the machine for quick nozzle cleaning, wire cutting and hand welding.

