

INSTRUCTIONS AND PARTS MANUAL

POWER RACK SYSTEM

Please record your equipment identification information below for future reference. This information can be found on your machine nameplate.

Model Number: _____

Serial Number: _____

Date of Purchase: _____

Whenever you request replacement parts or information on this equipment, always supply the information you have recorded above.

LIT-POWERRACK-IPM-10-8-2024

Bug-O Systems is committed to empowering our customers by providing operator controlled mechanized solutions for their welding, cutting and custom applications.



B U G - O S Y S T E M S

A DIVISION OF WELD TOOLING CORPORATION



280 TECHNOLOGY DRIVE CANONSBURG, PENNSYLVANIA 15317-9564 USA
PHONE: 412-331-1776 <http://www.bugo.com> FAX: 412-331-0383

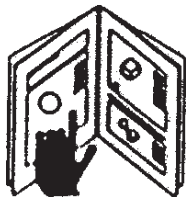
SAFETY

PROTECT YOURSELF AND OTHERS FROM SERIOUS INJURY OR DEATH. KEEP CHILDREN AWAY. BE SURE THAT ALL INSTALLATION, OPERATION, MAINTENANCE AND REPAIR PROCEDURES ARE PERFORMED ONLY BY QUALIFIED INDIVIDUALS.



ELECTRIC SHOCK can kill.

- 1) The equipment is not waterproof. Using the unit in a wet environment may result in serious injury. Do not touch equipment when wet or standing in a wet location.
- 2) The unused connectors have power on them. Always keep the unused connectors covered with the supplied protective panels. Operation of the machine without the protective panels may result in injury.
- 3) Never open the equipment without first unplugging the power cord or serious injury may result.
- 4) Verify the customer-supplied power connections are made in accordance with all applicable local and national electrical safety codes. If none exist, use International Electric Code (IEC) 950.
- 5) Never remove or bypass the equipment power cord ground. Verify the equipment is grounded in accordance with all applicable local and national electrical safety codes. If none exist, use International Electric Code (IEC) 950.



READ INSTRUCTIONS.

Read the instruction manual before installing and using the equipment.



EQUIPMENT DAMAGE POSSIBLE.

- 1) Do not plug in the power cord without first verifying the equipment is OFF and the cord input voltage is the same as required by the machine or serious damage may result.
- 2) Always verify both the pinion and wheels are fully engaged before applying power or equipment damage may occur.
- 3) Do not leave the equipment unattended.
- 4) Remove from the work site and store in a safe location when not in use.



FALLING EQUIPMENT can cause serious personal injury and equipment damage.

Faulty or careless user installation is possible. As a result, never stand or walk underneath equipment.



MOVING PARTS can cause serious injury.

- 1) Never try to stop the pinion from moving except by removing power or by using the STOP control.
- 2) Do not remove any protective panels, covers or guards and operate equipment.

HIGH FREQUENCY WARNINGS

SPECIAL PRECAUTIONS ARE REQUIRED WHEN USING PLASMA, TIG OR ANY WELDING PROCESS THAT USES HIGH FREQUENCY TO STRIKE AN ARC.



WARNING: HIGH FREQUENCY CAN EFFECT MACHINE OPERATION AND THEREFORE, WELD QUALITY.

Read the precautions below before installing and using the equipment.

PRECAUTIONS:

- 1) Some plasma or welding cables are strong sources of high frequency interference. NEVER lay a plasma or welding cable across the controls of the machine.
- 2) Always physically separate the plasma or welding cable leads from the machine cables. For example, the plasma or welding cable leads should NEVER be bundled with a pendant cable or the machine power cord. Maximize the separation between any machine cables and the plasma or welding cables.
- 3) Strictly follow the grounding procedures specified for the plasma or welding unit. NOTE: Some plasma and welding units produce exceptionally large amounts of high frequency noise. They may require a grounding rod be driven into the earth within six feet (2 meters) of the plasma or welding unit to become compatible with an automatic cutting or welding process.
- 4) If the high frequency is produced using a spark gap, adjust the points so the gap is as small as possible. The larger the gap, the higher the voltage and the higher the interference.
- 5) Some plasma or welding units will inject high frequency interference into the AC power line. Use separate power line branches whenever possible to power the plasma or welding source and the machine. Do not plug them into the same outlet box.
- 6) High frequency noise may enter the machine through the plasma or welding supply remote contactor leads. Some plasma and welding sources can produce noise spikes of up to several thousand volts. These sources are not compatible with automated cutting and welding equipment. It is recommended that the remote contactor leads on these plasma or welding sources not be connected to the machine. An alternate solution is to purchase a separate remote contactor isolation box.

Table of Contents

INTRODUCTION	6
FEATURES	6
VOLTAGE CODES.....	7
POWER RACK SYSTEM MODELS	7
DUAL MOTION POWER RACKER	7
HORIZONTAL POWER RACKER.....	7
VERTICAL POWER RACKER	7
POWER RACKER CONFIGURATIONS.....	8
(PRS-100X) DUAL MOTION POWER RACKER	8
PRS-1000 – Dual Motion Power Racker 120V	8
PRS-1002 – Dual Motion Power Racker 240V	8
(PRS-100X) DUAL MOTION POWER RACKER (CONT'D)	9
PRS-1004 – Dual Motion Power Racker 42V	9
(PRS-101X) HORIZONTAL POWER RACKER.....	9
PRS-1010 – Horizontal Power Racker 120V	9
(PRS-101X) HORIZONTAL POWER RACKER (CONT'D)	10
PRS-1012 – Horizontal Power Racker 240V	10
PRS-1014 – Horizontal Power Racker 42V.....	10
(PRS-102X) VERTICAL POWER RACKER	11
PRS-1020 – Vertical Power Racker 120 VAC	11
PRS-1022 – Vertical Power Racker 240 VAC	11
(PRS-102X) VERTICAL POWER RACKER (CONT'D)	12
PRS-1024 – Vertical Power Racker 42 VAC	12
(BUG-3320-8) H.D. TUBE RACK 8” / EXPLODED VIEW / PARTS LIST.....	13
(BUG-5182) RIGHT ANGLE CLAMP / EXPLODED VIEW / PARTS LIST	14
(BUG-5184) CLAMP BLOCK ASSEMBLY / PARTS LIST	15
(PRS-1060) CROSSED MOTOR BLOCK / EXPLODED VIEW / PARTS LIST	16
(PRS-1075) PENDANT CONTROL, DUAL MOTION / EXPLODED VIEW / PARTS LIST	17
(PRS-1075) DUAL MOTION PENDANT / WIRING DIAGRAM.....	18
(PRS-1066-XX) CABLE ASSEMBLY / PARTS LIST	18
(PRS-1180) DUAL MOTION CONTROL BOX – EXPLODED VIEW / PARTS LIST	20
(PRS-1180-WD) DUAL MOTION CONTROL BOX WIRING DIAGRAM.....	21
(PRS-1088) PRS CONTROL BOX MOUNT / PARTS LIST	22
(PRS-1050) MOTORIZED BLOCK / PARTS LIST	23
(PRS-1070) SINGLE MOTION PENDANT / EXPLODED VIEW / PARTS LIST	24
(PRS-1070-WD) SINGLE MOTION PENDANT / WIRING DIAGRAM	25
ACCESSORIES.....	25

(BUG-2708) CLAMP WITH ROD / EXPLODED VIEW / PARTS LIST	25
(BUG-5188) TORCH HOLDER ASSEMBLY / EXPLODED VIEW / PARTS LIST	26
(BUG-2975) CABLE MOUNTING ASSEMBLY / EXPLODED VIEW / PARTS LIST	27
(BUG-2975-2) DUAL CABLE ANCHOR ASSEMBLY / EXPLODED VIEW / PARTS LIST	28
(BUG-1540) CABLE ANCHOR ASSEMBLY / EXPLODED VIEW / PARTS LIST	29
(CWP-3355) HEAVY DUTY RACK 80:1 (NO MOUNTING BRACKET) EXPLODED VIEW / PARTS LIST	30
(CWO-1690-MH) LARGE MOTORIZED RACKER HORIZONTAL / EXPLODED VIEW / PARTS LIST	31
(CWO-1675-MV) MOTORIZED VERTICAL RACKER / EXPLODED VIEW / PARTS LIST	32
(CWO-3976) POWER RACKER CABLE / PARTS LIST	33
TROUBLESHOOT AND MAINTENANCE	34
WARRANTY.....	35

INTRODUCTION

The **Power Rack System** is compact and can be mounted on any BUG-O Carriage or fixture to let the user position the process tool using a handheld pendant. Three (3) types of kits are available for the **Power Rack System**, one (1) each for Horizontal, Vertical, and Dual Motion Control. They eliminate the need to lift of helmet or goggles to find a racking knob, which will reduce the risk of operators getting arc flash. The **Power Rack Drives** move 1-3/8" (35 mm) diameter steel tubing through the units and can be used with any of the components in the Bug-O Heavy Duty Tube Rack System.

FEATURES

The **Power Rack System** is operated from a pendant attached to a control box. The horizontal and vertical power rackers have a toggle switch. The **Dual Motion Power Racker** has a four-motion joystick. The Control Box for the **Power Rack System** mounts easily on a standard cable anchor assembly.

A: Plug connects to motorized block

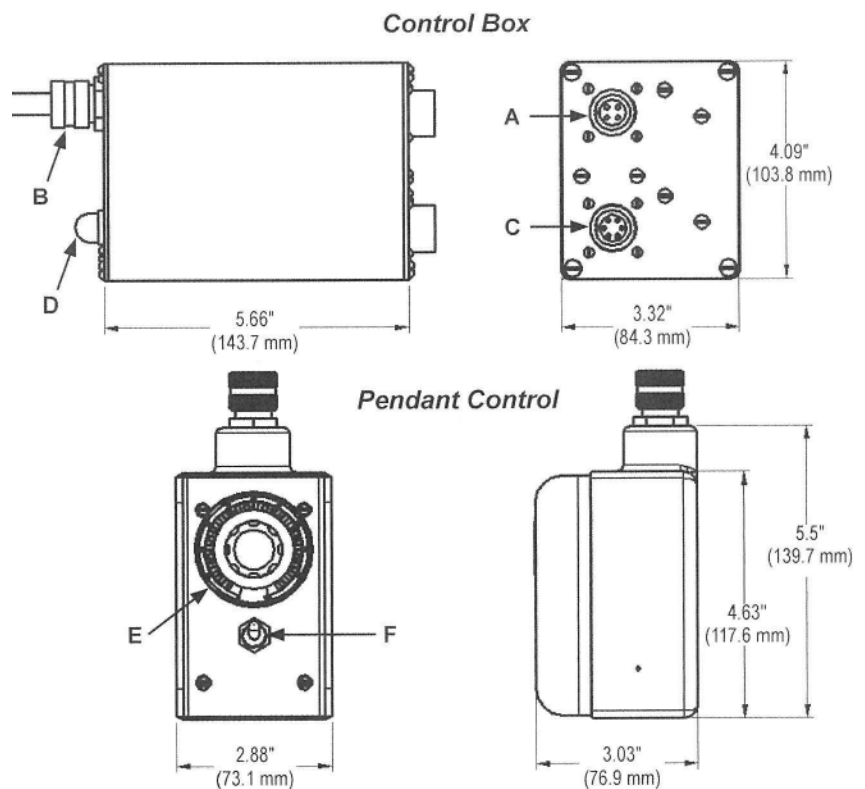
B: Cord Grip

C: Connector to Pendant Control

D: Circuit Breaker

E: Speed Control

F: Single Motion or Dual Motion



VOLTAGE CODES

PRS-XXX0	Indicates (120VAC / 50-60Hz / 1Ph)
PRS-XXX2	Indicates (240VAC / 50-60Hz / 1Ph)
PRS-XXX4	Indicates (42VAC / 50-60Hz / 1Ph)

Specify these identities when placing orders.

Power Racker Config.

Voltage Code

PRS-XXXX

POWER RACK SYSTEM MODELS

The **Power Rack System** comes in three (3) different models with three (3) different voltage configurations. The models are listed below:

DUAL MOTION POWER RACKER

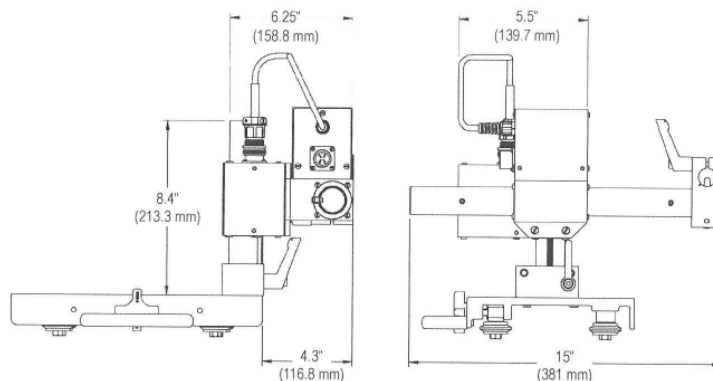
NET WT. 17 lbs. (7.7 kg)

SHIPPING WT. 20 lbs. (9.1 kg)

PRS-1000 Dual Motion Power Racker
120VAC / 50-60Hz / 1Ph

PRS-1002 Dual Motion Power Racker
240VAC / 50-60Hz / 1Ph

PRS-1004 Dual Motion Power Racker
42VAC / 50-60Hz / 1Ph



HORIZONTAL POWER RACKER

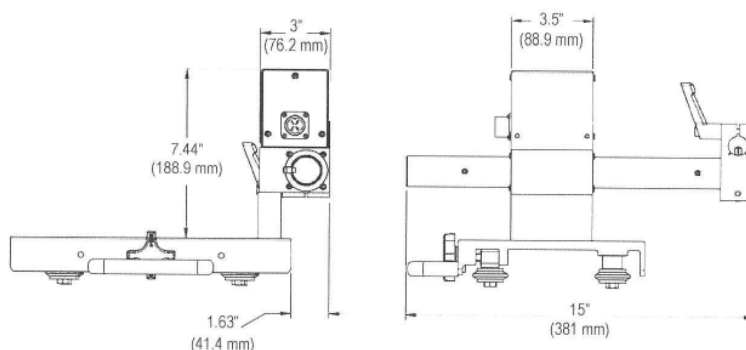
NET WT. 13 lbs. 5 oz. (6 kg)

SHIPPING WT. 16 lbs. (7.3 kg)

PRS-1010 Horizontal Power Racker
120VAC / 60Hz / 1Ph

PRS-1012 Horizontal Power Racker
240VAC / 60Hz / 1Ph

PRS-1014 Horizontal Power Racker
42VAC / 60Hz / 1Ph



VERTICAL POWER RACKER

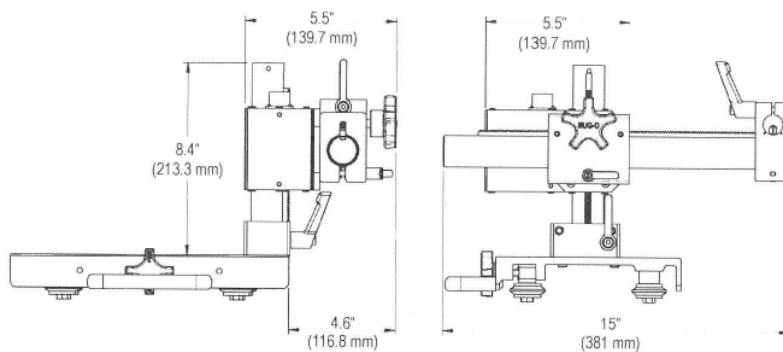
NET WT. 16 lbs. (7.3 kg)

SHIPPING WT. 19 lbs. (8.6 kg)

PRS-1020 Vertical Power Racker
120VAC / 60Hz / 1Ph

PRS-1022 Vertical Power Racker
240VAC / 60Hz / 1Ph

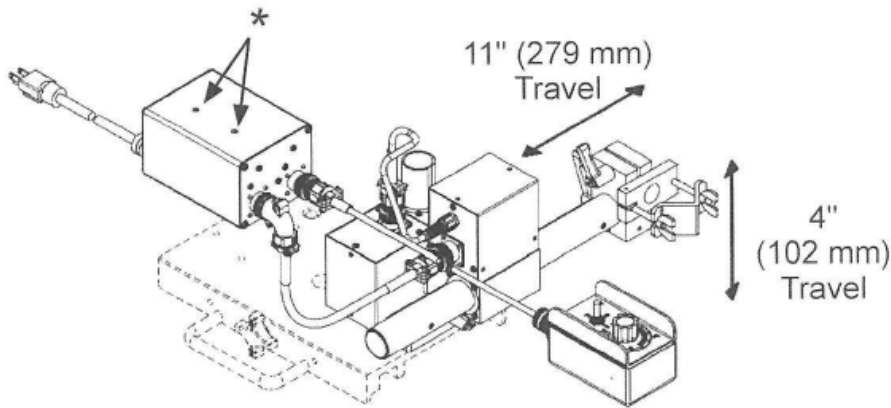
PRS-1024 Vertical Power Racker
42VAC / 60Hz / 1Ph



POWER RACKER CONFIGURATIONS

(PRS-100X) DUAL MOTION POWER RACKER

(*) Qty 2, 1/4-20 Mounting holes and bolts for mounting PRS-1100, PRS-1102, PRS-1104 (Provided)



PRS-1000 – Dual Motion Power Racker 120V

- 1 x **PRS-1000-COM** Dual Motion Power Racker Common Group
- Includes:
- 1 x **BUG-3320-15** H.D. Tube Rack 15" (381 mm)
 - 1 x **BUG-3320-8** H.D. Tube Rack 8" (203 mm)
 - 1 x **BUG-5182** Right Angle Clamp
 - 1 x **BUG-5184** Tube Clamp Assembly
- 1 x **PRS-1090** Power Rack Drive 120 VAC
- Includes:
- 1 x **PRS-1060** Crossed Motorized Block
 - 1 x **PRS-1066** Cable Assembly
 - 1 x **PRS-1075** Pendant Control, Dual Motion
 - 1 x **PRS-1100** Control Box 120 VAC
 - 1 x **PRS-1088** Mounting Bracket & Plate (Not Shown)

PRS-1002 – Dual Motion Power Racker 240V

- 1 x **PRS-1000-COM** Dual Motion Power Racker Common Group
- Includes:
- 1 x **BUG-3320-15** H.D. Tube Rack 15" (381 mm)
 - 1 x **BUG-3320-8** H.D. Tube Rack 8" (203 mm)
 - 1 x **BUG-5182** Right Angle Clamp
 - 1 x **BUG-5184** Tube Clamp Assembly
- 1 x **PRS-1092** Power Rack Drive 240 VAC
- Includes:
- 1 x **PRS-1060** Crossed Motorized Block
 - 1 x **PRS-1066** Cable Assembly
 - 1 x **PRS-1075** Pendant Control, Dual Motion
 - 1 x **PRS-1102** Control Box 240 VAC
 - 1 x **PRS-1088** Mounting Bracket & Plate (Not Shown)

(PRS-100X) DUAL MOTION POWER RACKER (CONT'D)

PRS-1004 – Dual Motion Power Racker 42V

1 x **PRS-1000-COM** Dual Motion Power Racker Common Group

Includes:

1 x BUG-3320-15	H.D. Tube Rack 15" (381 mm)
1 x BUG-3320-8	H.D. Tube Rack 8" (203 mm)
1 x BUG-5182	Right Angle Clamp
1 x BUG-5184	Tube Clamp Assembly

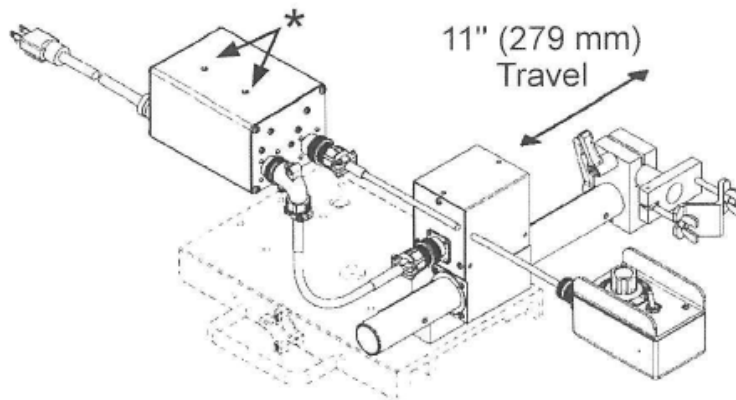
1 x **PRS-1094** Power Rack Drive 42 VAC

Includes:

1 x PRS-1060	Crossed Motorized Block
1 x PRS-1066	Cable Assembly
1 x PRS-1075	Pendant Control, Dual Motion
1 x PRS-1104	Control Box 42 VAC
1 x PRS-1088	Mounting Bracket & Plate (Not Shown)

(PRS-101X) HORIZONTAL POWER RACKER

(*) Qty 2, 1/4-20 Mounting holes and bolts for mounting PRS-1180, PRS-1182, PRS-1184 (Provided)



PRS-1010 – Horizontal Power Racker 120V

1 x **PRS-1010-COM** Horizontal Power Racker Common Group

Includes:

1 x BUG-3320-15	H.D. Tube Rack 15" (381mm)
1 x BUG-5182	Right Angle Clamp
1 x PAN-1164	Spacer Block

1 x **PRS-1080** Power Rack Drive 120 VAC

Includes:

1 x PRS-1050	Motorized Block
1 x PRS-1066	Cable Assembly
1 x PRS-1070	Pendant Control, Single Motion
1 x PRS-1180	Control Box 120 VAC
1 x PRS-1088	Mounting Bracket & Plate (Not Shown)

(PRS-101X) HORIZONTAL POWER RACKER (CONT'D)

PRS-1012 – Horizontal Power Racker 240V

1 x PRS-1010-COM

Includes:

- 1 x **BUG-3320-15**
- 1 x **BUG-5182**
- 1 x **PAN-1164**

Horizontal Power Racker Common Group

H.D. Tube Rack 15" (381mm)
Right Angle Clamp
Spacer Block

1 x PRS-1082

Includes:

- 1 x **PRS-1050**
- 1 x **PRS-1066**
- 1 x **PRS-1070**
- 1 x **PRS-1182**
- 1 x **PRS-1088**

Power Rack Drive 240 VAC

Motorized Block
Cable Assembly
Pendant Control, Single Motion
Control Box 240 VAC
Mounting Bracket & Plate (Not Shown)

PRS-1014 – Horizontal Power Racker 42V

1 x PRS-1010-COM

Includes:

- 1 x **BUG-3320-15**
- 1 x **BUG-5182**
- 1 x **PAN-1164**

Horizontal Power Racker Common Group

H.D. Tube Rack 15" (381mm)
Right Angle Clamp
Spacer Block

1 x PRS-1084

Includes:

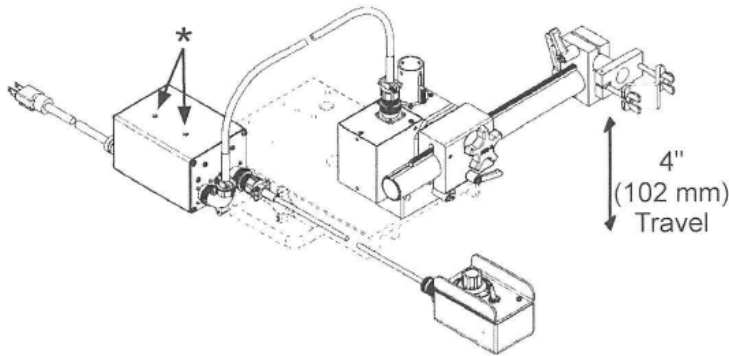
- 1 x **PRS-1050**
- 1 x **PRS-1066**
- 1 x **PRS-1070**
- 1 x **PRS-1184**
- 1 x **PRS-1088**

Power Rack Drive 42 VAC

Motorized Block
Cable Assembly
Pendant Control, Single Motion
Control Box 42 VAC
Mounting Bracket & Plate (Not Shown)

(PRS-102X) VERTICAL POWER RACKER

(*) Qty 2, 1/4-20 Mounting holes and bolts for mounting PRS-1180, PRS-1182, PRS-1184 (Provided)



PRS-1020 – Vertical Power Racker 120 VAC

1 x PRS-1020-COM

Includes:

- 1 x BUG-3320-15
- 1 x BUG-3320-8
- 1 x BUG-5182
- 1 x BUG-5184
- 1 x PRS-1028
- 1 x PRS-1045

Vertical Power Racker Common Group

- H.D. Tube Rack 15" (381 mm)
- H.D. Tube Rack 8" (203 mm)
- Right Angle Clamp
- Tube Clamp Assembly
- Clamp Block
- Mounting Plate

1 x PRS-1080

Includes:

- 1 x PRS-1050
- 1 x PRS-1066
- 1 x PRS-1070
- 1 x PRS-1180
- 1 x PRS-1088

Power Rack Drive 120 VAC

- Motorized Block
- Cable Assembly
- Pendant Control, Single Motion
- Control Box 120 VAC
- Mounting Bracket & Plate (Not Shown)

PRS-1022 – Vertical Power Racker 240 VAC

1 x PRS-1020-COM

Includes:

- 1 x BUG-3320-15
- 1 x BUG-3320-8
- 1 x BUG-5182
- 1 x BUG-5184
- 1 x PRS-1028
- 1 x PRS-1045

Vertical Power Racker Common Group

- H.D. Tube Rack 15" (381 mm)
- H.D. Tube Rack 8" (203 mm)
- Right Angle Clamp
- Tube Clamp Assembly
- Clamp Plate
- Mounting Plate

1 x PRS-1082

Includes:

- 1 x PRS-1050
- 1 x PRS-1066
- 1 x PRS-1070
- 1 x PRS-1182
- 1 x PRS-1088

Power Rack Drive 240 VAC

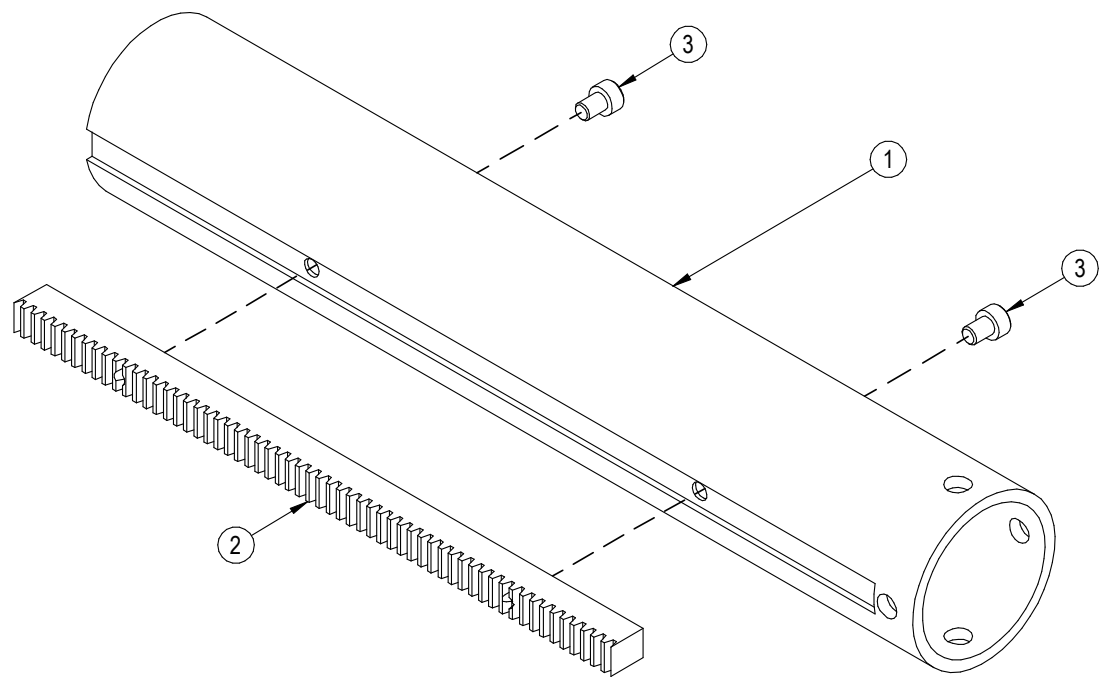
- Motorized Block
- Cable Assembly
- Pendant Control, Single Motion
- Control Box 240 VAC
- Mounting Bracket & Plate (Not Shown)

(PRS-102X) VERTICAL POWER RACKER (CONT'D)

PRS-1024 – Vertical Power Racker 42 VAC

1 x PRS-1020-COM	Vertical Power Racker Common Group
Includes:	
1 x BUG-3320-15	H.D. Tube Rack 15" (381 mm)
1 x BUG-3320-8	H.D. Tube Rack 8" (203 mm)
1 x BUG-5182	Right Angle Clamp
1 x BUG-5184	Tube Clamp Assembly
1 x PRS-1028	Clamp Plate
1 x PRS-1045	Mounting Plate
1 x PRS-1084	Power Rack Drive 42 VAC
Includes:	
1 x PRS-1050	Motorized Block
1 x PRS-1066	Cable Assembly
1 x PRS-1070	Pendant Control, Single Motion
1 x PRS-1184	Control Box 42 VAC
1 x PRS-1088	Mounting Bracket & Plate (Not Shown)

(BUG-3320-8) H.D. TUBE RACK 8" / EXPLODED VIEW / PARTS LIST



PARTS LIST

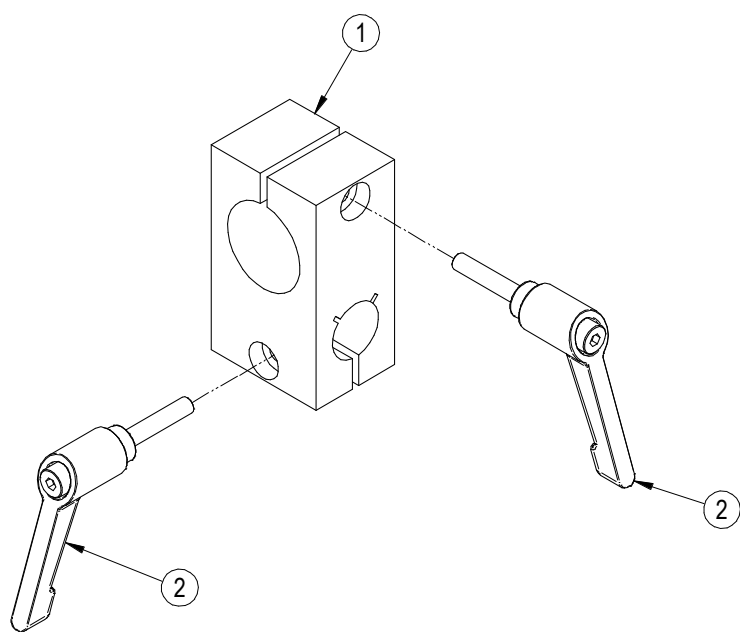
ITEM	PART #	DESCRIPTION	QTY
1	BUG-5156	TUBE 8"	1
2	BUG-5158	RACK	1
3	FAS-0511	SOC HD CAO SCR 6-32 X 3/16"	2

For further information on the lengths of H.D. tube racks that are available, as well as the other components in the H.D. tube system, please refer to our Heavy Duty Rack System Brochure# LIT-HDTPS-BRO.

*Not Shown:

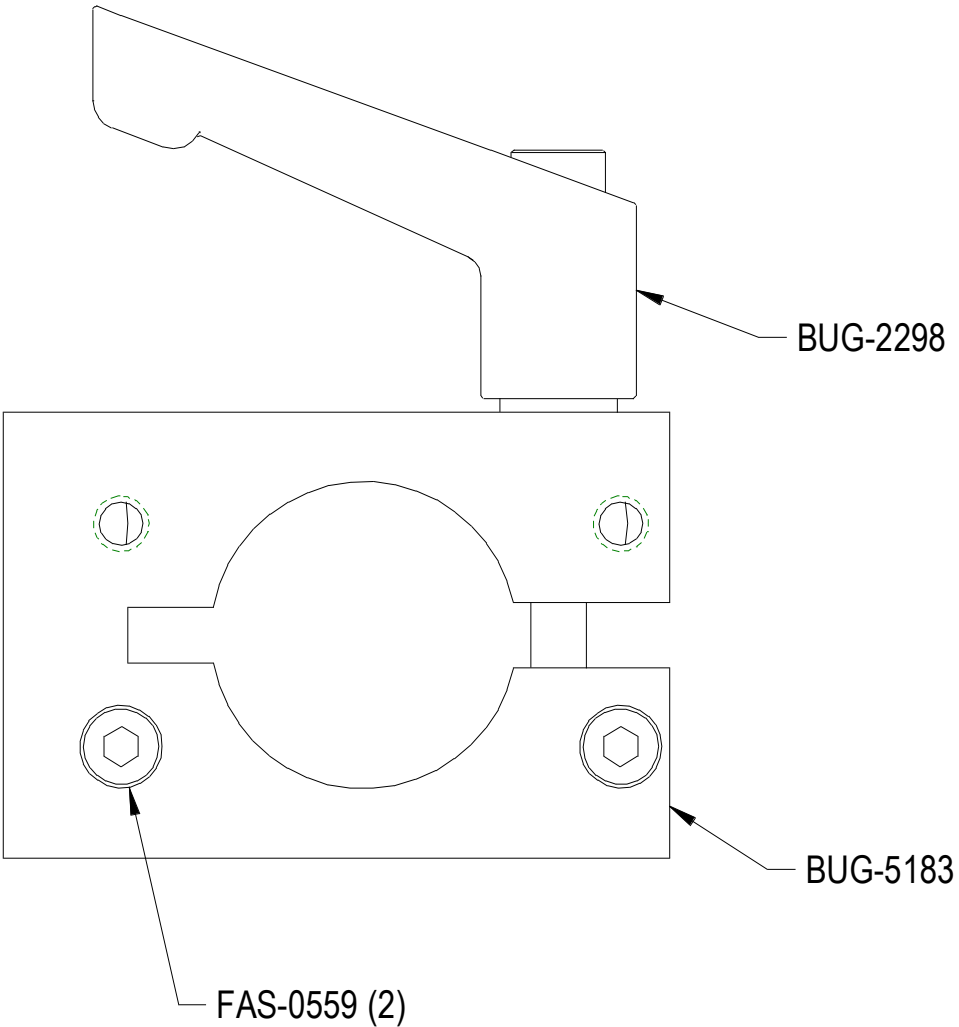
- *BUG-3320-12 (12" Long)
- *BUG-3320-15 (15" Long)
- *BUG-3320-24 (24" Long)
- *BUG-3320-30 (30" Long)
- *BUG-3320-44 (44" Long)
- *BUG-3320-96 (96" Long)

(BUG-5182) RIGHT ANGLE CLAMP / EXPLODED VIEW / PARTS LIST



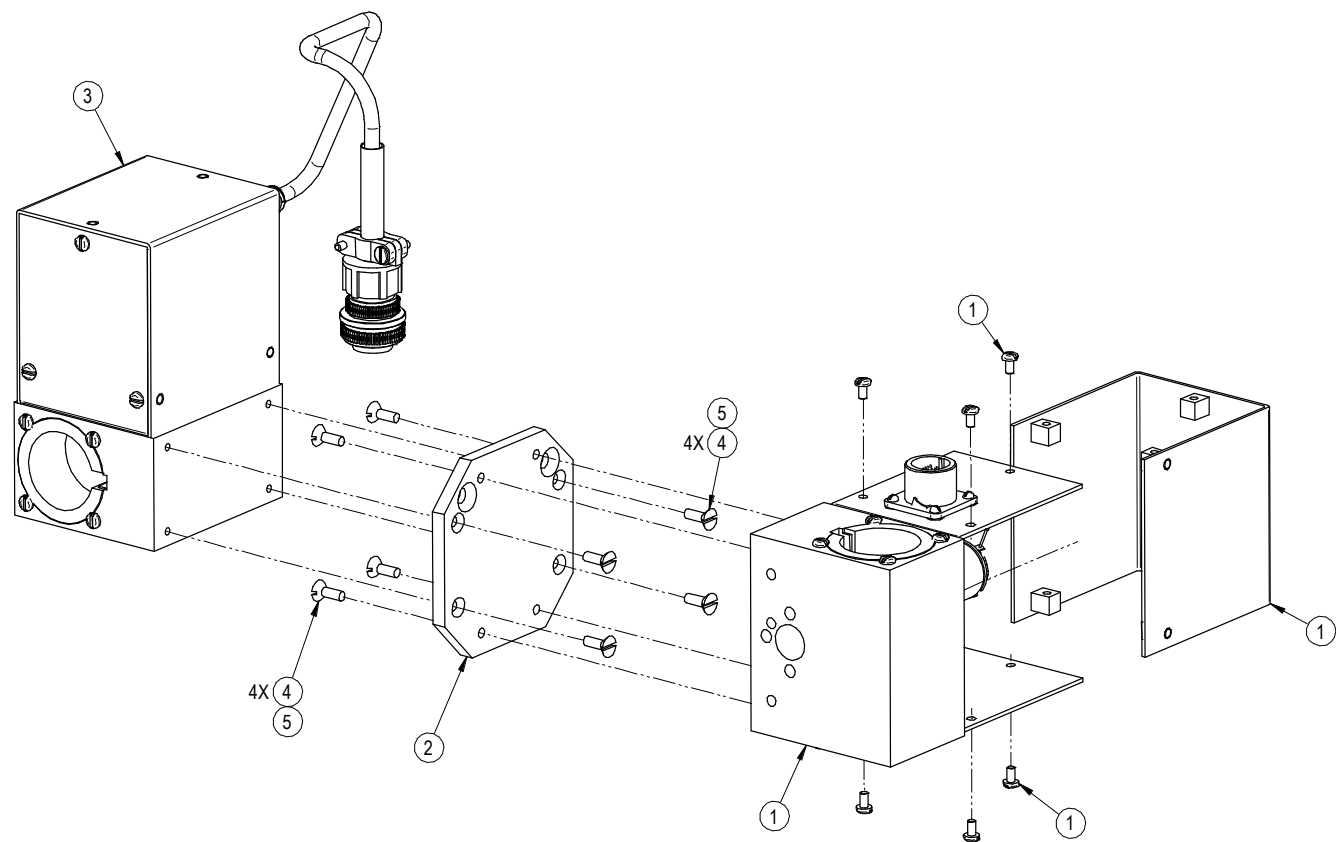
PARTS LIST			
ITEM	PART #	DESCRIPTION	QTY
1	BUG-5181	RIGHT ANGLE CLAMP BLOCK	1
2	BUG-2298	H D ADJUSTABLE CLAMPING LEVER	2

(BUG-5184) CLAMP BLOCK ASSEMBLY / PARTS LIST



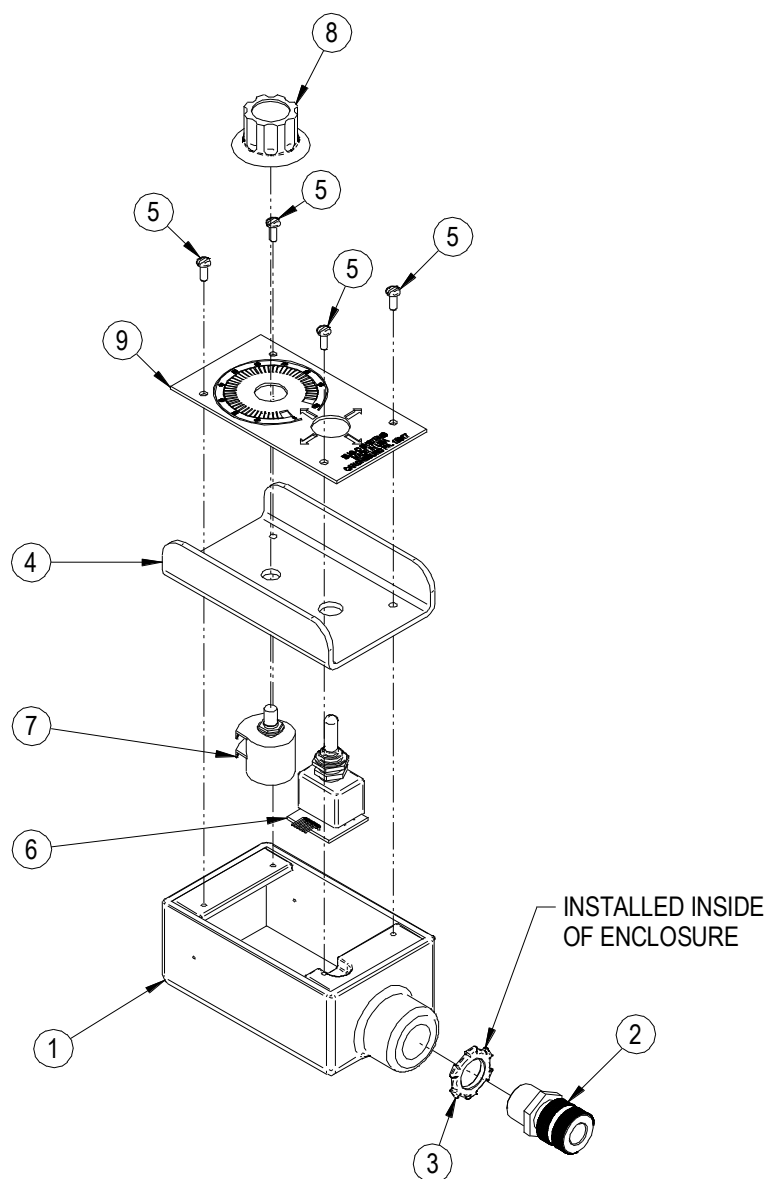
(PRS-1060) CROSSED MOTOR BLOCK / EXPLODED VIEW / PARTS LIST

(INCLUDED WITH PRS-1090, PRS-1092, PRS-1094)



PARTS LIST			
ITEM	PART #	DESCRIPTION	QTY
1	PRS-1050	MOTORIZED BLOCK	1
2	PRS-1045	MOUNTING PLATE	1
3	PRS-1055	MOTORIZED BLOCK, EXTRA OUTPUT	1
4	FAS-0825	FLT HD SLT SCR 8-32 X 1/2	8
5*	N/A	LOCTITE® 222MS™ THREADLOCKER, OR SIMILAR	AS REQUIRED

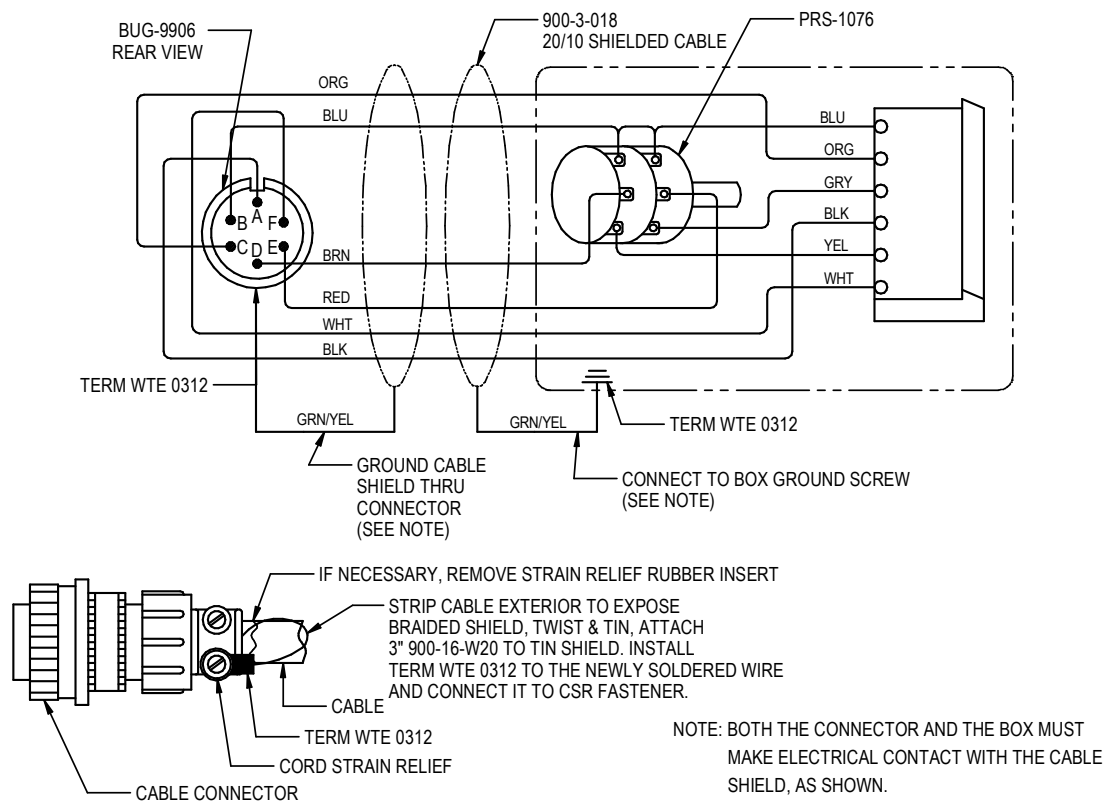
(PRS-1075) PENDANT CONTROL, DUAL MOTION / EXPLODED VIEW / PARTS LIST



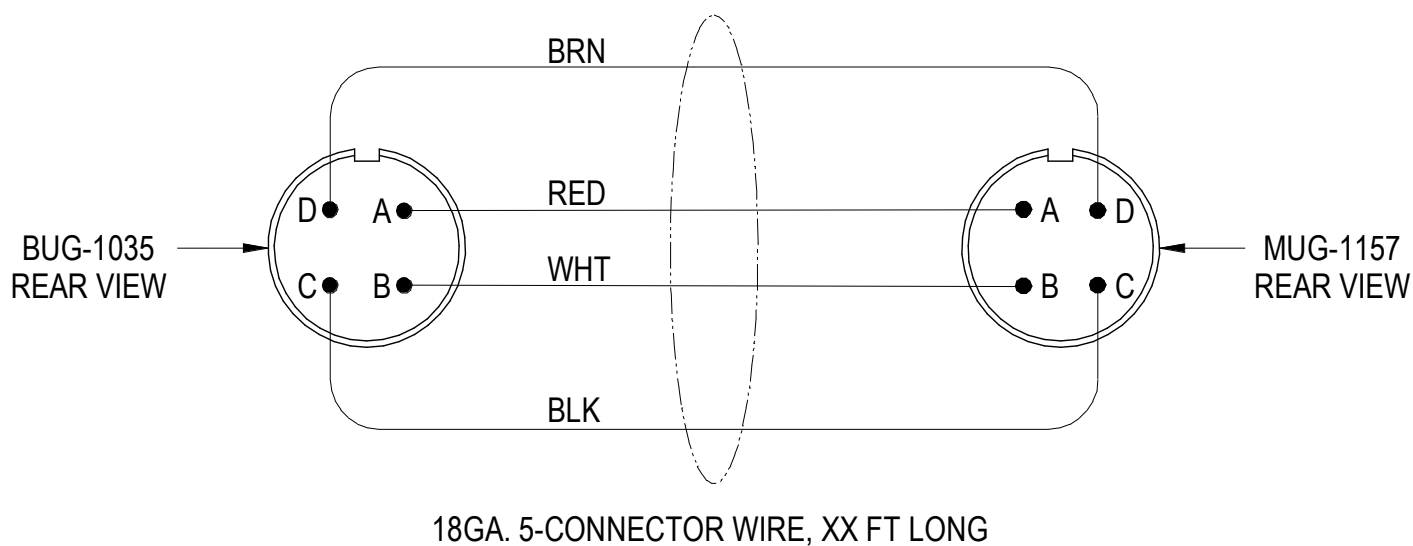
PARTS LIST			
ITEM	PART #	DESCRIPTION	QTY
1	MUG-1169	BOX WITHOUT COVER	1
2	BUG-9217	CORD GRIP	1
3	FAS-3151	LN101 CORD GRIP NUT	1
4	BUG-1631	LID FOR PENDANT CONTROLS	1
5	FAS-0114	PAN HD SCR 6-32 X 3/8 BLACK	4
6	PRS-1065	JOYSTICK	1
7	PRS-1076	DUAL POT, 10K	1
8	BUG-9687	KNOB, FLUTED PHENOLIC W/SKIRT	1
9	PLT-1342	LEGENDPLATE FOR PRS-1075	1

NOTE: WIRES AND CABLES NOT SHOWN

(PRS-1075) DUAL MOTION PENDANT / WIRING DIAGRAM



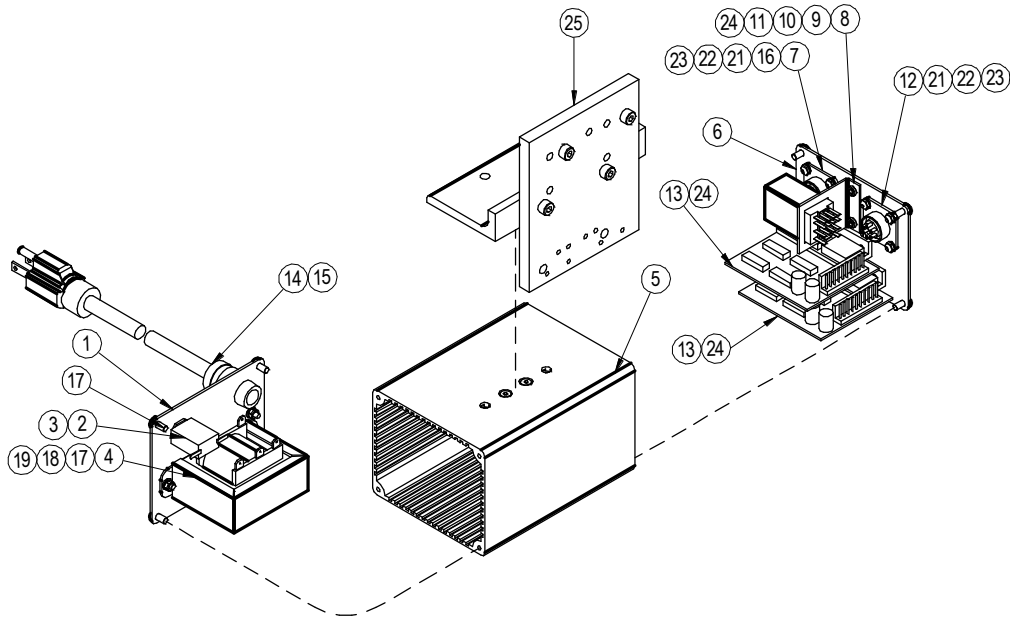
(PRS-1066-XX) CABLE ASSEMBLY / PARTS LIST



(PRS-1100) DUAL MOTION CONTROL BOX – EXPLODED VIEW / PARTS LIST

(PRS-1102 = 240VAC)

(PRS-1104 = 42VAC)

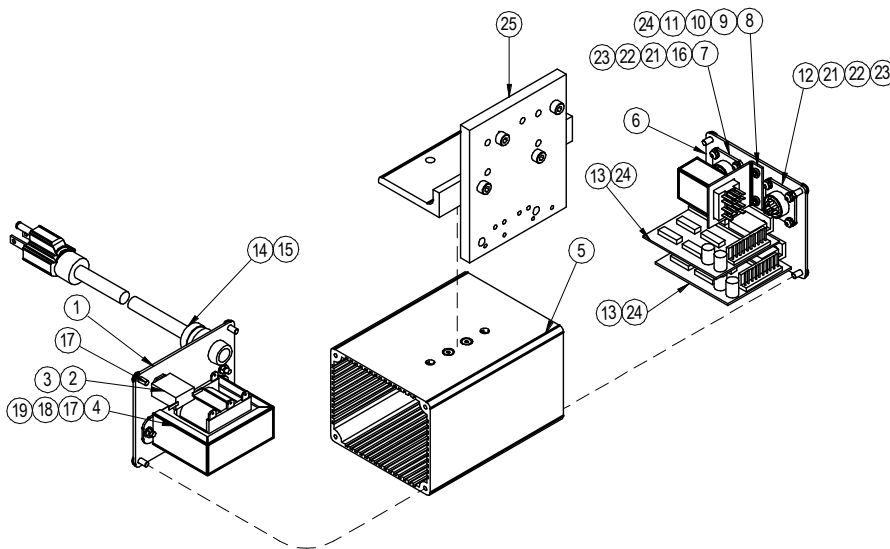


BILL OF MATERIALS					
ITEM	Component Item	Description	120VAC	240VAC	42VAC
1	PRS-1111	INPUT END PANEL		1	
	BUG-2923	.7 AMP CIRCUIT BREAKER	1		
2	BUG-2952	.5 AMP CIRCUIT BREAKER		1	
	BUG-2933	2 AMP CIRCUIT BREAKER			1
3	BUG-2924	RESET SEAL, TRANSPARENT		1	
	BUG-5001	TRANSFORMER 115VAC	1		
4	BUG-5002	TRANSFORMER 240VAC		1	
	BUG-5003	TRANSFORMER 42VAC			1
5	PRS-1110	ENCLOSURE		1	
6	PRS-1112	OUTPUT END PANEL		1	
7	MUG-1156	PANEL CONNECTOR, 4-T, F		1	
8	BUG-1404	RELAY BRACKET		1	
9	BUG-1411	HOLD DOWN SPRING		1	
10	BUG-1384	RELAY SOCKET & SPRING		1	
	BUG-1383	RELAY, 4PDT, 3A 120V, PLUG IN	1		
11	BUG-1551	RELAY 3A, 240VAC		1	
	BUG-9636	RELAY 48VAC			1
12	BUG-9902	PANEL CONNECTOR, 6-T, F		1	
13	CAS-1770-002	SPEED CONTROL		2	
14	BUG-9446	CORD GRIP		1	
15	BUG-9445	POWER CORD (120VAC SHOWN)	1		1
	GOF-3115	LINE CORD 240VAC		1	
16	BUG-9628	CAP & CHAIN ASSY		1	
17	FAS-0124	8/32 X 3/8 PAN HD, DI-CHROME		10	
18	FAS-1320	HEX NUT 8-32		3	
19	WAS-0221	#8 INTERNAL STAR LOCKWASHER		3	
20	SCW WTE 0514	#8-32 X 3/8" PAN HEAD, ZINC		1	
21	FAS-0204	RND HD SLT SCR 4-40 X 3/8 ZINC		8	
22	FAS-1305	HEX NUT 4-40		8	
23	WAS-0201	#4 INTERNAL STAR LOCKWASHER		8	
24	FAS-0112	PAN HD SLT 6-32 X 1/4 BLACK		6	
25	PRS-1088	PRS ENCLOSURE MOUNT		1	
N/S	SFX-1292	BUMPER, CYLINDRICAL .14 X .50		4	

LIST

(PRS-1182 = 240VAC)

(PRS-1184 = 42VAC)



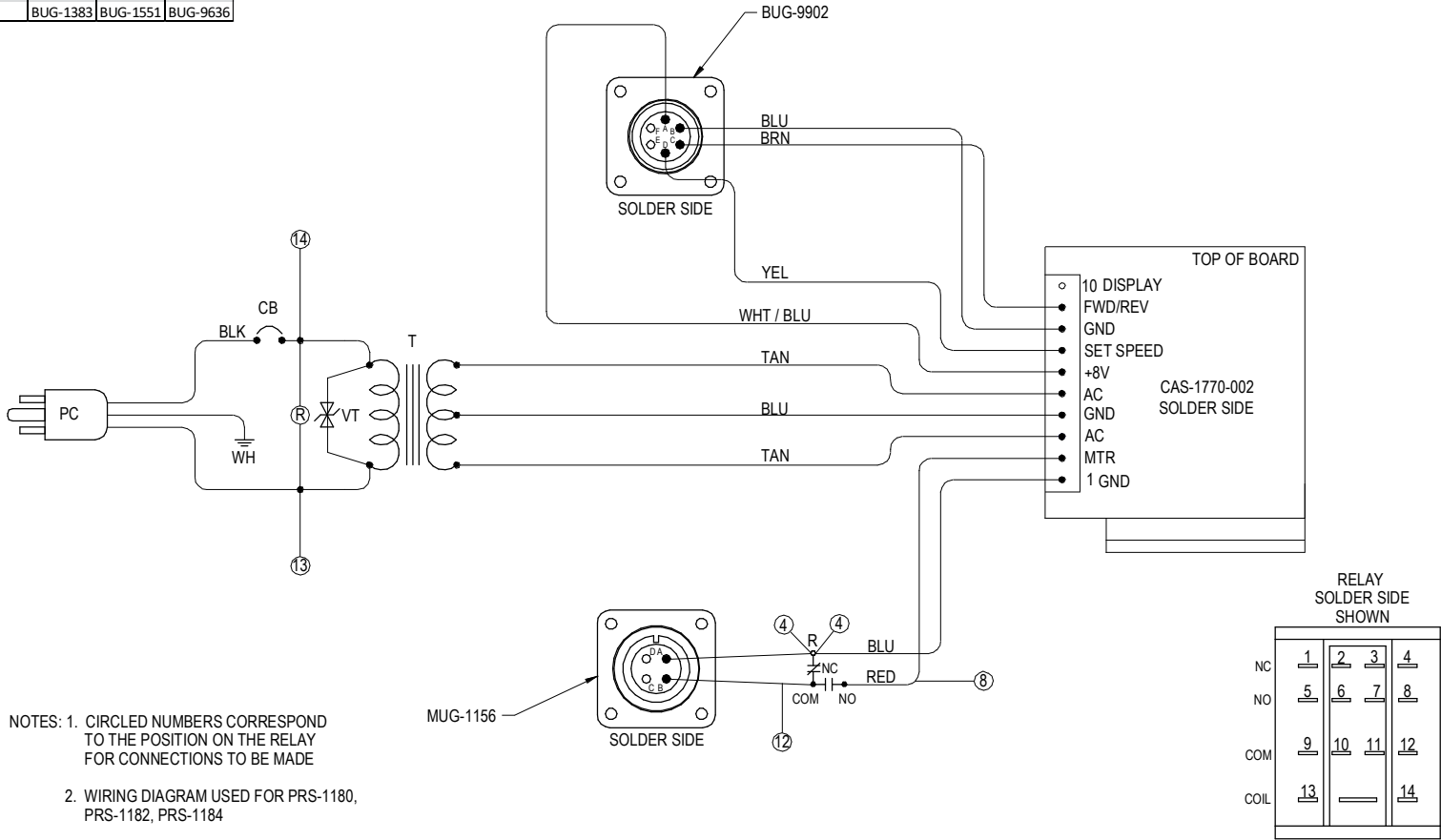
BILL OF MATERIALS						
ITEM	Component Item	Description	120VAC	240VAC	42VAC	
1	PRS-1111	INPUT END PANEL		1		
2	BUG-2923	.7 AMP CIRCUIT BREAKER	1			
	BUG-2952	.5 AMP CIRCUIT BREAKER		1		
	BUG-2933	2 AMP CIRCUIT BREAKER			1	
3	BUG-2924	RESET SEAL, TRANSPARENT		1		
4	BUG-5001	TRANSFORMER 115VAC	1			
	BUG-5002	TRANSFORMER 240VAC		1		
	BUG-5003	TRANSFORMER 42VAC			1	
5	PRS-1110	ENCLOSURE		1		
6	PRS-1112	OUTPUT END PANEL		1		
7	MUG-1156	PANEL CONNECTOR, 4-T, F		1		
8	BUG-1404	RELAY BRACKET		1		
9	BUG-1411	HOLD DOWN SPRING		1		
10	BUG-1384	RELAY SOCKET & SPRING		1		
11	BUG-1383	RELAY, 4PDT, 3A 120V, PLUG IN	1			
	BUG-1551	RELAY 3A, 240VAC		1		
	BUG-9636	RELAY 48VAC			1	
12	BUG-9902	PANEL CONNECTOR, 6-T, F		1		
13	CAS-1770-002	SPEED CONTROL		2		
14	BUG-9446	CORD GRIP		1		
15	BUG-9445	POWER CORD (120VAC SHOWN)	1			1
	GOF-3115	LINE CORD 240VAC		1		
16	BUG-9628	CAP & CHAIN ASSY		1		
17	FAS-0124	8/32 X 3/8 PAN HD, DI-CHROME		10		
18	FAS-1320	HEX NUT 8-32		3		
19	WAS-0221	#8 INTERNAL STAR LOCKWASHER		3		
20	SCW WTE 0514	#8-32 X 3/8" PAN HEAD, ZINC		1		
21	FAS-0204	RND HD SLT SCR 4-40 X 3/8 ZINC		8		
22	FAS-1305	HEX NUT 4-40		8		
23	WAS-0201	#4 INTERNAL STAR LOCKWASHER		8		
24	FAS-0112	PAN HD SLT 6-32 X 1/4 BLACK		6		
25	PRS-1088	PRS ENCLOSURE MOUNT		1		
N/S	SFX-1292	BUMPER, CYLINDRICAL, .14 X .50		4		
N/S	BUG-2005	LABEL, BUG-O SYSTEMS		1		
N/S	BUG-1393	VOLT TRAP 120VAC	1			1
	BUG-1563	VOLT TRAP 240VAC		1		
N/S	BUG-9234	LABEL, 120V		1		
N/S	BUG-9233	LABEL, 240V		1		
N/S	BUG-9492	LABEL, 42V		1		
N/S	CNN-0220	TERMINAL 3 SIDED 18-20 AWG.	8	8		8
N/S	CNN-022A-P	10 POS. HOUSING, .156" CENTER	1	1		1
N/S	SRK WTE 0947	SHRINK TUBE, 1/4" BLACK	2	2		2
N/S	TERM WTE 0312	#8 RING BLUE	1	1		1
N/S	TERM -5622	CONN. .187" FEM INSL 14-16 AWG	5	5		5
N/S	BUG-9593	240V TWIST-LOCK PLUG		1		
N/S	BUG-9594	240V CONNECTOR BODY		1		
N/S	BUG-2847	15A 125V RECEPTACLE, YELLOW				1

(PRS-1180-WD) DUAL MOTION CONTROL BOX WIRING DIAGRAM

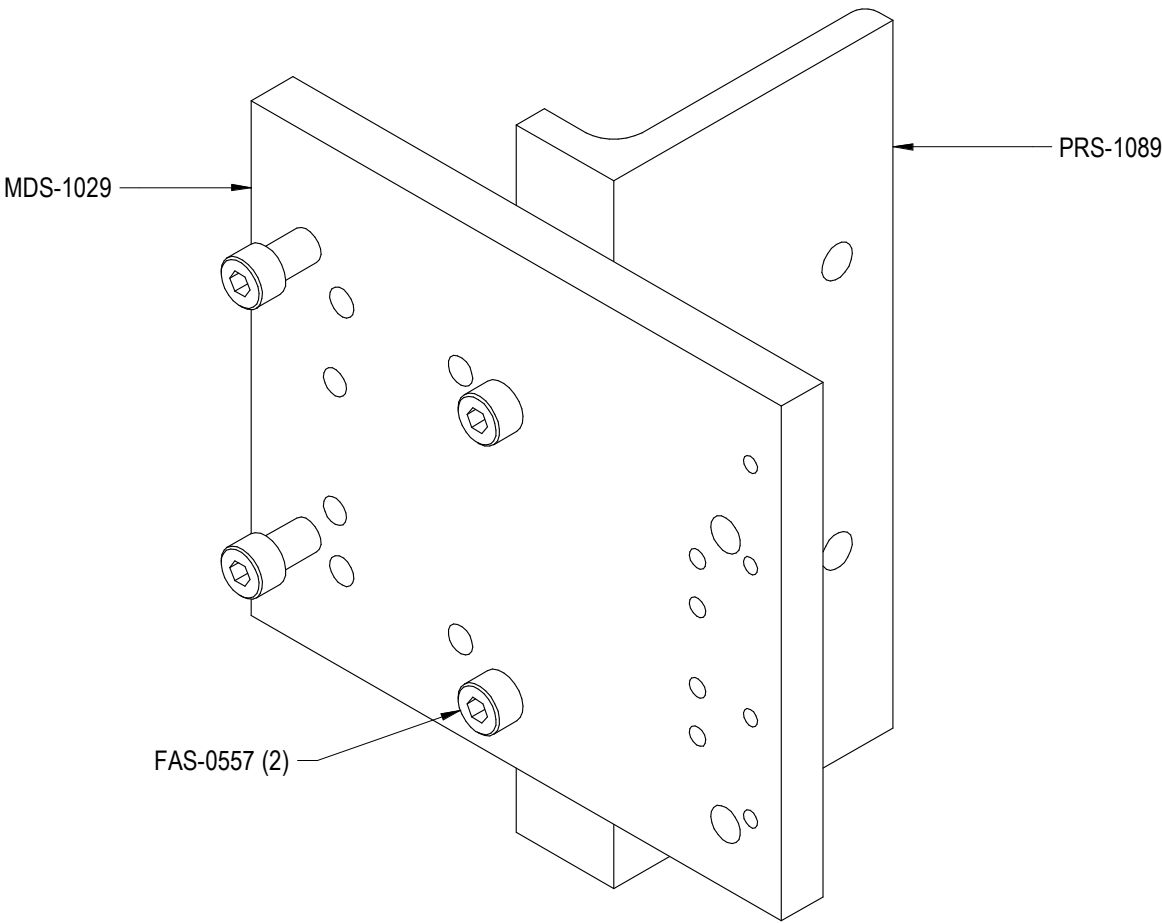
(PRS-1182 = 240VAC)

(PRS-1184 = 42VAC)

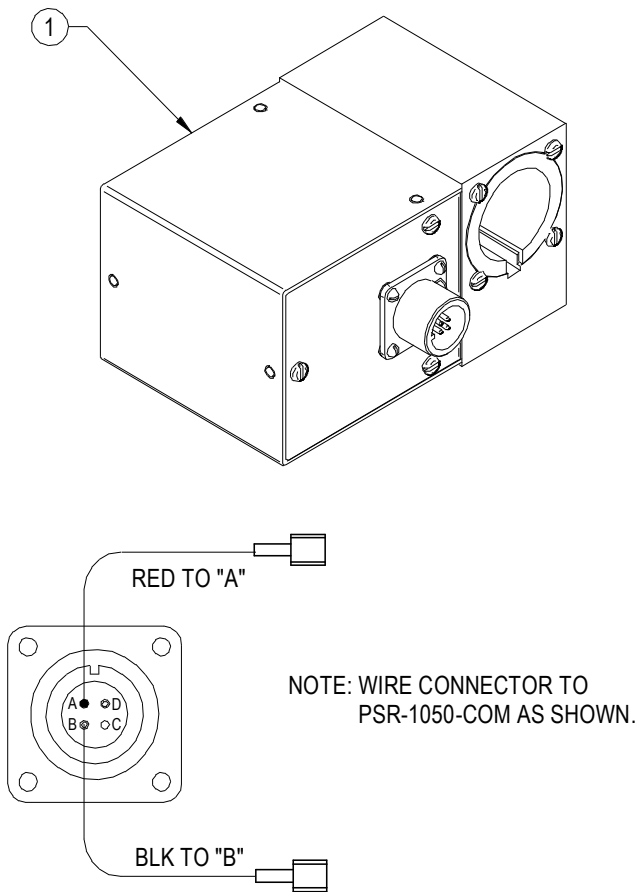
ITEM	DESCRIPTION	PRS-1081 120 VAC PART NO	PRS-1083 240 VAC PART NO	PRS-1085 42 VAC PART NO
T	TRANSFORMER	BUG-5001	BUG-5002	BUG-5003
CB	CIRCUIT BREAKER	BUG-2923	BUG-2952	BUG-2933
VT	VOLT TRAP	BUG-1393	BUG-1563	BUG-1393
PC	POWER CORD	BUG-9445	GOF-3115	BUG-9442
R	RELAY	BUG-1383	BUG-1551	BUG-9636



(PRS-1088) PRS CONTROL BOX MOUNT / PARTS LIST

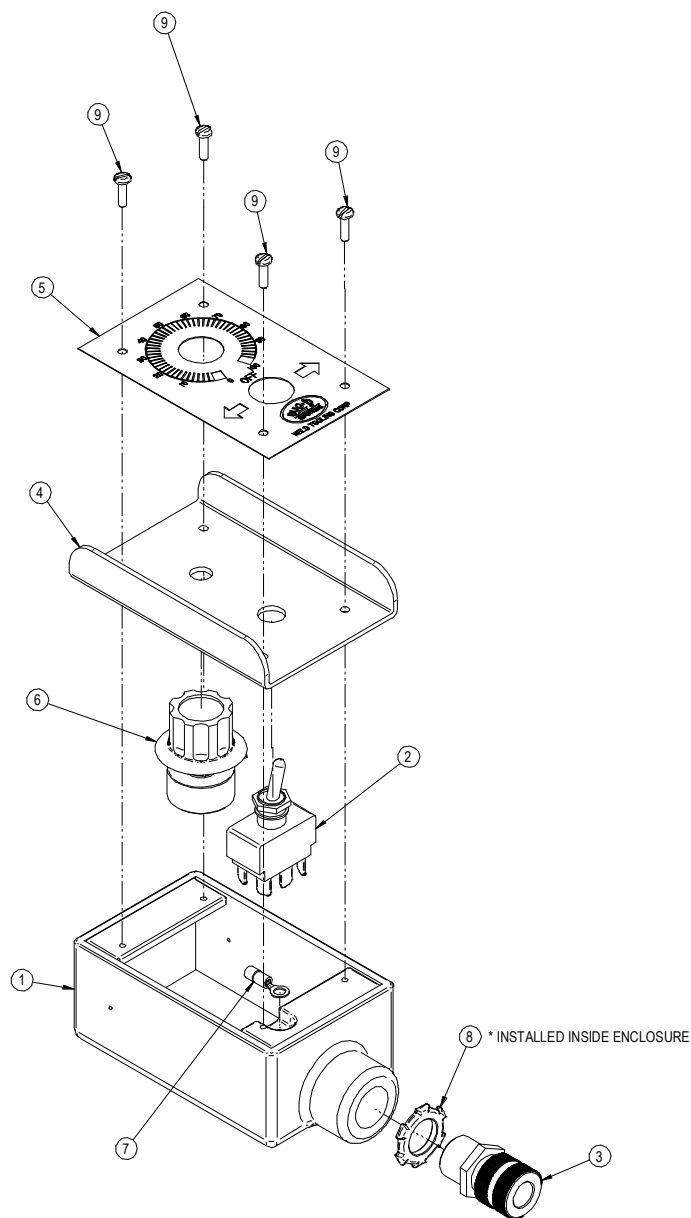


(PRS-1050) MOTORIZED BLOCK / PARTS LIST
(INLCUDED WITH PRS-1080, PRS-1082, PRS-1084)



PARTS LIST			
ITEM	PART#	DESCRIPTION	QTY
1	PRS-1050-COM	MOTORIZED BLOCK COM	1

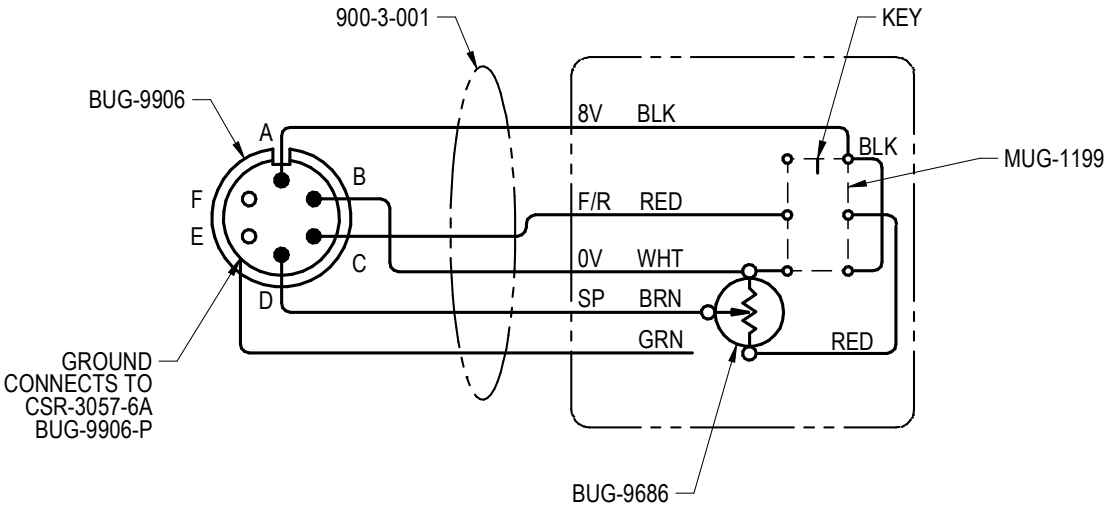
(PRS-1070) SINGLE MOTION PENDANT / EXPLODED VIEW / PARTS LIST
(INCLUDED WITH PRS-1080, PRS-1082, PRS-1084)



PARTS LIST			
ITEM	PART #	DESCRIPTION	QTY
1	MUG-1169	BOX WITHOUT COVER	1
2	MUG-1199	TOGGLE SWITCH	1
3	BUG-9217	CORD GRIP	1
4	BUG-1631	LID FOR PENDANT CONTROLS	1
5	PLT-1341	ENGRAVED PENDANT PLATE	1
6	BUG-9686	POTENTIOMETER CONTROL	1
7	TERM WTE 0312	#8 RING BLUE	1
8	FAS-3151	LN101 CORD GRIP NUT	1
9	FAS-0115	6-32 X 1/2 PAN HEAD, ZINC	4

* NOT SHOWN:
QTY 132" - 900-3-001 - 18/5 CHROME PVC, UNSHIELDED
QTY 1 - BUG-1435 - STA-KON B-14-10
QTY 1 - BUG-9906 - CABLE CONNECTOR, 6-T, M
QTY 1 - MUG-1169-A - GASKET

(PRS-1070-WD) SINGLE MOTION PENDANT / WIRING DIAGRAM



ACCESSORIES

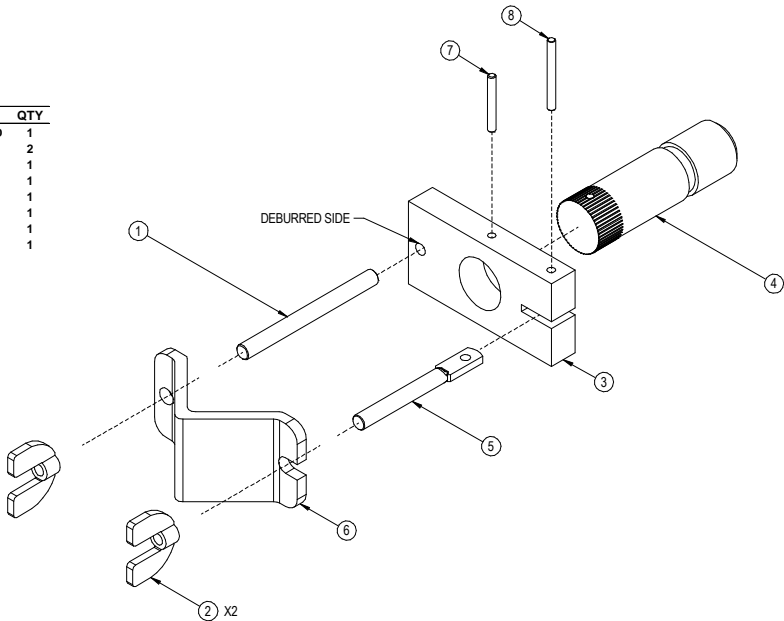
The **Power Rack System** can be used for both cutting and welding applications. Specify BUG-2708 Clamp with Rod for welding, or BUG-5188 Torchholder Assembly for cutting (not included in Power Rack Kits).

(BUG-2708) CLAMP WITH ROD / EXPLODED VIEW / PARTS LIST

Also available with different sized rods:

- *Not Shown:
- *BUG-2708-1.5 (w/ 1.5" rod)
- *BUG-2708-2 (w/ 2" rod)

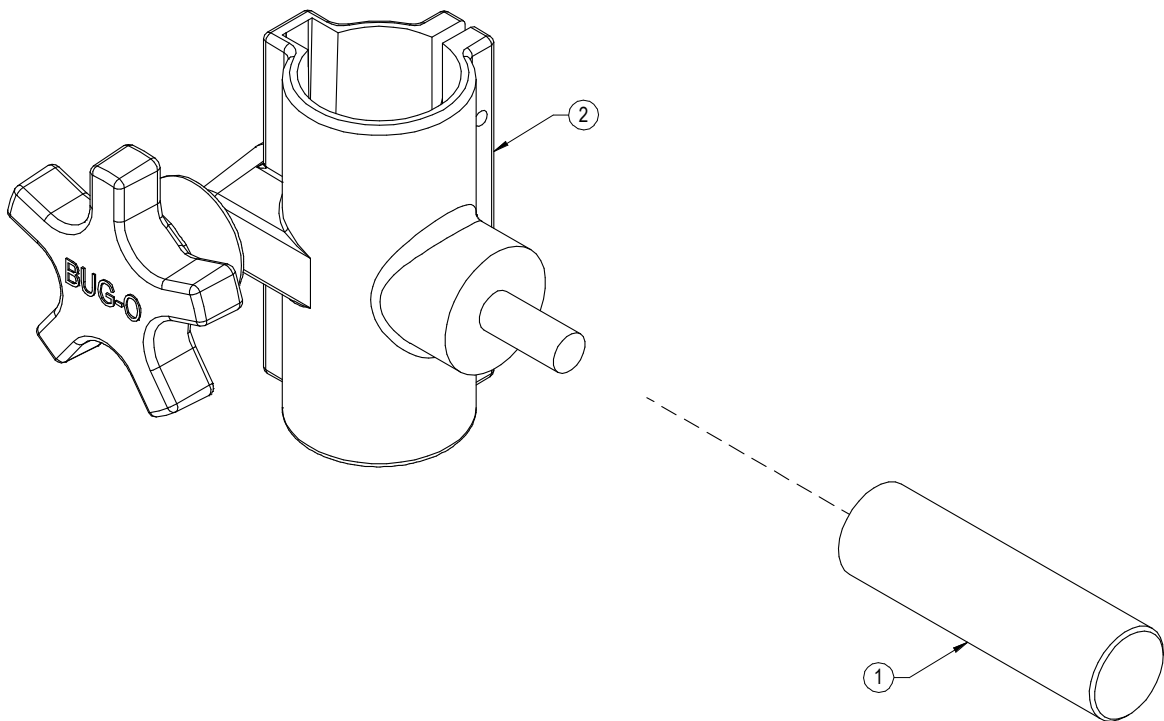
PARTS LIST			
ITEM	PART #	DESCRIPTION	QTY
1	BUG-1437	1/4-20 X 3/4" ALL THREAD	1
2	BUG-2085	WING NUT 1/4-20	2
3	BUG-2709	ANCHOR PLATE	1
4	BUG-2713	POST 3"	1
5	BUG-2771	SPADE BOLT	1
6	BUG-2773	CLAMP	1
7	PRS-0129	ROLL PIN 1/8" X 1"	1
8	RPS-2121	ROLL PIN 1/8" X 1-1/4"	1



(BUG-5188) TORCH HOLDER ASSEMBLY / EXPLODED VIEW / PARTS LIST

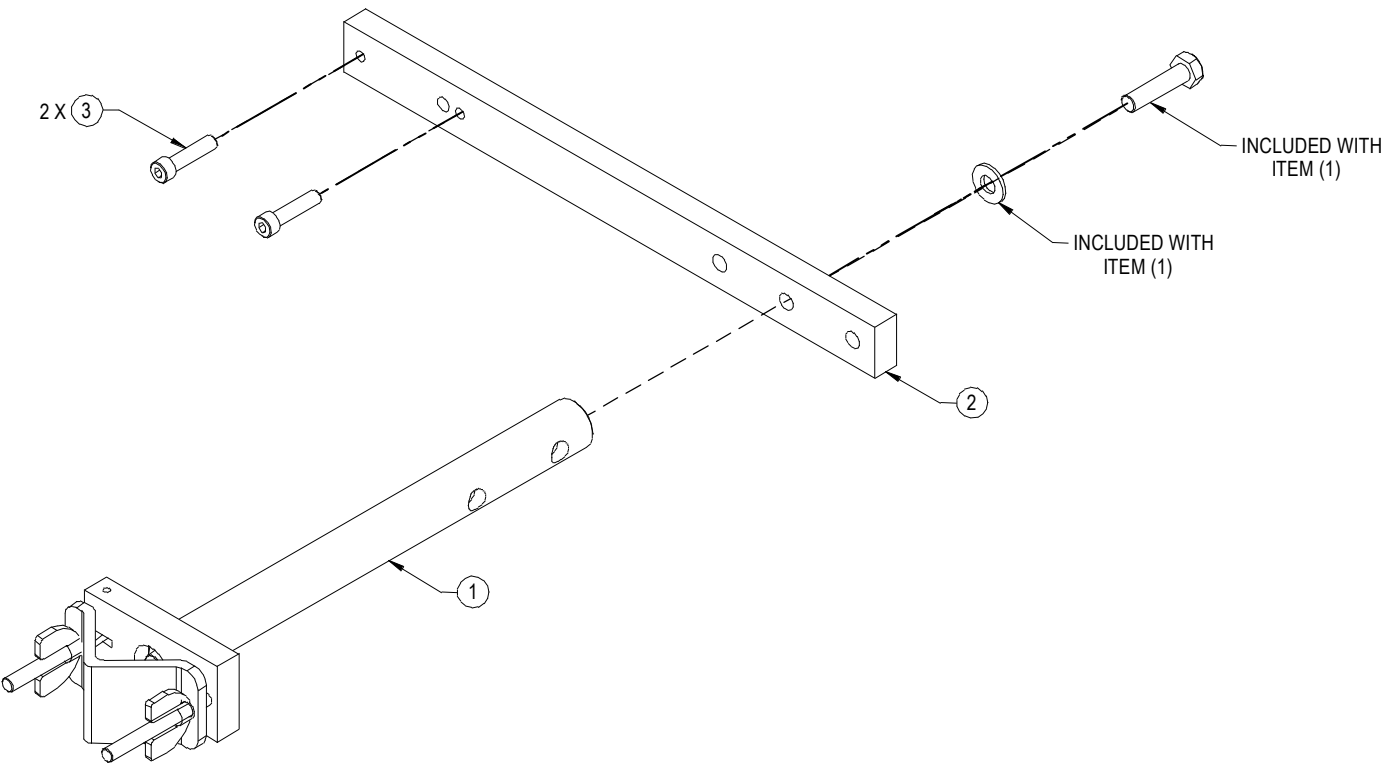
Also available with different sized rods:

- *Not Shown:
- *BUG-5188-1.5 (w/ 1.5" rod)
- *BUG-5188-10 (w/ 10" rod)



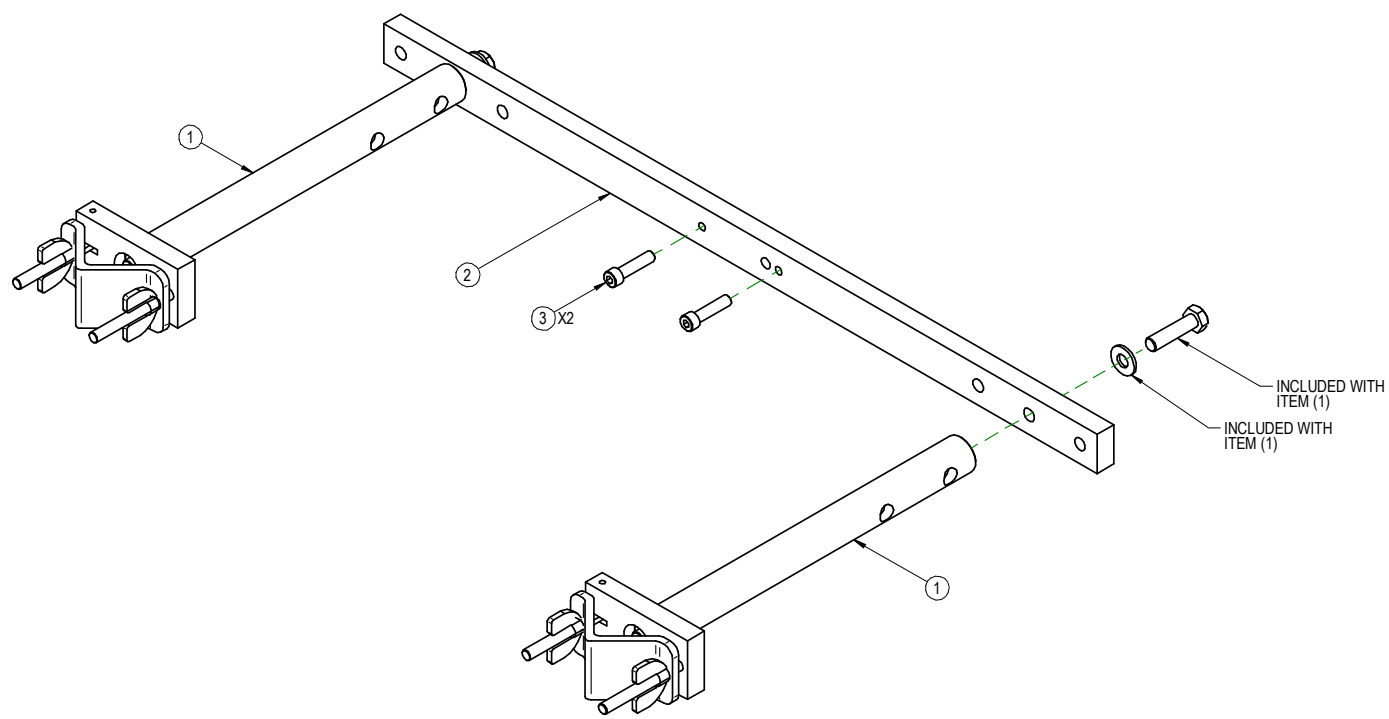
PARTS LIST			
ITEM	PART NO.	QTY	DESCRIPTION
1	BUG-2698	1	ROD 3"
2	BUG-5163	1	TORCH HOLDER ASSEMBLY

(BUG-2975) CABLE MOUNTING ASSEMBLY / EXPLODED VIEW / PARTS LIST



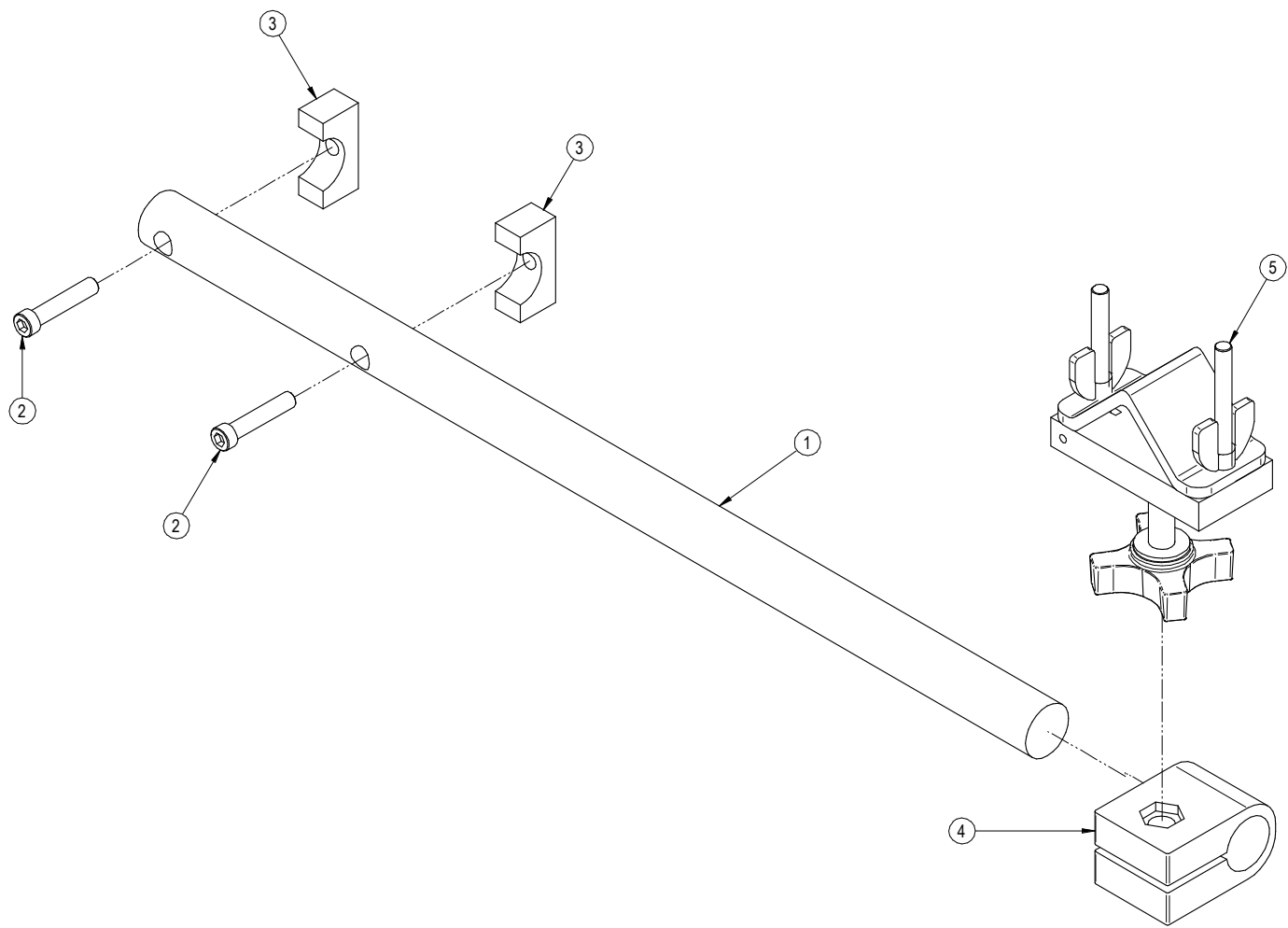
PARTS LIST			
ITEM	PART NO.	QTY	DESCRIPTION
1	BUG-2668	1	CABLE ANCHOR BRACKET
2	BUG-2927	1	CABLE BAR
3	FAS-0559	2	SOC HD CAP 1/4-20 X 1"

(BUG-2975-2) DUAL CABLE ANCHOR ASSEMBLY / EXPLODED VIEW / PARTS LIST



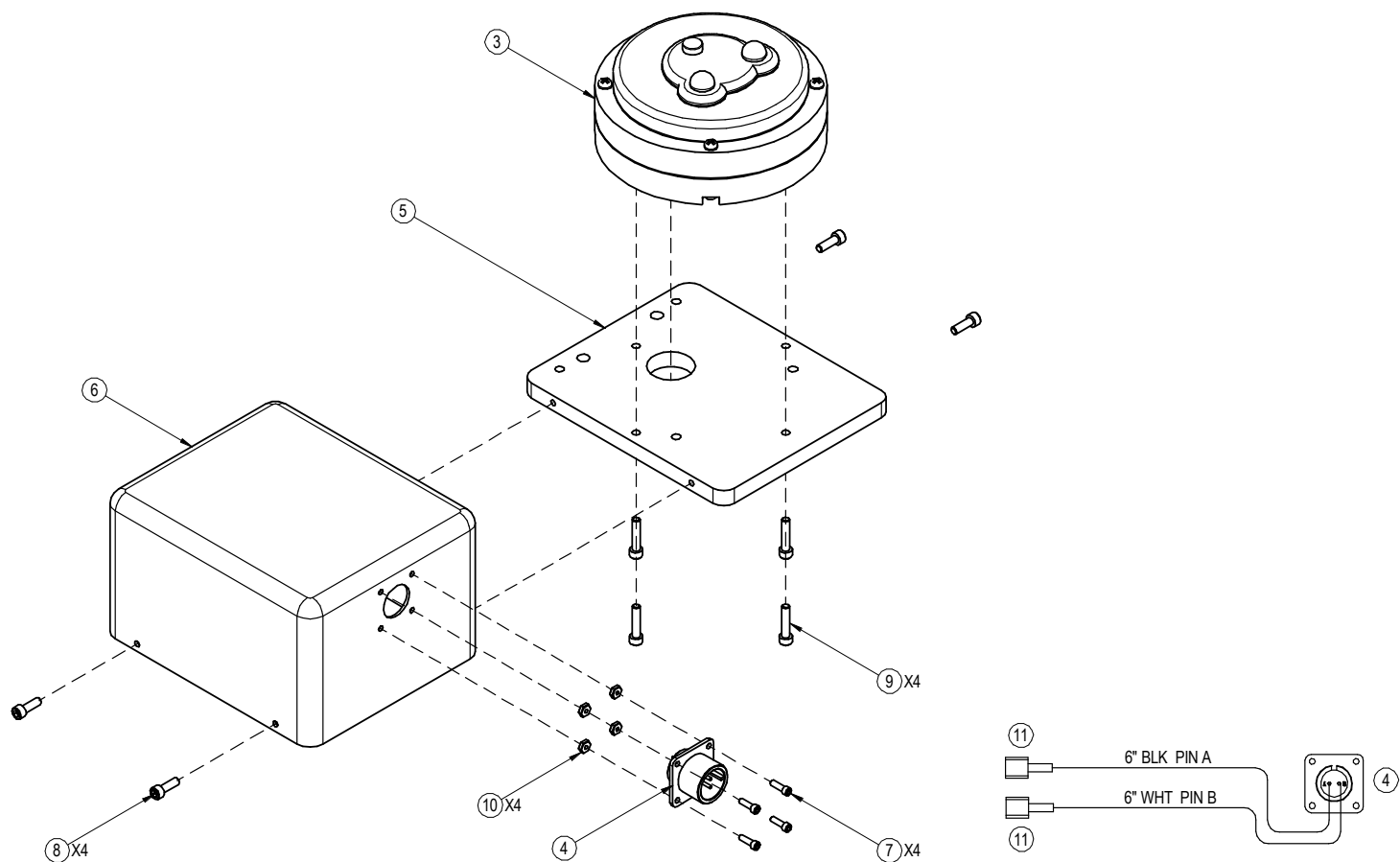
BILL OF MATERIALS			
ITEM	PART NO	DESCRIPTION	QTY
1	BUG-2668	CABLE ANCHOR BRACKET	2
2	BUG-2928	DUAL CABLE ANCHOR BAR	1
3	FAS-0559	SOC HD CAP 1/4-20 X 1	2

(BUG-1540) CABLE ANCHOR ASSEMBLY / EXPLODED VIEW / PARTS LIST



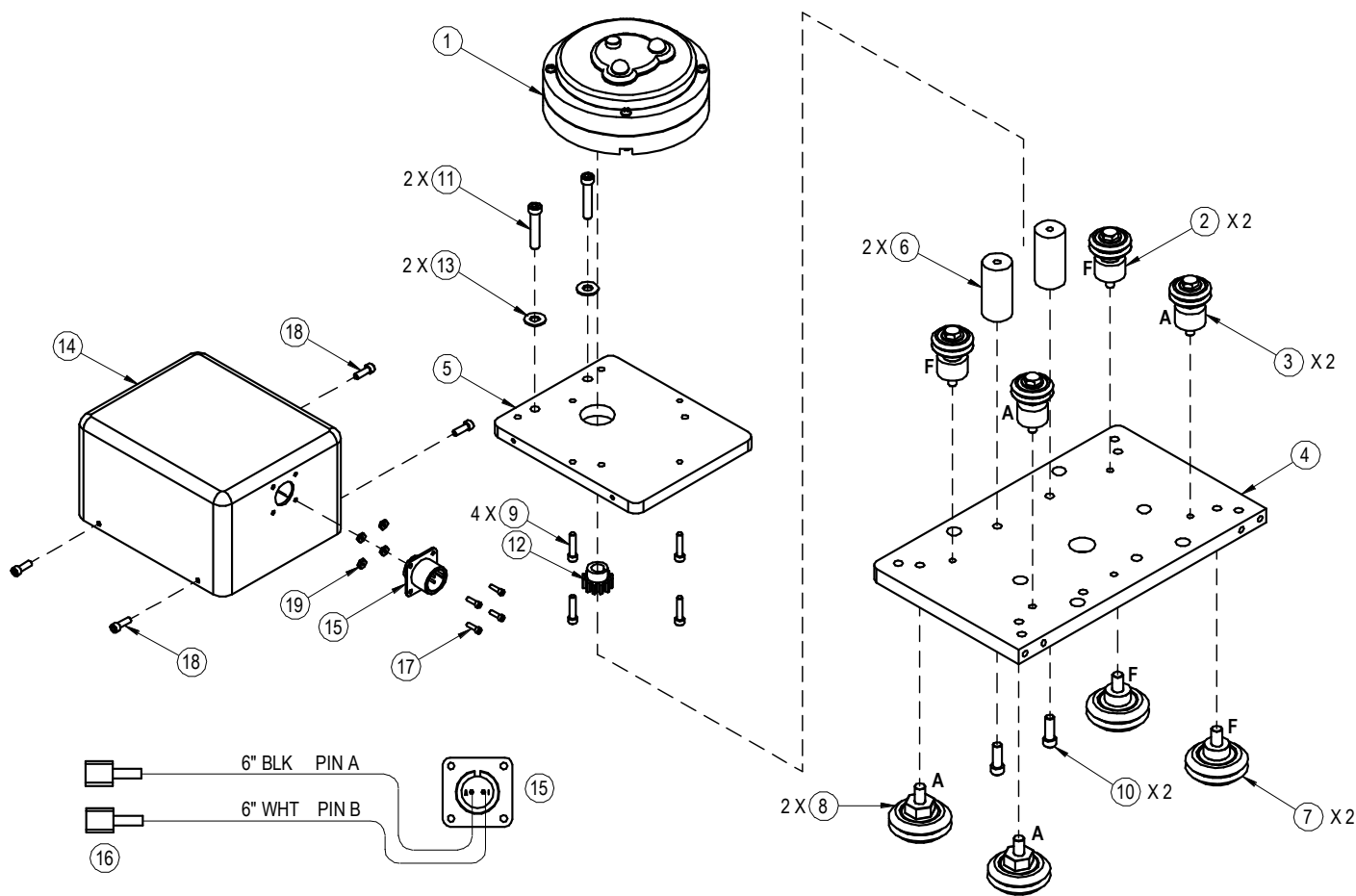
PARTS LIST			
ITEM	PART #	DESCRIPTION	QTY
1	BUG-1539	CLAMP BAR	1
2	FAS-2551	SOC HD CAP SCR 1/4-20 X 1-1/4	2
3	CON-1012	BLOCK	2
4	PAN-1033	ROD CLAMP	1
5	BUG-2660	FITS ALL CLAMP	1

(CWP-3355) HEAVY DUTY RACK 80:1 (NO MOUNTING BRACKET)
EXPLODED VIEW / PARTS LIST



BILL OF MATERIALS			
Memo	Component Item	Description	Quantity
1	900-2-W09	WHITE 20GA. STRANDED, 1000V	6
2	900-2-W10	BLACK 20GA. STRANDED, 1000V	6
3	BUG-1590	GEAR MOTOR (80:1)	1
4	BUG-9486	PANEL CONNECTOR, 2T, M	1
5	CWO-1693	RACKER MOTOR MT PLT	1
6	CWO-1696	MOTOR ENCLOSURE	1
7	FAS-0504	SOC HD CAP 4-40 X 3/8	4
8	FAS-0525	SOC HD CAP 8-32 X 1/2	4
9	FAS-0527	SOC HD CAP 8-32 X 3/4	4
10	FAS-1305	HEX NUT 4-40	4
11	GOF-3036	QD FEMALE, FULLY INSULATED	2

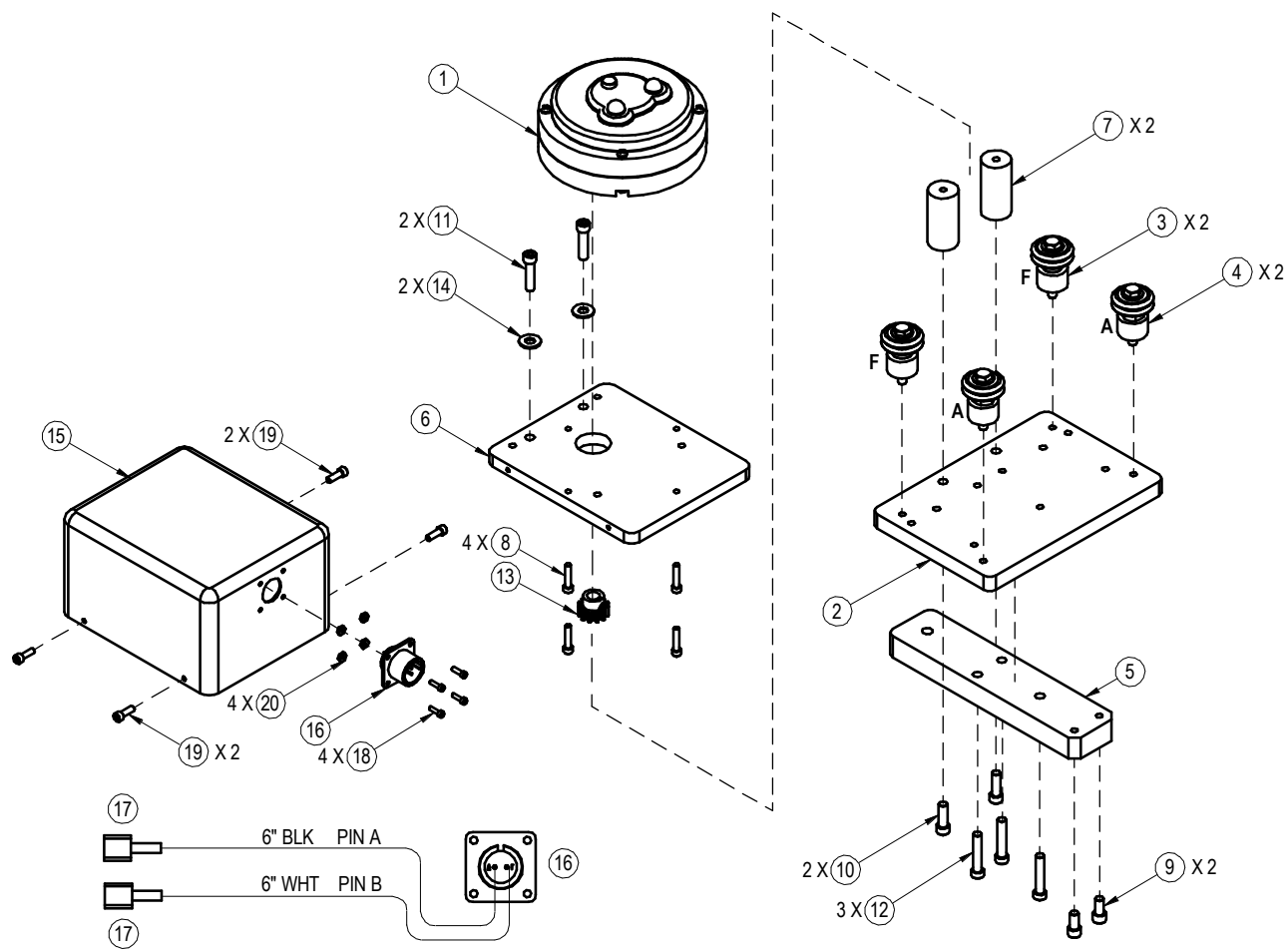
(CWO-1690-MH) LARGE MOTORIZED RACKER HORIZONTAL / EXPLODED
VIEW / PARTS LIST



PARTS LIST

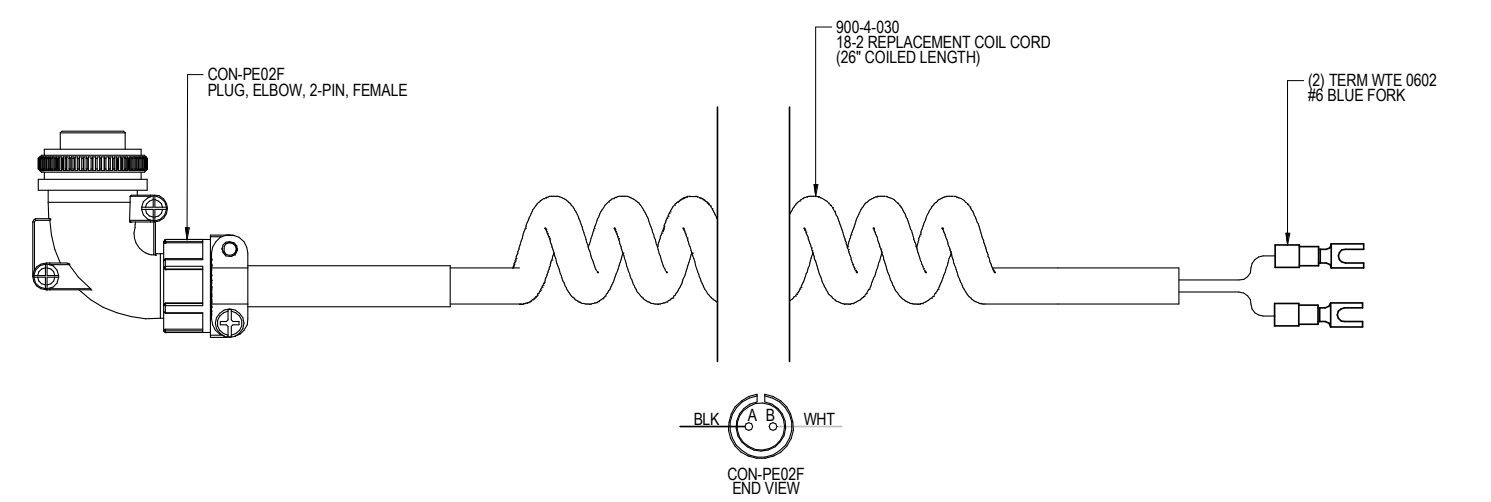
ITEM	PART #	DESCRIPTION	QTY
1	BUG-1550	GEAR MOTOR (150:1)	1
2	CWO-1680	W2 FIXED LEG & WHEEL	2
3	CWO-1681	W2 ADJ. LEG & WHEEL	2
4	CWO-1687	MOUNT PLT LARGE RACKER	1
5	CWO-1693	RACKER MOTOR MT PLT	1
6	CWO-1694	STAND-OFF	2
7	CWO-4326	FIXED LEG & WHEEL	2
8	CWO-4327	ADJ. LEG & WHEEL	2
9	FAS-0527	SOC HD CAP 8-32 X 3/4"	4
10	FAS-0557	SOC HD CAP 1/4-20 X 3/4"	2
11	FAS-0559	SOC HD CAP 1/4-20 X 1"	2
12	GOF-3014	DRIVE PINION W/ KEY	1
13	WAS-0240	1/4" SAE WASHER	2
14	CWO-1696	MOTOR ENCLOSURE	1
15	BUG-9486	PANEL CONNECTOR 2-T M	1
16	GOF-3036	QD FEMALE	2
17	FAS-0504	SOC HD CAP 4-40 X 3/8"	4
18	FAS-0525	SOC HD CAP 8-32 X 1/2"	4
19	FAS-1305	HEX NUT 4-40	4

(CWO-1675-MV) MOTORIZED VERTICAL RACKER / EXPLODED VIEW / PARTS LIST



PARTS LIST			
ITEM	PART #	DESCRIPTION	QTY
1	BUG-1550	GEAR MOTOR (150:1)	1
2	CWO-1677	MOUNT PLATE	1
3	CWO-1680	W2 FIXED LEG & WHEEL	2
4	CWO-1681	W2 ADJ. LEG & WHEEL	2
5	CWO-1682	RACKER MOUNT BAR	1
6	CWO-1693	RACKER MOTOR MT PLT	1
7	CWO-1694	STAND-OFF	2
8	FAS-0527	SOC HD CAP 8-32 X 3/4"	4
9	FAS-0555	SOC HD CAP 1/4-20 X 1/2"	2
10	FAS-0557	SOC HD CAP 1/4-20 X 3/4"	2
11	FAS-0559	SOC HD CAP 1/4-20 X 1"	2
12	FAS-2551	SOC HD CAP 1/4-20 X 1-1/4"	3
13	GOF-3014	DRIVE PINION W/ KEY	1
14	WAS-0240	1/4" SAE WASHER	2
15	CWO-1696	MOTOR ENCLOSURE	1
16	BUG-9486	PANEL CONNECTOR 2-T M	1
17	GOF-3036	QD FEMALE	2
18	FAS-0504	SOC HD CAP 4-40 X 3/8"	4
19	FAS-0525	SOC HD CAP 8-32 X 1/2"	4
20	FAS-1305	HEX NUT 4-40	4

(CWO-3976) POWER RACKER CABLE / PARTS LIST



TROUBLESHOOT AND MAINTENANCE

PRS-1180 – Control Box

PRS-1070 – Single Motion Pendant

PRS-1075 – Dual Motion Pendant

PRS-1050 – Motorized Block

If there is no motor movement -

1. Make sure that the power cord of the (PRS-1180) control box is properly plugged into an active AC receptacle. Test the outlet by plugging in another device.
2. Make sure that the circuit breaker hasn't tripped. Press it to reset it.
3. Make sure that the connector cable of the (PRS-1070) pendant is securely attached to the control box.
4. Make sure that the connector cable of the (PRS-1050) motor assembly is securely attached to the control box.
5. The motor within the (PRS-1050) Motorized Block may be defective. Try a substitute motor. Replace if necessary.
6. The speed card (CAS-1770-002) may be defective. Replace if necessary.

The motor will only travel in one direction –

1. Check the direction switch on the pendant.
2. Check that the connector on the pendant is securely attached to the control box.
3. The speed card (CAS-1770-002) may be defective. Replace if necessary.

The motor speed is not adjustable or runs at full speed –

1. Check the speed potentiometer on the pendant.
2. The speed card (CAS-1770-002) may be defective. Replace if necessary.

WARRANTY

Limited 3-Year Warranty*

Model _____
Serial No. _____
Date Purchased: _____
Where Purchased: _____

For a period ending one (1) year from the date of invoice, Manufacturer warrants that any new machine or part is free from defects in materials and workmanship and Manufacturer agrees to repair or replace at its option, any defective part or machine. HOWEVER, if the invoiced customer registers the Product Warranty by returning the Warranty Registration Card supplied with the product within 90 days of the invoice date, or by registering on-line at www.bugo.com, Manufacturer will extend the warranty period an additional two (2) years which will provide three (3) total years from the date of original invoice to customer. This warranty does not apply to machines which, after Manufacturer's inspection are determined by Manufacturer to have been damaged due to neglect, abuse, overloading, accident or improper usage. All shipping and handling charges will be paid by the customer.

The foregoing express warranty is exclusive, and Manufacturer makes no representation or warranty (either express or implied) other than as set forth expressly in the preceding sentence. Specifically, Manufacturer makes no express or implied warranty of merchantability or fitness for any particular purpose with respect to any goods. Manufacturer shall not be subject to any other obligations or liabilities whatsoever with respect to machines or parts furnished by Manufacturer.

Manufacturer shall not in any event be liable to Distributor or any customer for any loss of profits, incidental or consequential damages or special damages of any kind. Distributor's or customer's sole and exclusive remedy against Manufacturer for any breach of warranty, negligence, strict liability or any other claim relating to goods delivered pursuant hereto shall be for repair or replacement (at Manufacturer's option) of the machines or parts affected by such breach.

Distributor's Warranty:

In no event shall Manufacturer be liable to Distributor or to any customer thereof for any warranties, representations or promised, express or implied, extended by Distributor without the advance written consent of Manufacturer, including but not limited to any and all warranties of merchantability or fitness for a particular purpose and all warranties, representations or promises which exceed or are different from the express limited warranty set forth above. Distributor agrees to indemnify and hold Manufacturer harmless from any claim by a customer based upon any express or implied warranty by Distributor which exceeds or differs from Manufacturer's express limited warranty set forth above.

HOW TO OBTAIN SERVICE:

If you think this machine is not operating properly, re-read the instruction manual carefully, then call your Authorized BUG-O dealer/distributor. If they cannot give you the necessary service, write or phone us to tell us exactly what difficulty you have experienced. BE SURE to mention the MODEL and SERIAL numbers.

*Bug-O System's warranty applies to Bug-O components only. Where other brands of power sources, wire feeders or sub-components are a part of Bug-O Equipment, please refer to that specific Manufacturer's manual for warranty specifications on their components.