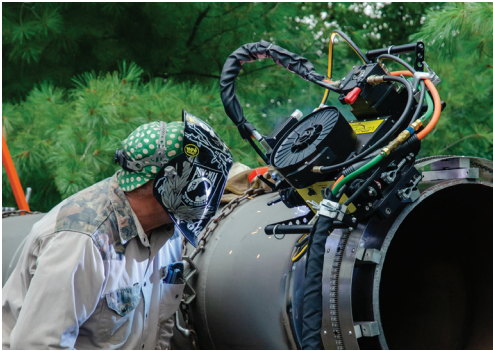


Versa-Bug



Versa-Bug is BUG-O Systems' first digital Bug. It combines digital smart motors with common power and communication cables via Ethercat with a PLC controller for precise digital control and reliable operation. It incorporates a linear weaver and height slide for 3-axis motion control and can run on rigid rail, semi-flex rail, or flexible PSR rail by changing the carriage. The robust tractor design can carry up to 100 lb. at up to 90 inches per minute in all positions, with steering and weaving distance only limited to arm length. The Versa-Bug can be equipped with an onboard BUG-O wire feeder or utilize a Lincoln 4R220 wire feeder and comes standard with automatic height control for CV modes.

All machine controls and welding parameters for most analog power sources can be set via the touchscreen user interface. The pendant also includes analog joysticks for tractor, weaver, height, and wire feeder jogging and adjustments, as well as toggle switches for on the fly parameter changes. The Versa-Bug can store up to 10 weld passes for ease of repeatability. The Versa-Bug is designed to be modular, configurable and upgradable. The tractor with weaver, the height slide, and the Bug-O feeder are available as Ethercat drives with motors. This creates an open Bug-O motion platform consisting of the Versa-Bug drives and rails. The Bug-O motion platform can be controlled via a customer's custom PC/PLC controller.

Features:

- 120/240V, 50/60HZ input
- Common cables – Power and communication in one cable
- Built-in troubleshooting – Errors reported to main controller
- Easily integrated – Modular/Configurable/Upgradable via ethercat
- Robust tractor design
- Integral linear weaver and height slide
- Travels on multiple rail types
- Lightweight pendant with integrated touch screen interface
- Welding parameter control on pendant for analog power sources
- Made in USA



Versa-Bug Kit
Includes Lincoln Electric® 4R220
100-1400-001



Versa-Bug Kit
Includes BUG-O Feeder
100-1400-002

Versa-Bug Options

1 RAILS



Aluminum Rigid Rail 8' (2.37 m)
ARR-1080-CS



Semi-Flex Rail 8' (2.37m) - Flex to minimum radius 15' (5 m)
AFR-3000-CS



Piper Steel Rail PSR-2000-_
Piper Flex Rail PSR-2200-__

Minimum Workpiece Diameter 12" (304.8 mm)

2 ATTACHMENTS

Aluminum Rigid Rail 4' (1.18 m)
ARR-1085-CS



R.E. On/Off Magnet
ARM-2010-CS

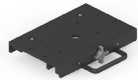


R.E. On/Off Magnet
AFR-2010-CS

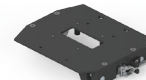


Piper Flex Magnet
PSR-2210

3 CARRIAGES



12" (305 mm) Releasable Carriage
MPD-1065



PSR II Carriage
100-0776

4 VERSA-BUG

Versa-Bug Kit

Includes Lincoln Electric® 4R220
100-1400-001



Versa-Bug Kit

Includes BUG-O Feeder
100-1400-002

