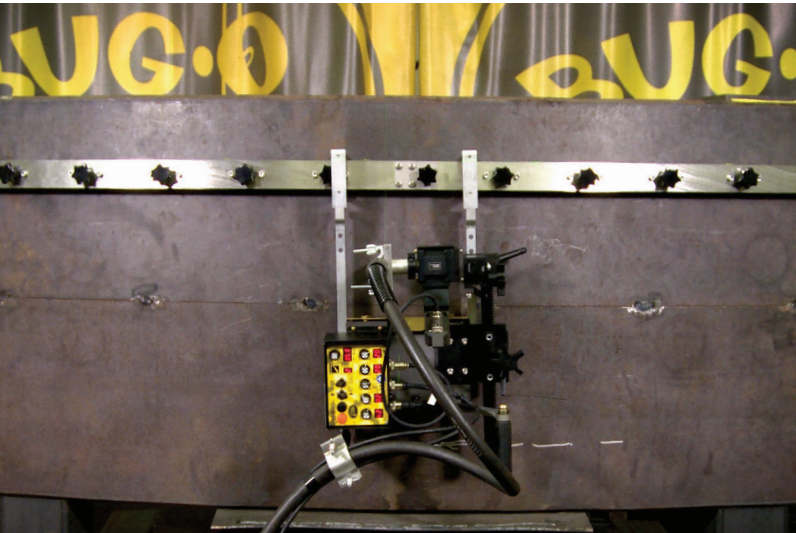




# PRODUCT ANNOUNCEMENT

## K-BUG Guide Follower Arm Kits and Quick Adjust Guide Rail



*KBUG-3500 shown with Follower Arms & Guide Rail System*

BUG-O is pleased to introduce two new accessories for welding butt joints with the KBUG 1200 and KBUG 3500. The Follower Arm Kits and Quick Adjust Guide Rail System expands the range of applications for the KBUG 1200 and KBUG 3500 to butt welds in addition to typical fillet weld applications. A conversion kit is available to convert a KBUG 3000 to a KBUG 3500.

The Quick Adjust Guide Rails feature on/ off magnets and quick connect ends that allow for fast set up and fine adjustment. Aligning and setting the rail is fast and easy with no stumbling with permanent magnets.

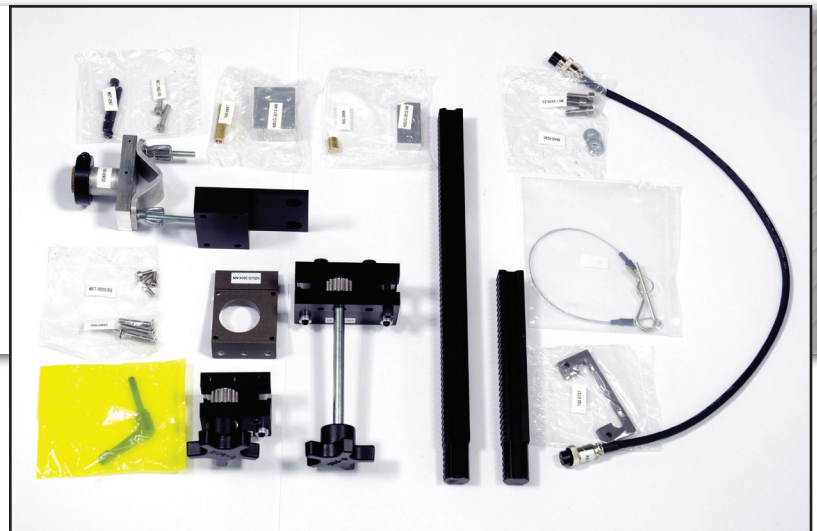
The Follower Arms will retrofit on existing KBUG machines; however, they are machine specific. The machined aluminum arms feature, durable stainless steel rollers with brass thrust bearings that ensure smooth operation to maximize life. Each arm has indexed positive set points for accurate in and out adjustments of the KBUG drive. We also used large glove friendly screws for a precise fit to the machine.

Part Number	For Machine	Description
100-0910-3000	KBUG 3500	KBUG Arm Guide Kit 3000
100-1002	KBUG 3000	Conversion Kit KBUG 3000/3500
(will convert KBUG-3000 To KBUG-3500 to use arms)		
100-0910-1200	KBUG 1200	KBUG Arm Guide Kit 1200
100-0902	KBUG 1200/3000	6' guide rail with on/off magnets

### Applications:

Improves and allows for tracking joints such as:

- Butt welds
- Fillet welds
- Flat surfaces
- Curved surfaces



*100-1002 Conversion Kit*

## Features and Benefits:

### Follower Arms:

- Machine specific for KBUG 1200 or KBUG 3500  
A conversion kit is available to convert a KBUG 3000 to a KBUG 3500.
- Durable construction
  - Machined aluminum for strength, weld spatter resistance and light weight
  - Stainless steel rollers
  - Brass bearings
- Indexed set points on arms
  - Positive, easy to find, in and out adjustment of arms
  - Large, glove friendly wing screws

### Guide Rails:

- Stainless steel material for durability
- Contours to curved surfaces
- On/Off magnets
  - Simple accurate set up. One turn and a magnet is on or off allowing for easy repositioning
  - Easy to use, glove friendly knobs
- Quick connect ends
  - Accurate set up
  - Allows for easy leapfrogging for longer welds

## ABOUT BUG-O SYSTEMS

Bug-O Systems is leading the design, development, and manufacture of track, automation, and motion control for arc welding and cutting. Weld Tooling Corporation has earned this recognition as a leading global manufacturer over our seventy-four years of dedication to the welding and cutting Industry. This has resulted in a customer-focused and market-driven view of the welding industry. Headquartered in the greater Pittsburgh, Pennsylvania area, Bug-O has a worldwide network of distributors and sales offices covering more than 100 countries.



### FOR MORE INFORMATION:

Bug-O Systems  
280 Technology Drive  
Canonsburg, PA 15317

**Contact Name:** Vince Grlovich

**Phone:** 1-412-331-1776

**E-mail:** sales@bugo.com

**Website:** www.bugo.com