

INSTRUCTIONS and PARTS MANUAL

CB-2, CB-3 CIRCLE BURNER

Please record your equipment identification information below for future reference. This information can be found on your machine nameplate.

Model Number _____

Serial Number _____

Date of Purchase _____

Whenever you request replacement parts or information on this equipment, always supply the information you have recorded above.

LIT-CB2-CB3-IPM-0422

Bug-O Systems is committed to empowering our customers by providing operator controlled mechanized solutions for their welding, cutting and custom applications.



B U G - O S Y S T E M S

A DIVISION OF WELD TOOLING CORPORATION

280 TECHNOLOGY DRIVE CANONSBURG, PENNSYLVANIA 15317-9564 USA
PHONE: 412-331-1776 <http://www.bugo.com> FAX: 412-331-0383



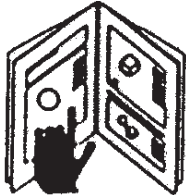
SAFETY

PROTECT YOURSELF AND OTHERS FROM SERIOUS INJURY OR DEATH. KEEP CHILDREN AWAY. BE SURE THAT ALL INSTALLATION, OPERATION, MAINTENANCE AND REPAIR PROCEDURES ARE PERFORMED ONLY BY QUALIFIED INDIVIDUALS.



ELECTRIC SHOCK CAN KILL.

- 1) The equipment is not waterproof. Using the unit in a wet environment may result in serious injury. Do not touch equipment when wet or standing in a wet location.
- 2) The unused connectors have power on them. Always keep the unused connectors covered with the supplied protective panels. Operation of the machine without the protective panels may result in injury.
- 3) Never open the equipment without first unplugging the power cord or serious injury may result.
- 4) Verify the customer supplied power connections are made in accordance with all applicable local and national electrical safety codes. If none exist, use International Electric Code (IEC) 950.
- 5) Never remove or bypass the equipment power cord ground. Verify the equipment is grounded in accordance with all applicable local and national electrical safety codes. In none exist, use International Electric Code (IEC) 950.



READ INSTRUCTIONS.

Read the instruction manual before installing and using the equipment.



EQUIPMENT DAMAGE POSSIBLE.

- 1) Do not plug in the power cord without first verifying the equipment is OFF and the cord input voltage is the same as required by the machine or serious damage may result.
- 2) Always verify both the pinion and wheels are fully engaged before applying power or equipment damage may occur.
- 3) Do not leave the equipment unattended.
- 4) Remove from the work site and store in a safe location when not in use.



FALLING EQUIPMENT can cause serious personal injury and equipment damage.

Faulty or careless user installation is possible. As a result, never stand or walk underneath equipment.



MOVING PARTS can cause serious injury.

- 1) Never try to stop the pinion from moving except by removing power or by using the STOP control.
- 2) Do not remove any protective panels, covers or guards and operate equipment.

HIGH FREQUENCY WARNINGS

SPECIAL PRECAUTIONS ARE REQUIRED WHEN USING PLASMA, TIG OR ANY WELDING PROCESS THAT USES HIGH FREQUENCY TO STRIKE AN ARC.



WARNING: HIGH FREQUENCY CAN EFFECT MACHINE OPERATION AND THEREFORE, WELD QUALITY.

Read the precautions below before installing and using the equipment.

PRECAUTIONS:

- 1) Some plasma or welding cables are strong sources of high frequency interference. NEVER lay a plasma or welding cable across the controls of the machine.
- 2) Always physically separate the plasma or welding cable leads from the machine cables. For example, the plasma or welding cable leads should NEVER be bundled with a pendant cable or the machine power cord. Maximize the separation between any machine cables and the plasma or welding cables.
- 3) Strictly follow the grounding procedures specified for the plasma or welding unit. NOTE: Some plasma and welding units produce exceptionally large amounts of high frequency noise. They may require a grounding rod be driven into the earth within six feet (2 meters) of the plasma or welding unit to become compatible with an automatic cutting or welding process.
- 4) If the high frequency is produced using a spark gap, adjust the points so the gap is as small as possible. The larger the gap, the higher the voltage and the higher the interference.
- 5) Some plasma or welding units will inject high frequency interference into the AC power line. Use separate power line branches whenever possible to power the plasma or welding source and the machine. Do not plug them into the same outlet box.
- 6) High frequency noise may enter the machine through the plasma or welding supply remote contactor leads. Some plasma and welding sources can produce noise spikes of up to several thousand volts. These sources are not compatible with automated cutting and welding equipment. It is recommended that the remote contactor leads on these plasma or welding sources not be connected to the machine. An alternate solution is to purchase a separate remote contactor isolation box.

CB-2, CB-3 CIRCLE BURNER

INSTRUCTIONS AND PARTS MANUAL

TABLE OF CONTENTS

PAGE

5Introduction / Features
6Setup and Operation
7Making a Cut
8CWO-6210 Rotation Control for CBO-2000/CBO-2002
9Technical Data: (CB-2 Circle Burner) / Dimensions
10Technical Data: (CB-3 Circle Burner) / Dimensions
11CBO-2000 CBO-2002 CB-2 Circle Burner / Exploded View / Parts List
12100-0437 CB2, CB3 COM Group / Exploded View / Parts List
13CBO-2000 CBO-2002 CB-2 Circle Burner / Wiring Diagram
14CBO-3000 CBO-3002 CB-3 Circle Burner / Exploded View / Parts List
15CBO-3000 CBO-3002 CB-3 Circle Burner / Wiring Diagram
16CWO-1635 Racking System CB-2, CB-3 / Exploded View / Parts List
16CWO-1690 Large Horizontal Racker / Exploded View / Parts List
17CWO-3193 CB-2, CB-3 Housing Assembly / Exploded View / Parts List
17CWO-3205 7" Cam Assembly / Exploded View / Parts List
18CWO-3358 CB-2, CB-3 Motor & Transmission Plate / Exploded View / Parts List
18CWO-3359 Transmission SW 5:1 / Exploded View / Parts List
19CWO-3361 P.M. Motor Assembly / Exploded View / Parts List
19CWO-3425 CB-2, CB-3 Camshaft & Spacer Assembly / Exploded View / Parts List
20CWO-3501 CB-2, CB-3 Shaft Assembly / Exploded View / Parts List
20CWO-3920 Slide Bar Mounting Assembly / Exploded View / Parts List
21CWO-3960 CB-2, CB-3 Small Brush Assembly / Exploded View / Parts List
21CWO-3961 CB-2, CB-3 Small Retainer Block / Detail View
22CWO-6210 Rotation Control / Exploded View / Parts List
23CWO-6210 Rotation Control / Wiring Diagram / Electrical Component Chart
24CWO-6210-CB2 CWO-6210-CB2-240 Rotation Control / Exploded View / Parts List
25CWO-6210-CB2 CWO-6210-CB2-240 Rotation Control / Wiring Diagram / Electrical Component Chart
26CWO-3073 CB-2 Frame / Exploded View / Parts List
27Accessories / CWO-3744 Manipulator Bracket / CWO-3895 Hillside Kit / CWO-3744 Manipulator Bracket / Exploded View / Parts List
28CB-3 & CB-3H Circle Burner (only) - Burning Hillside Holes
30Preventive Maintenance / CB-2, CB-3 Circle Burner
32Warranty

INTRODUCTION:

The CB-2 (CBO-2000 & CBO-2002) Circle Burner uses oxy-fuel for square or beveled hole cuts using a single cutting pass. The CB-2 is mounted on a special frame with a releasable permanent magnet base specially designed for use on vessels and large diameter pipe.

The CB-3 (CBO-3000 & CBO-3002) Circle Burner also uses oxy-fuel for single pass, square or beveled hole cuts. Mounted on a column and boom, manipulator or fixture, the CB-3 is designed for use on vessels, large diameter pipe, domed heads and flat plate.

FEATURES:

- 1-1/2 h.p. P.M. Motor and rotational speed control
- Rotation speed of 0.1-2 r.p.m.
- 100% duty cycle
- Adjustable vertical and horizontal torch positioning system
- Rise and fall cam assembly with 7" (178 mm) of travel
- 2 hose machine torch w / tip adjuster, includes tips
- Cutting capacities: 1.5"-42" (38-1067 mm) bevel cut holes, 4"-48" (102-1219 mm) square cut holes
- Brushes and collector rings for all controls, eliminates cable and hose wrap

SETUP AND OPERATION:

All page numbers referred to in this section are from this manual unless otherwise specified.

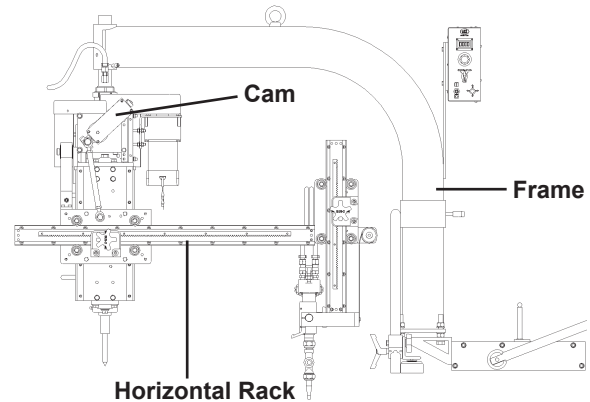
POWER SUPPLY: Uses standard 120/50-60/1 VAC or 240/50-60/1 VAC. The part number indicates voltage. (CBO-2000 and CBO-3000 are 120 VAC and CBO-2002 and CBO-3002 are 240 VAC).

OXY-FUEL CUTTING TORCH: The CB-2, CB-3 Circle Burner is equipped with a Victor 2-Hose Machine Oxy-Fuel Torch model 204-A w/rack. Refer to the Victor Oxy-Fuel Cutting Torch instruction manual supplied with this machine for general operation and set-up information. -H Machines are supplied with a Harris torch.

FIXTURING: All circle burners (excluding CB-2) have to be fixtured in some manner from the top of the shaft. This may be achieved in one of the following; column & boom, manipulator or a fixture devise.

OXYGEN / FUEL CONNECTIONS: The CB-2, CB-3 Circle Burner is designed to accept standard oxy-fuel hose fitting connections. These connections are located at the top of the shaft on all models.

RISE AND FALL OF THE CAM: All circle burners are equipped with a rise and fall cam assembly. The cam assembly must be aligned before any other settings can be made. To align the cam on the machine, align the horizontal rack parallel to the pipe (**on the CB-2 align the horizontal rack parallel to the frame with the torch next to the frame**). Adjust the gun holder so it is perpendicular to the horizontal rack. Loosen the set screws in the brass block on the cam, and rotate the cam to the vertical position as shown.



*For detailed information on burning hillside holes see p.27

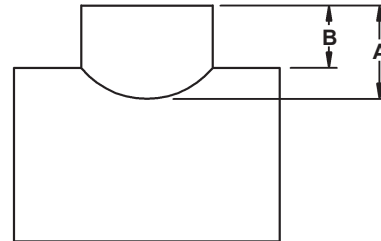
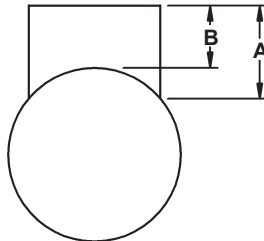
SETTING THE CAM: The cam setting is equal to the distance "B" subtracted from the distance "A".

EXAMPLE:

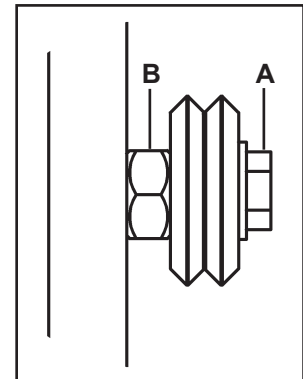
Let A=3 and B=2

$3-2=1$

The cam setting is 1.



WHEEL ADJUSTMENT: The CB-2, CB-3 Racking System CWO-1635 (Item #3 page 11 or 13) and the Large Horizontal Racker CWO-1690 (Item #4 page 11 or 13) are equipped with adjustable wheels. Always check these components for proper wheel adjustment before using the machine. The wheels need adjustment if you can cock or wiggle the components out of alignment. The wheels should be snug but not prohibit movement along the path of travel. The wheels with the hex stand off are adjustable. To adjust the wheels loosen the hex bolt (A) until the adjustable bushing (B) can be rotated. Correct the wheel alignment by rotating the adjustable bushing (B). Once adjusted, hold the adjustable bushing (B) while tightening the hex bolt (A). Recheck alignment.

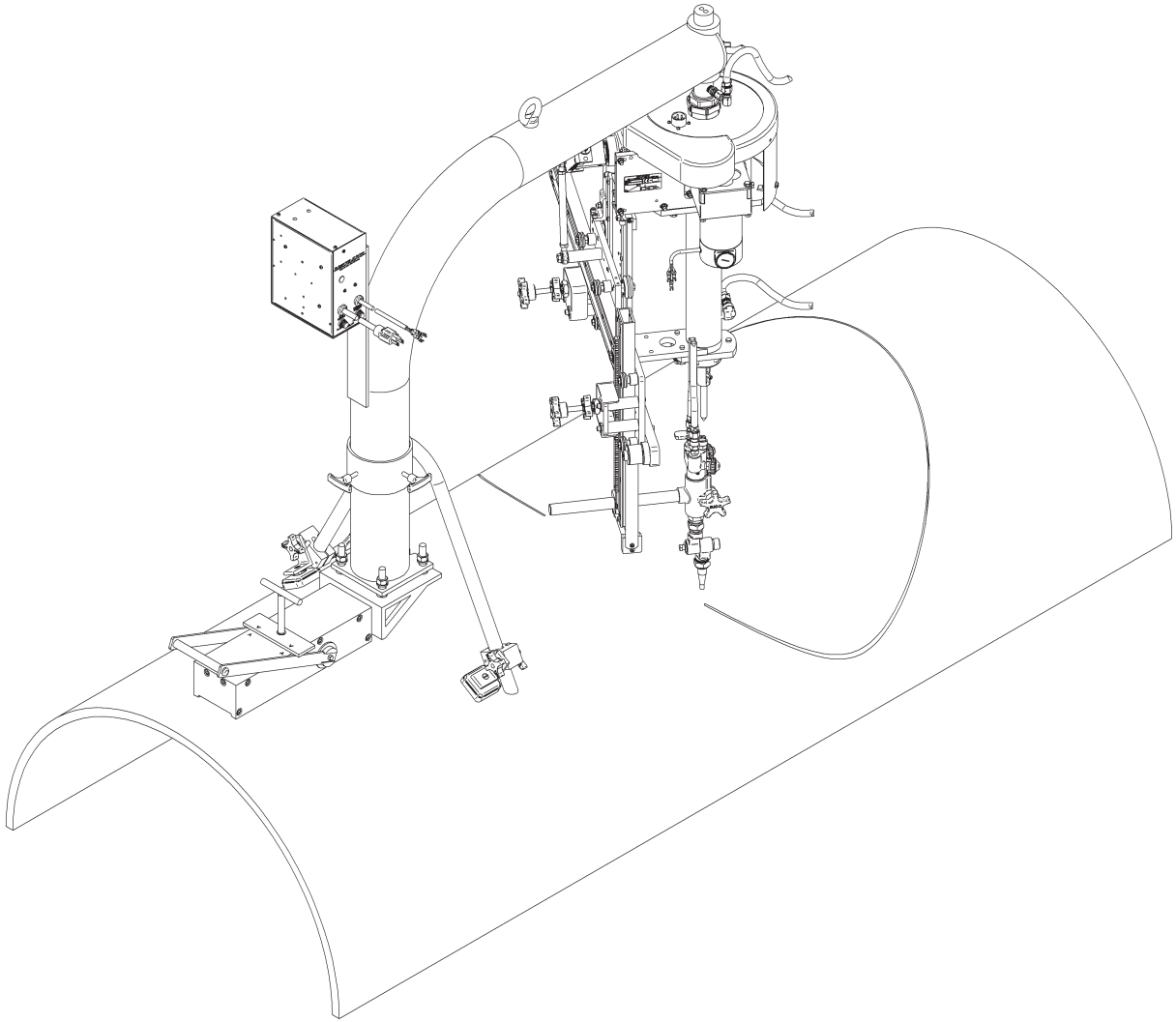


MACHINE CONTROLS: Various speed and directional capabilities can be controlled using the CWO-6210 Rotation Control. Please refer to CWO-6210 Rotation Control (page 21) section in this manual.

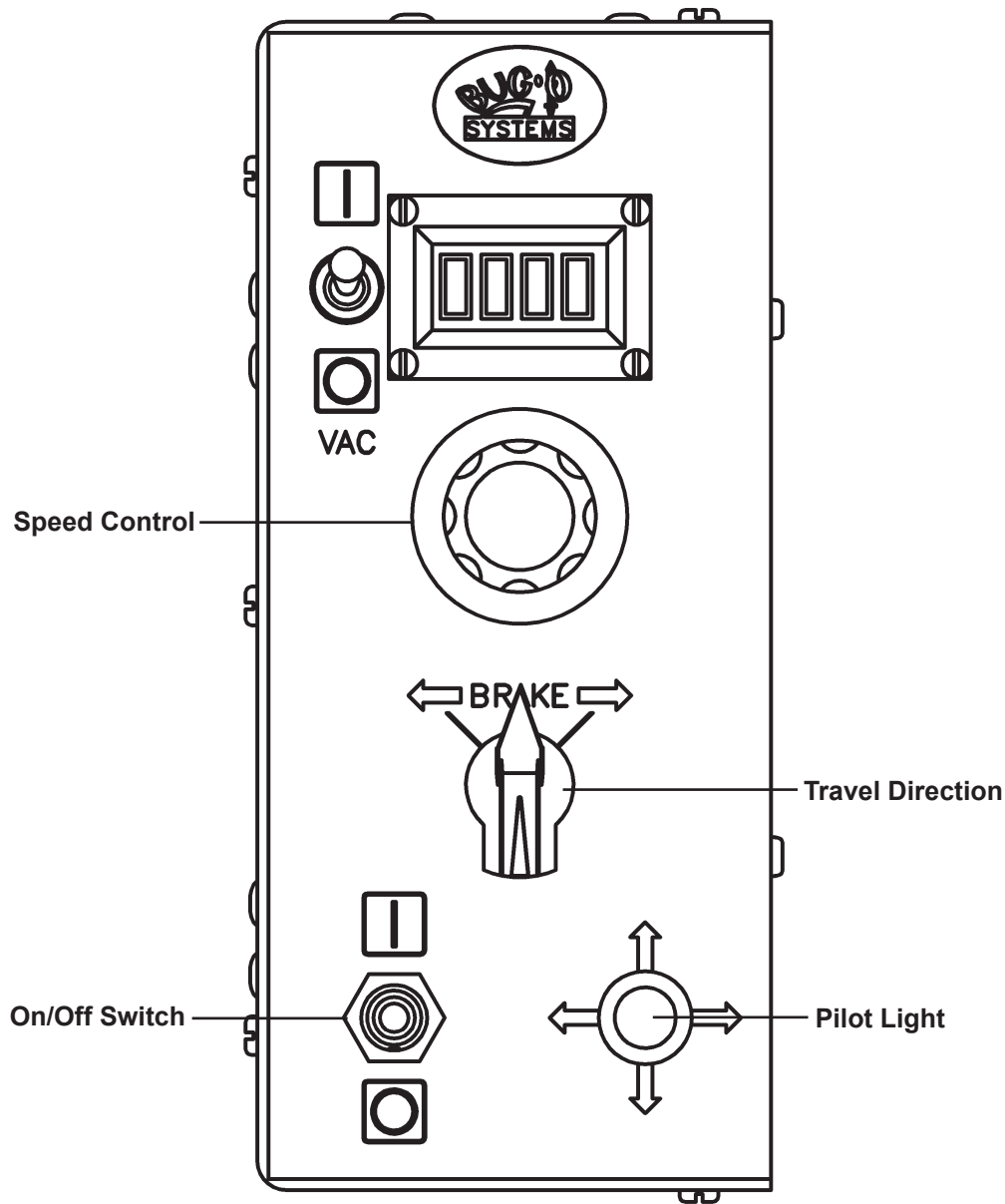
MAKING A CUT:

1. Position the torch to the starting location using the CWO-1635 Racking System. Ensure that the torch is at the appropriate position, standoff distance and angle.
2. Ignite torch. Refer to the torch manufacture instructions.
3. Preheat the spot were the cut is to be started. Before cutting action can start, the base metal must be preheated to a bright cherry red. When the red spot appears, depress the cutting oxygen lever slowly and firmly.
4. Start cutting rotation (forward or reverse) by using the Travel Direction Control located on the CWO-6210 Rotation Control (for operating instruction see page 8).
5. To stop the cutting processes and rotation, throw the oxygen lever to the "OFF" position and the travel direction control to the "BRAKE" position.

WARNING: IT IS NECESSARY TO USE CORRECT EYE, HEAD, AND BODY PROTECTION.



CWO-6210 ROTATION CONTROL FOR CBO-2000/CBO-2002



SPEED CONTROL:

Controls the speed in which the machine travels. The depicted lines 0 to 100 should not be construed as inches per minute of travel. They should be considered as reference points only.

TRAVEL DIRECTION:

Controls the direction in which the machine will travel. Select the left arrow for clockwise rotation, brake for stop, and the right arrow for counterclockwise rotation.

ON/OFF SWITCH:

The on/off switch enables/disables power to the rotation control box.

PILOT LIGHT:

The pilot light indicates whether the machine is on/off as dictated by the on/off switch.

TECHNICAL DATA: (CB-2 CIRCLE BURNER)

Rotation speed: 0.1-2 r.p.m.

Cam Range: 0-7" (0-178 mm)

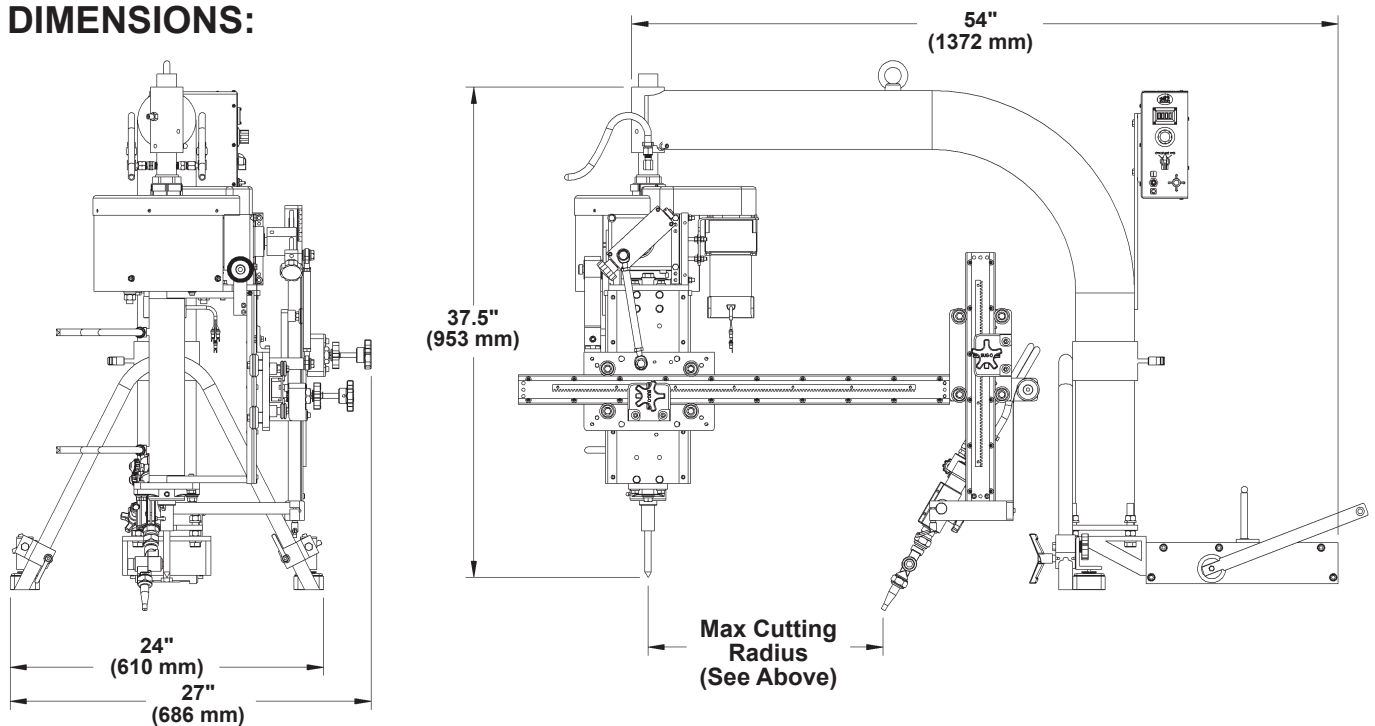
Cutting Diameter: **For Square Cut Holes:** 4"-48" (102-1219 mm)
For Bevel Cut Holes: 1.5"-42" (38-1067 mm)

Height: 37.5" (953 mm)

Net Weight: 210 lbs. (95.3 kg)

Shipping weight: 290 lbs. (132 kg)

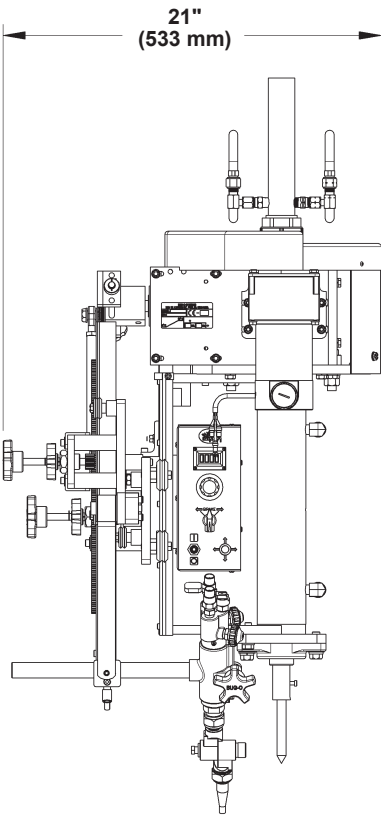
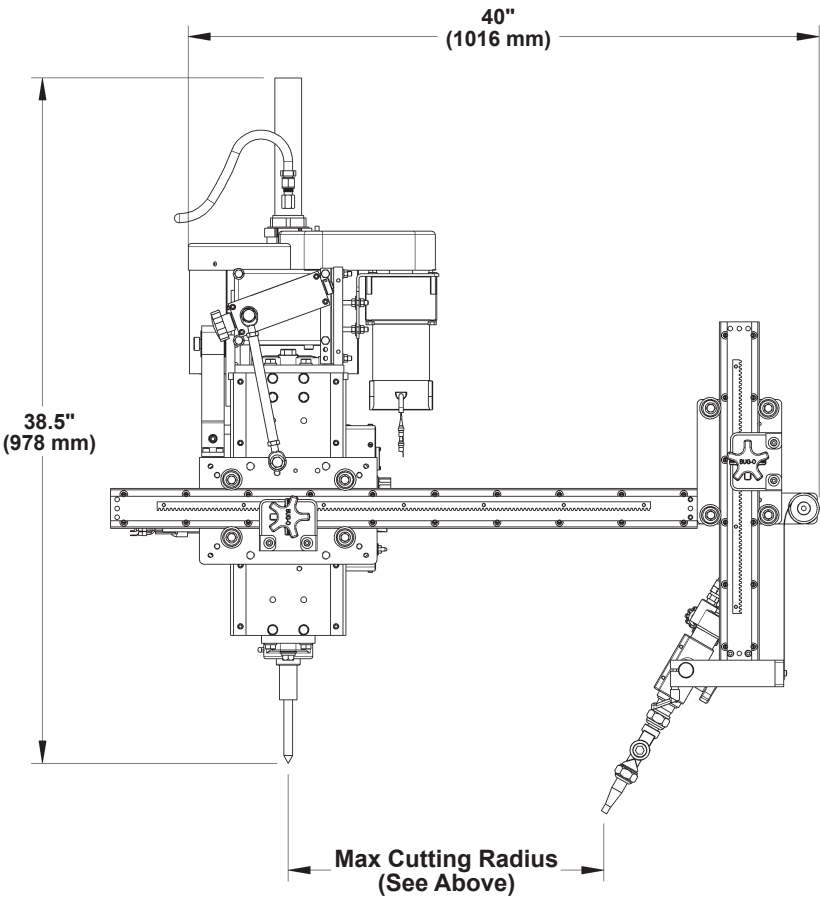
DIMENSIONS:



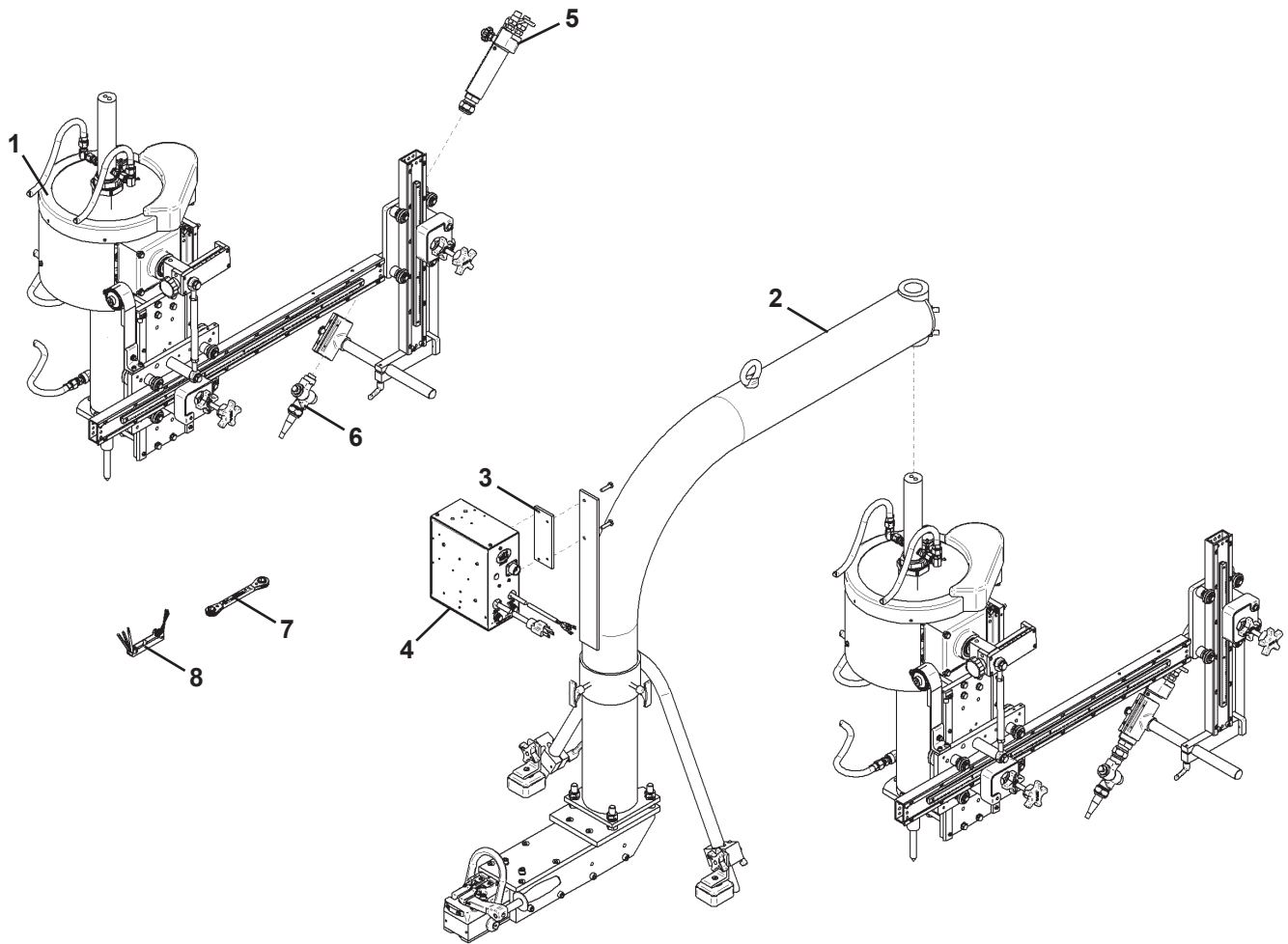
TECHNICAL DATA: (CB-3 CIRCLE BURNER)

- Rotation speed:** 0.1-2 r.p.m.
- Cam Range:** 0-7" (0-178 mm)
- Cutting Diameter:** **For Square Cut Holes:** 4"-48" (102-1219 mm)
For Bevel Cut Holes: 1.5"-42" (38-1067 mm)
- Height:** 38.5" (978 mm)
- Net Weight:** 125 lbs. (56.7 kg)
- Shipping weight:** 230 lbs. (104 kg)

DIMENSIONS:



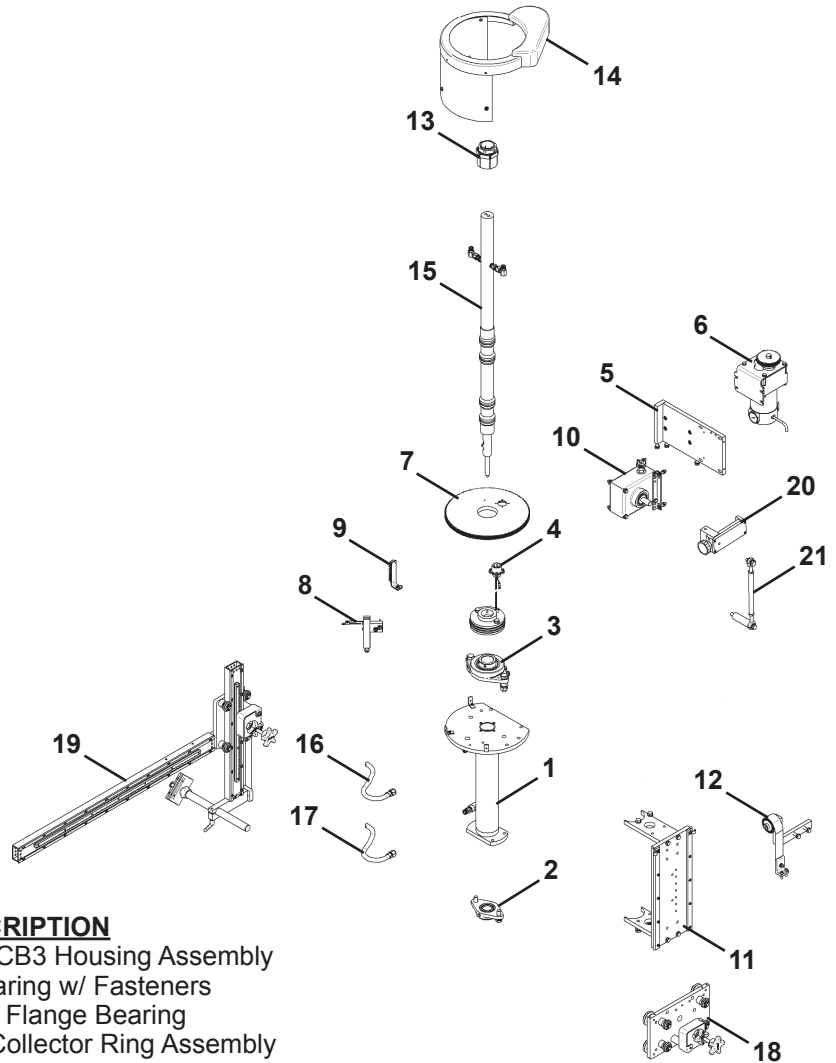
CBO-2000 CBO-2002 CB-2 CIRCLE BURNER / EXPLODED VIEW / PARTS LIST



<u>ITEM</u>	<u>QTY</u>	<u>PART NO.</u>	<u>DESCRIPTION</u>
1	1	100-0437	CB2, CB3 COM Group
2	1	CBO-3073	CB2 Frame
3	1	CWO-6100-K	Rotation Control
4	1	CWO-6210	Rotation Control Box
5	1	BUG-1298	2-Hose Mach. Torch 4" 2
6	1	BUG-1259	Adj. Tip Adaptor
7	1	BUG-9448	1/2" Wrench
8	1	BUG-9449	Hex Key Kit Special
*	1	BUG-1252-2	Acetylene Tips
*	3	PWS-1086	High Strength Zip Tie

*Not Shown

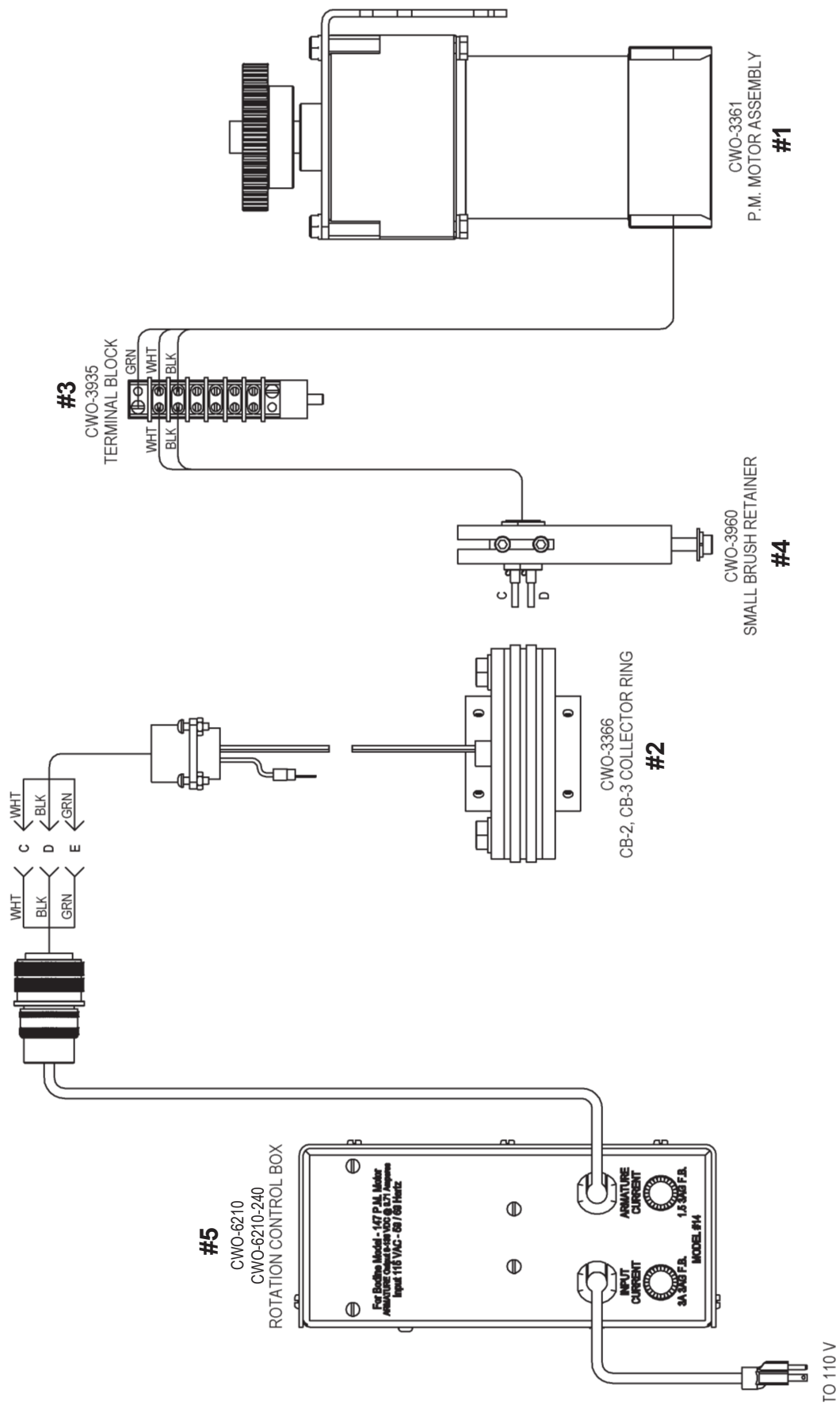
100-0437 CB2, CB3 COM GROUP / EXPLODED VIEW / PARTS LIST



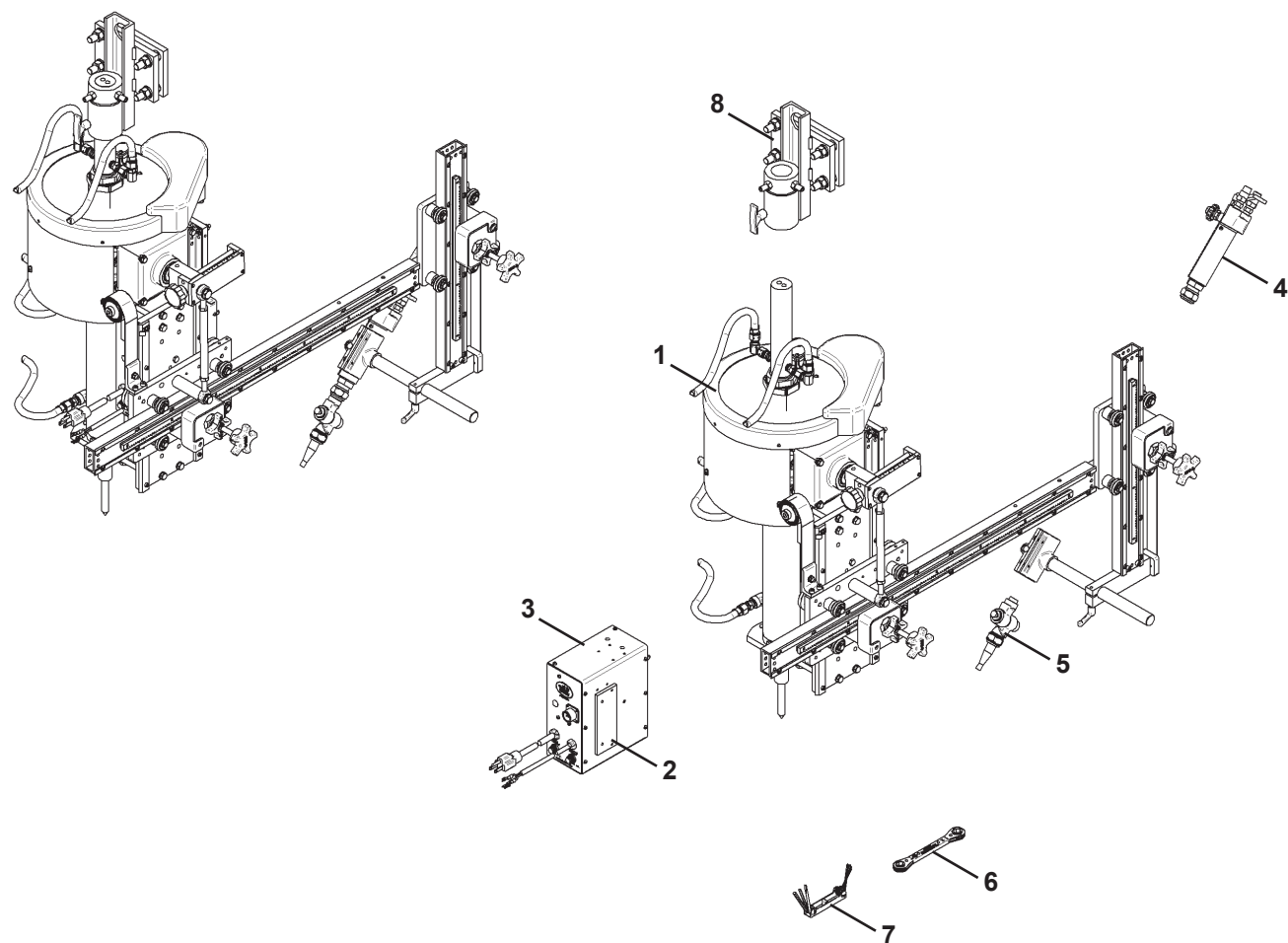
ITEM	QTY	PART NO.	DESCRIPTION
1	1	CWO-3193	CB2, CB3 Housing Assembly
2	1	CWO-4050	1" Bearing w/ Fasteners
3	1	CWO-4340	1-1/2" Flange Bearing
4	1	CWO-3366	CB2 Collector Ring Assembly
5	1	CWO-3358	CB2, CB3 Motor & Transmission Plt Assembly
6	1	CWO-3361	P.M. Motor Assembly #147
7	1	CWO-3445	Top Gear
8	1	CWO-3960	CB2 Small Brush Retainer
9	1	CWO-3935	Terminal Block Assembly
10	1	CWO-3359	Transmission SW 5:1 Assembly
11	1	CWO-3920	Slide Bar Mounting Assembly
12	1	CWO-4910	16.5# Load Spring Assembly
13	1	CWO-5074	1-1/2" I.D. Trantorque
14	1	CWO-3137	CB2 Plastic Guard Assembly
15	1	CWO-3501	CB2, CB3 Shaft Assembly
16	2	CWO-3997	28" Fuel Hose Assembly
17	2	CWO-3996	28" Oxygen Hose Assembly
18	1	CWO-1690	Large Horizontal Racker
19	1	CWO-1635	Racking System
20	1	CWO-3205-11	5" Cam Assembly
21	1	CWO-3425	CB2, CB3 Camshaft & Spacer Assembly
*	1	CIR-1012	Hose Nut
*	2	CIR-1013	Hose Nipple
*	1	CIR-1014	Hose Nut
*	2	CIR-1016	Hose Clamp
*	2	CWO-5411	Bug-O Decal Lg
*	1	CWO-5413	Bug-O Decal

*Not Shown

CBO-2000 CBO-2002 CB-2 CIRCLE BURNER / WIRING DIAGRAM

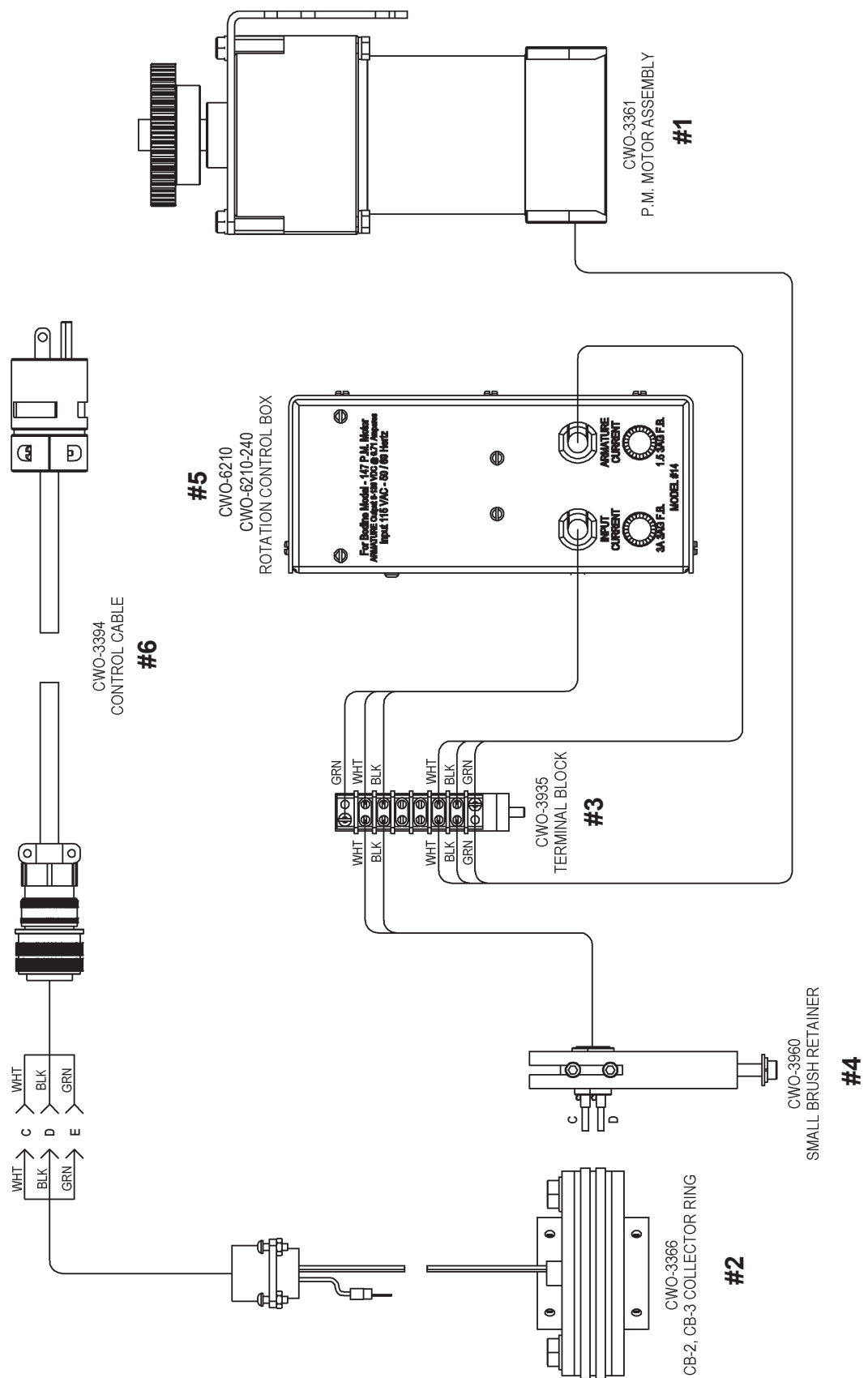


CBO-3000 CBO-3002 CB-3 CIRCLE BURNER / EXPLODED VIEW / PARTS LIST



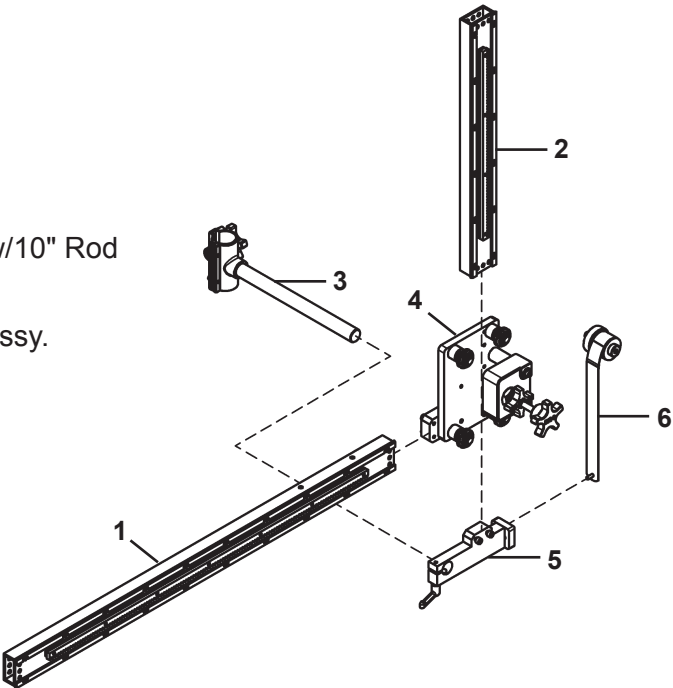
ITEM	QTY	PART NO.	DESCRIPTION
1	1	100-0437	CB2, CB3 COM Group
2	1	CWO-6110-K	Rotation Control
3	1	CWO-6210	Rotation Control Box
4	1	BUG-1298	2-Hose Mach. Torch 4" 2
5	1	BUG-1259	Adjustable Tip Adaptor
6	1	BUG-9448	1/2" Wrench
7	1	BUG-9449	Hex Key Special
8	1	CWO-3744	Manipulator Bracket
*	1	BUG-1252-2	Acetylene Tips
*	1	CWO-3394	Control Cable Assembly

CBO-3000 CBO-3002 CB-3 CIRCLE BURNER / WIRING DIAGRAM



CWO-1635 RACKING SYSTEM CB-2, CB-3 / EXPLODED VIEW / PARTS LIST

ITEM	QTY	PART NO.	DESCRIPTION
1	1	ABR-1060	V-Guide Ways 33"
2	1	ABR-1070	V-Guide Ways 19"
3	1	BUG-5188-10	Torch Holder Assy. w/10" Rod
4	1	CWO-1675	Vertical Racker
5	1	CWO-1695	Attachment Block
6	1	CWO-3450	10.6# Load Spring Assy.

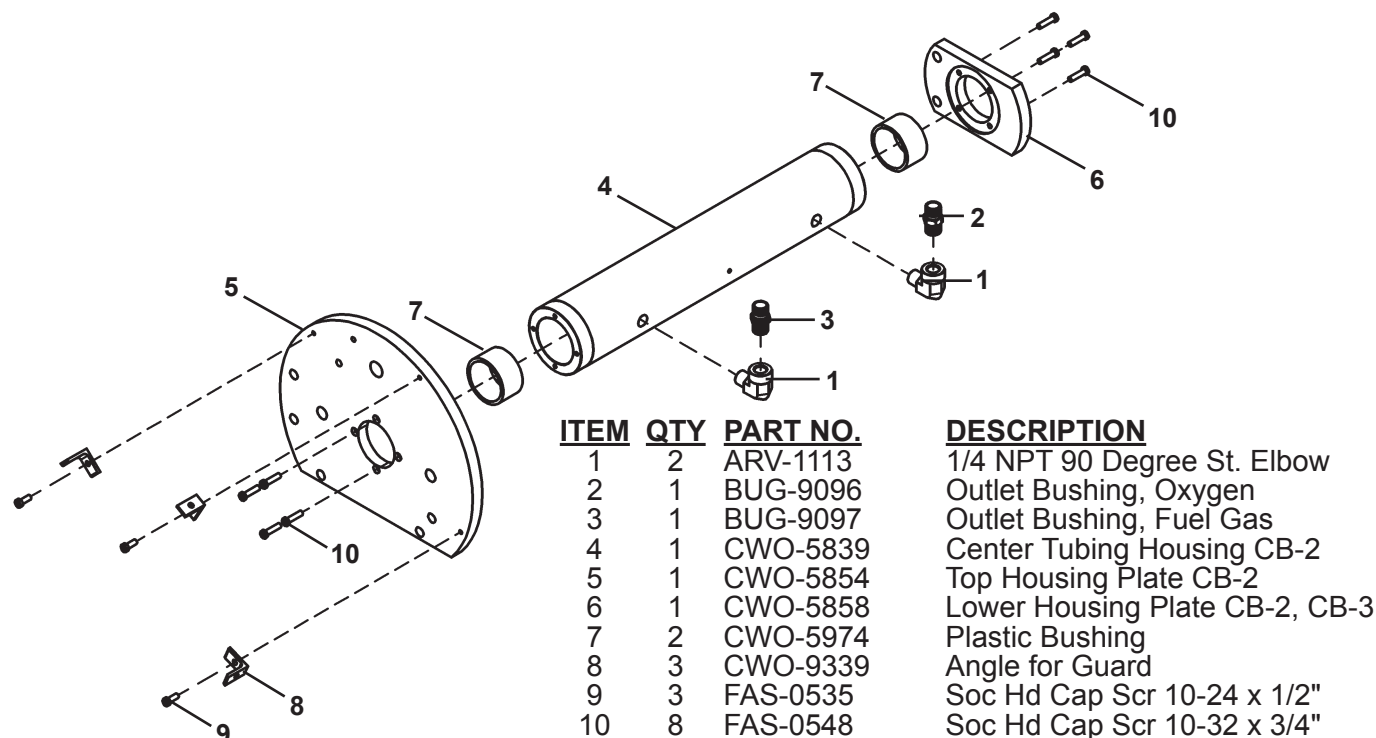


CWO-1690 LARGE HORIZONTAL RACKER / EXPLODED VIEW / PARTS LIST

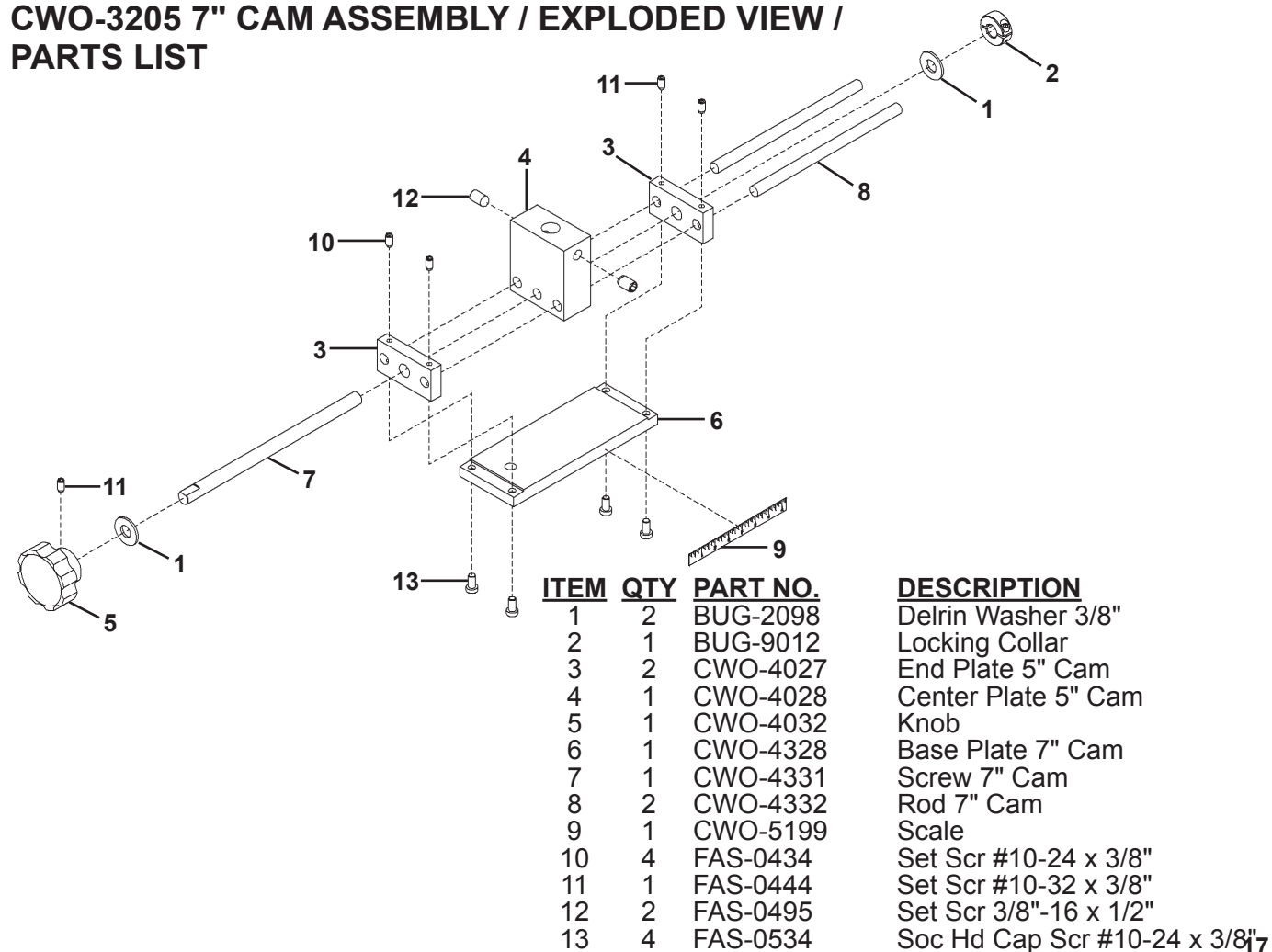
ITEM	QTY	PART NO.	DESCRIPTION
1	1	BUG-2032	Knob, Black
2	1	CWO-1678	Racker Plate
3	1	CWO-1679	Pinion 11T
4	2	CWO-1680	W2 Fixed Leg & Wheel Assy.
5	2	CWO-1681	W2 Adj. Leg & Wheel Assy.
6	1	CWO-1687	Mount Plate (Large Racker)
7	2	CWO-4326	Fixed Leg & Wheel Assy.
8	2	CWO-4326	Adj. Leg & Wheel Assy.
9	2	FAS-0557	Soc Hd Cap Scr 1/4-20 x 3/4"
10	1	FAS-1307	Hex Jam Nut 3/4-16
11	1	MUG-1141	Bearing Collet
12	1	MUG-1142	Knob, Locking
13	1	MUG-1144	Shaft
14	2	MUG-1453	Stand-Off
15	1	MUG-1579	Retaining Ring
16	3	WAS-0204	1/4" SAE Washer
17	1	CWO-1671	Racker Shield
18	2	FAS-0559	Soc Hd Cap Scr 1/4-20 x 1"

A = Adjustable Leg & Wheel Assembly
F = Fixed Leg & Wheel Assembly

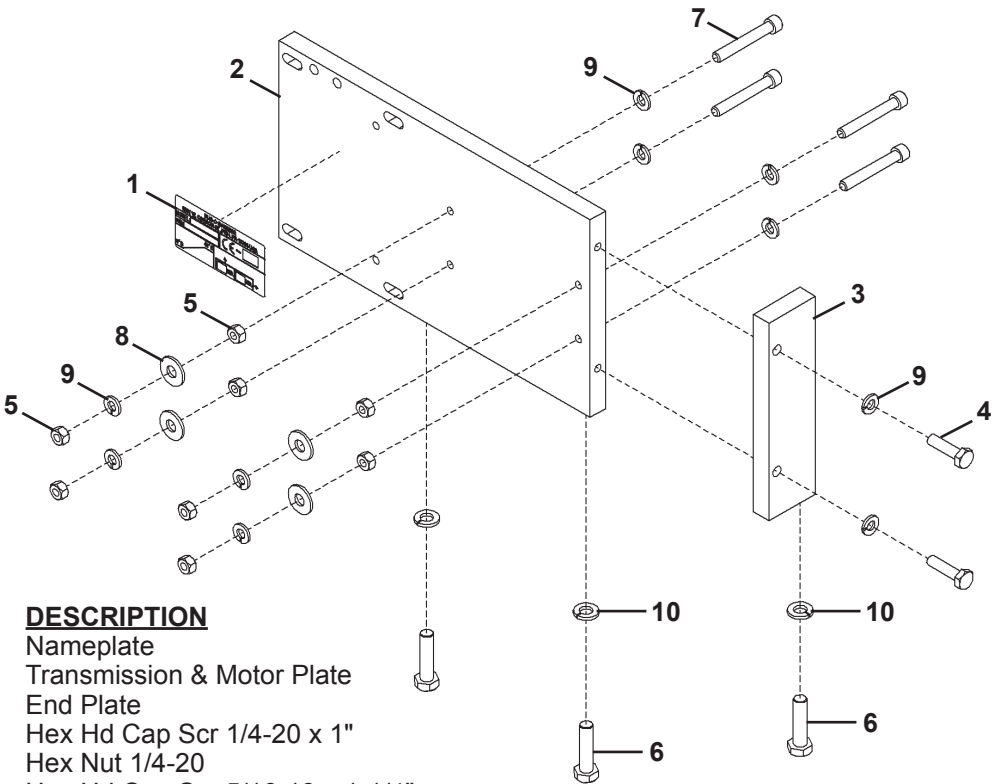
CWO-3193 CB-2, CB-3 HOUSING ASSEMBLY / EXPLODED VIEW / PARTS LIST



CWO-3205 7" CAM ASSEMBLY / EXPLODED VIEW / PARTS LIST

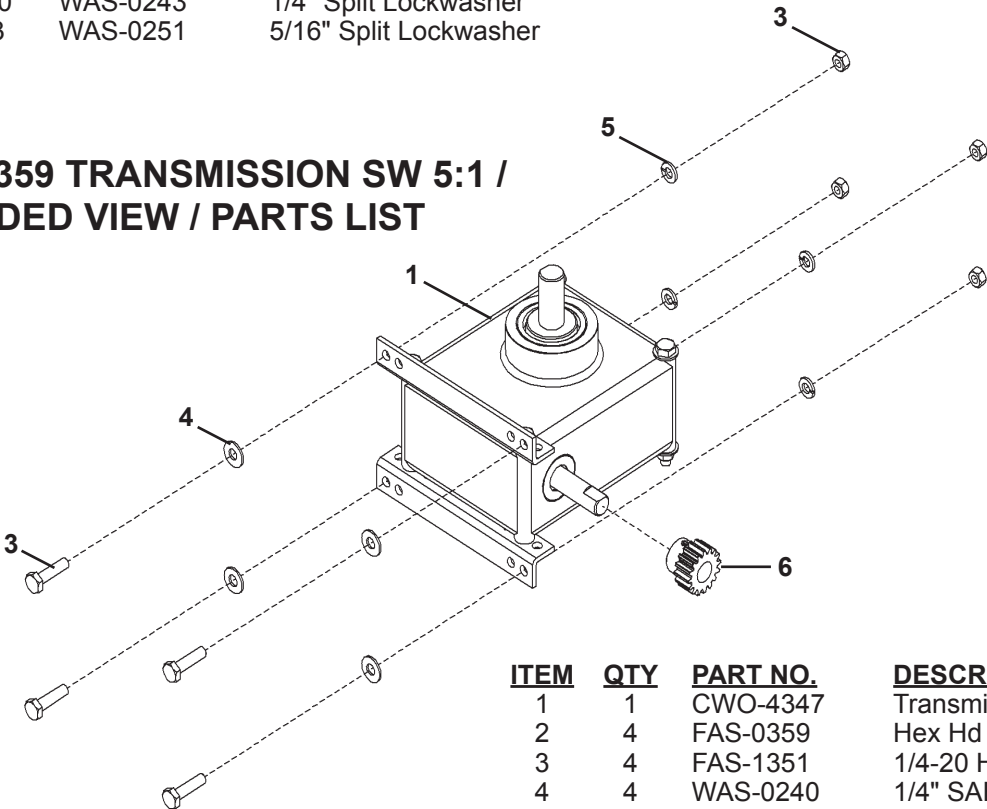


CWO-3358 CB-2, CB-3 MOTOR & TRANSMISSION PLATE / EXPLODED VIEW / PARTS LIST



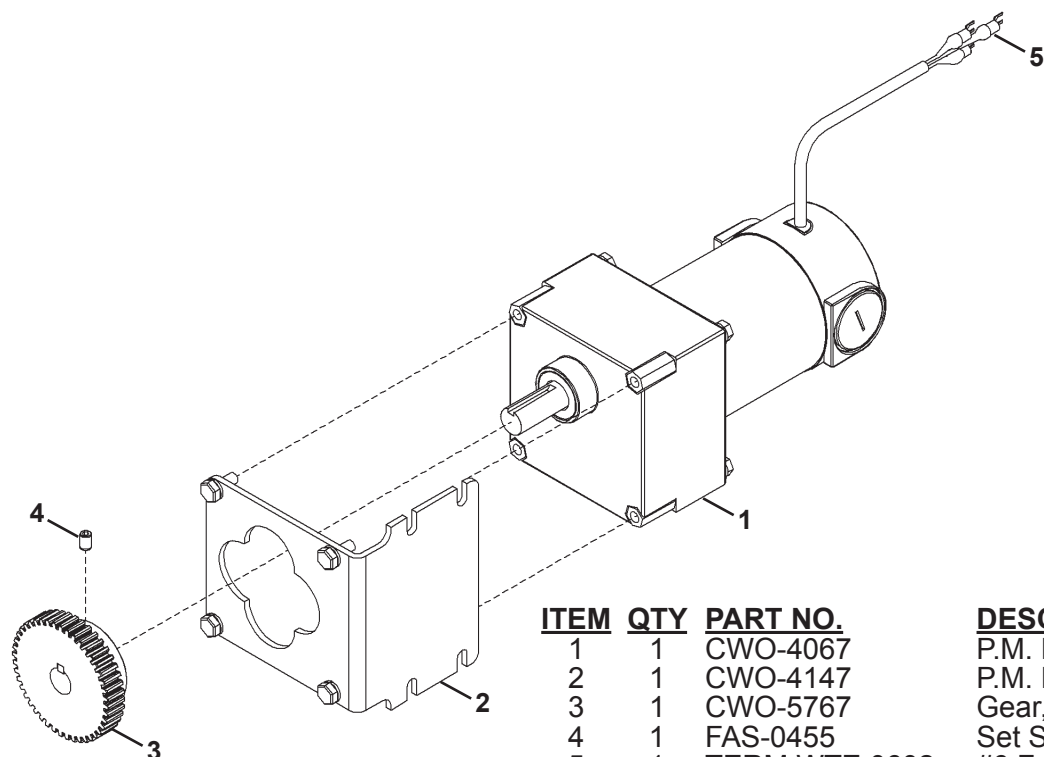
ITEM	QTY	PART NO.	DESCRIPTION
1	1	BUG-1338	Nameplate
2	1	CWO-5885	Transmission & Motor Plate
3	1	CWO-5886	End Plate
4	2	FAS-0359	Hex Hd Cap Scr 1/4-20 x 1"
5	8	FAS-1351	Hex Nut 1/4-20
6	3	FAS-2372	Hex Hd Cap Scr 5/16-18 x 1-1/4"
7	4	FAS-2554	Soc Hd Cap Scr 1/4-20 x 1-3/4"
8	4	WAS-0241	1/4" USS Zinc Flat Washer
9	10	WAS-0243	1/4" Split Lockwasher
10	3	WAS-0251	5/16" Split Lockwasher

CWO-3359 TRANSMISSION SW 5:1 / EXPLODED VIEW / PARTS LIST



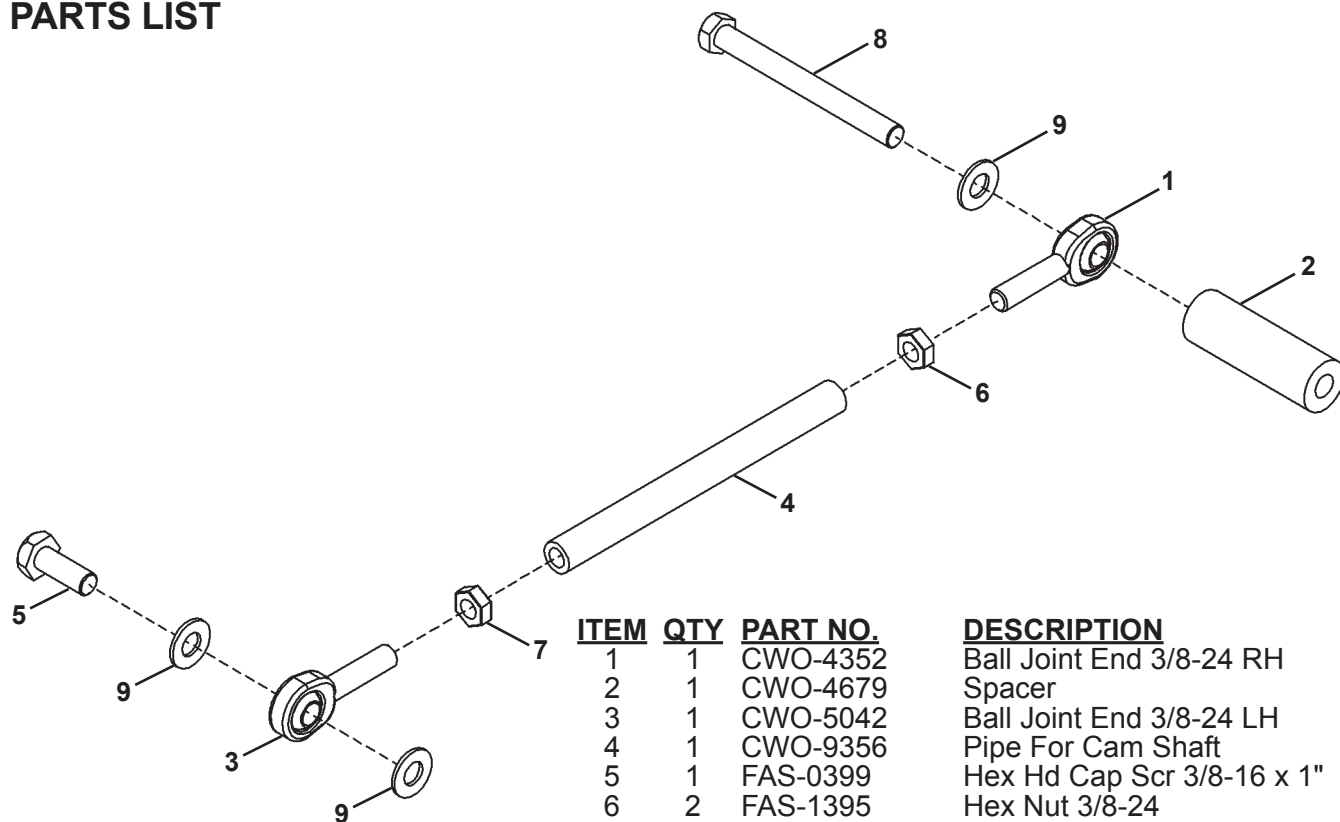
ITEM	QTY	PART NO.	DESCRIPTION
1	1	CWO-4347	Transmission 5:1
2	4	FAS-0359	Hex Hd Cap Scr 1/4-20 x 1"
3	4	FAS-1351	1/4-20 Hex Nut
4	4	WAS-0240	1/4" SAE Washer
5	4	WAS-0243	1/4" Lock Washer
6	1	UNI-1024	Slave Pinion

CWO-3361 P.M. MOTOR ASSEMBLY / EXPLODED VIEW / PARTS LIST



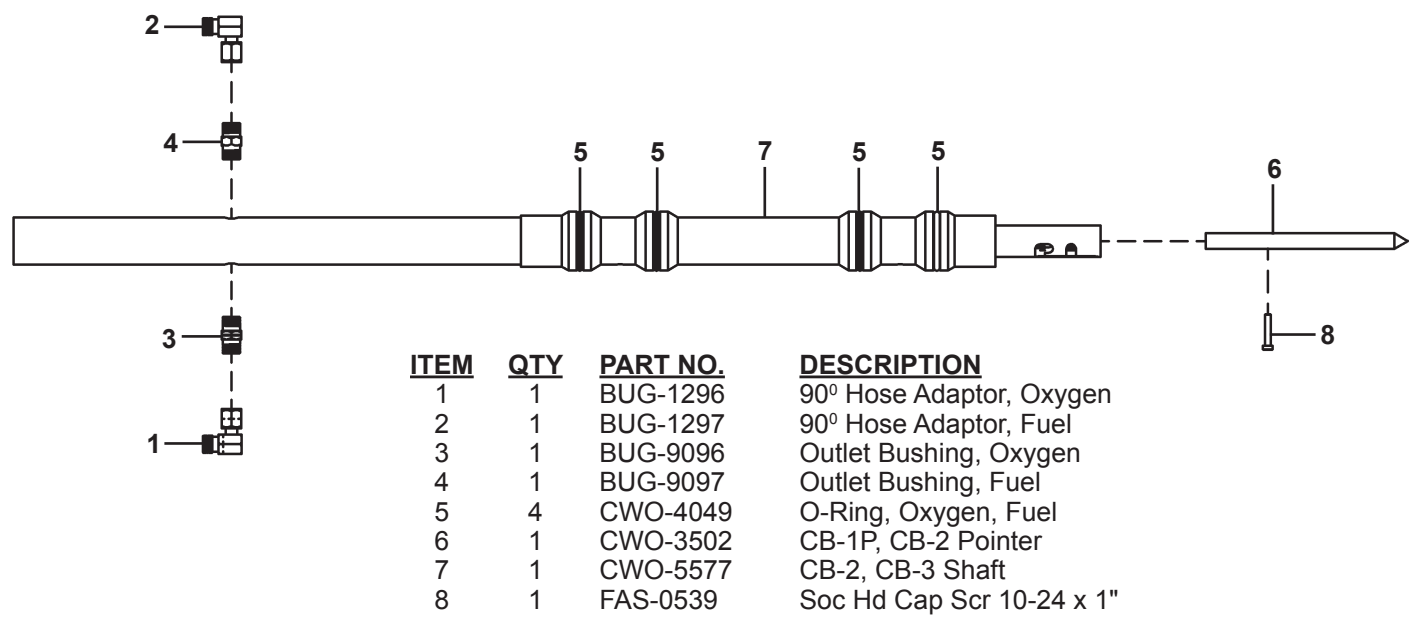
ITEM	QTY	PART NO.	DESCRIPTION
1	1	CWO-4067	P.M. Motor #1072
2	1	CWO-4147	P.M. Motor Bracket #970
3	1	CWO-5767	Gear, P.M. Motor #147
4	1	FAS-0455	Set Scr 1/4-20 x 1/2 Cup Point
5	1	TERM WTE 0602	#6 Fork Blue

CWO-3425 CB-2, CB-3 CAMSHAFT & SPACER ASSEMBLY / EXPLODED VIEW / PARTS LIST

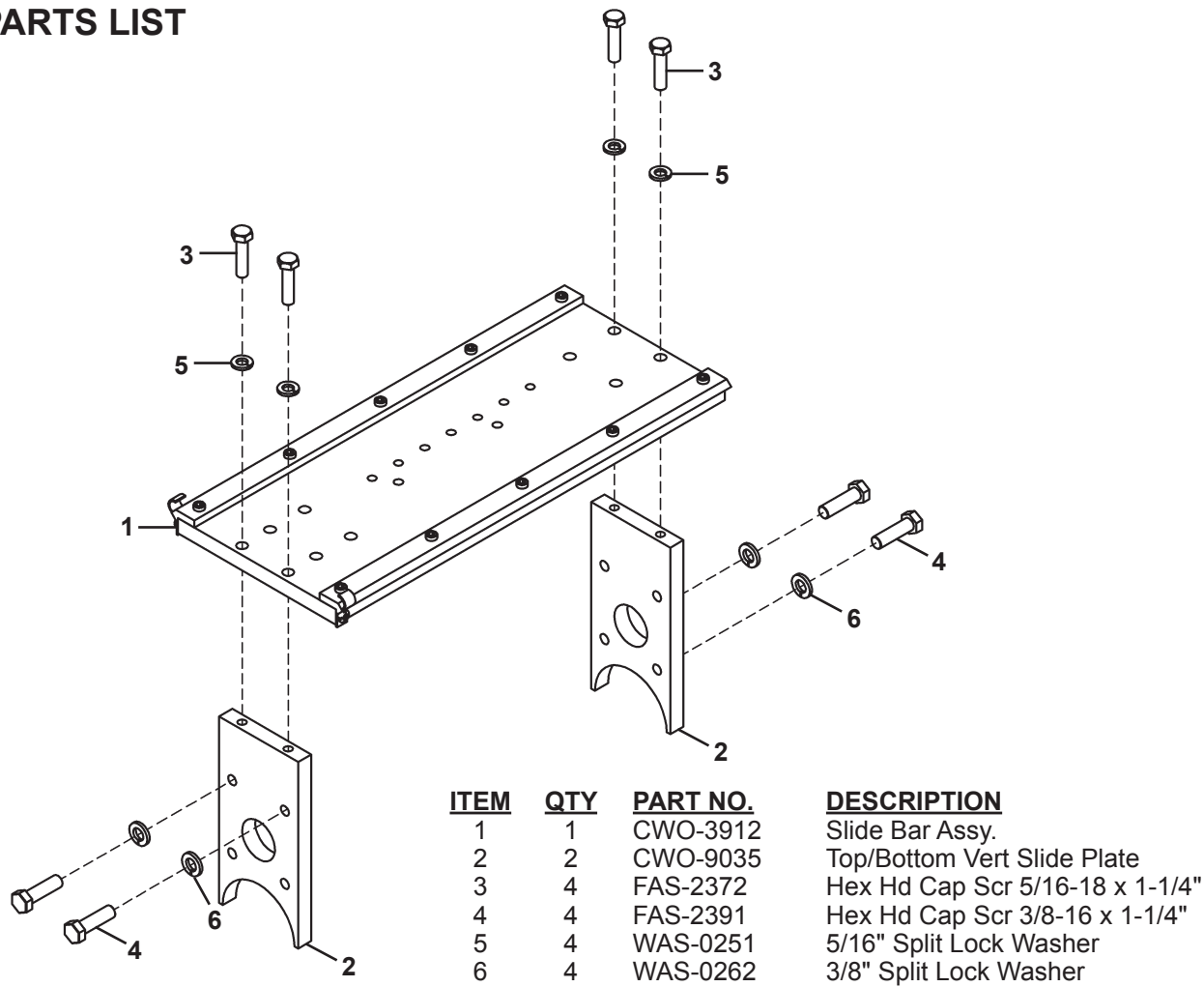


ITEM	QTY	PART NO.	DESCRIPTION
1	1	CWO-4352	Ball Joint End 3/8-24 RH
2	1	CWO-4679	Spacer
3	1	CWO-5042	Ball Joint End 3/8-24 LH
4	1	CWO-9356	Pipe For Cam Shaft
5	1	FAS-0399	Hex Hd Cap Scr 3/8-16 x 1"
6	2	FAS-1395	Hex Nut 3/8-24
7	1	FAS-1396	Hex Nut 3/8-24 Left Handed
8	1	FAS-2401	Hex Hd Cap Scr 3/8-16 x 3-3/4"
9	3	WAS-0260	3/8" SAE Washer

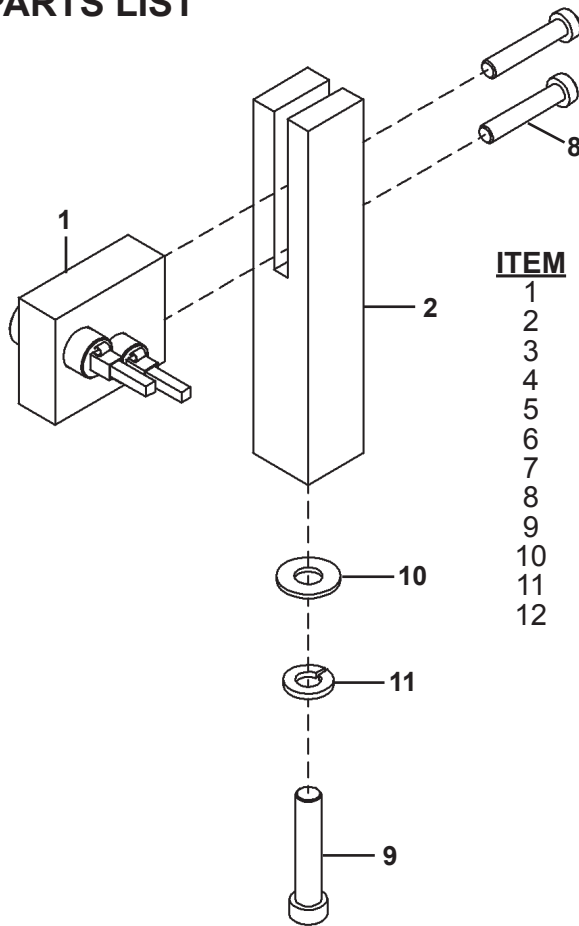
CWO-3501 CB-2, CB-3 SHAFT ASSEMBLY / EXPLODED VIEW / PARTS LIST



CWO-3920 SLIDE BAR MOUNTING ASSEMBLY / EXPLODED VIEW / PARTS LIST

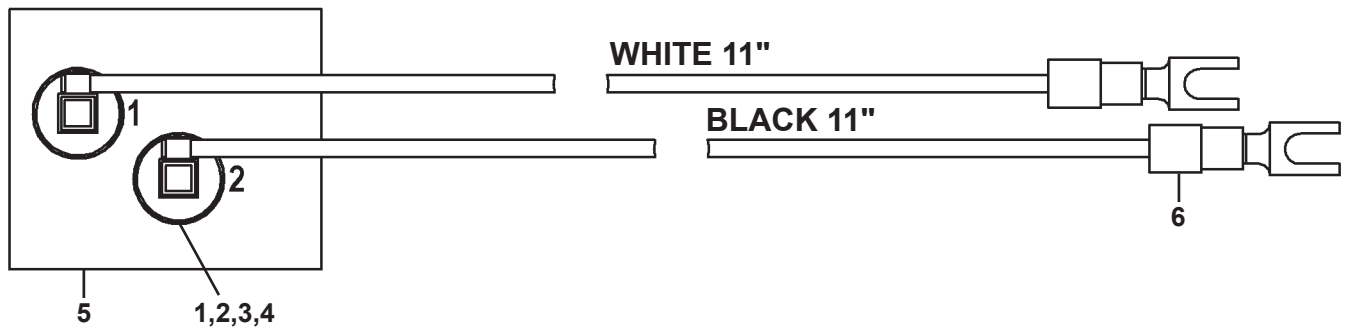


CWO-3960 CB-2, CB-3 SMALL BRUSH ASSEMBLY / EXPLODED VIEW / PARTS LIST



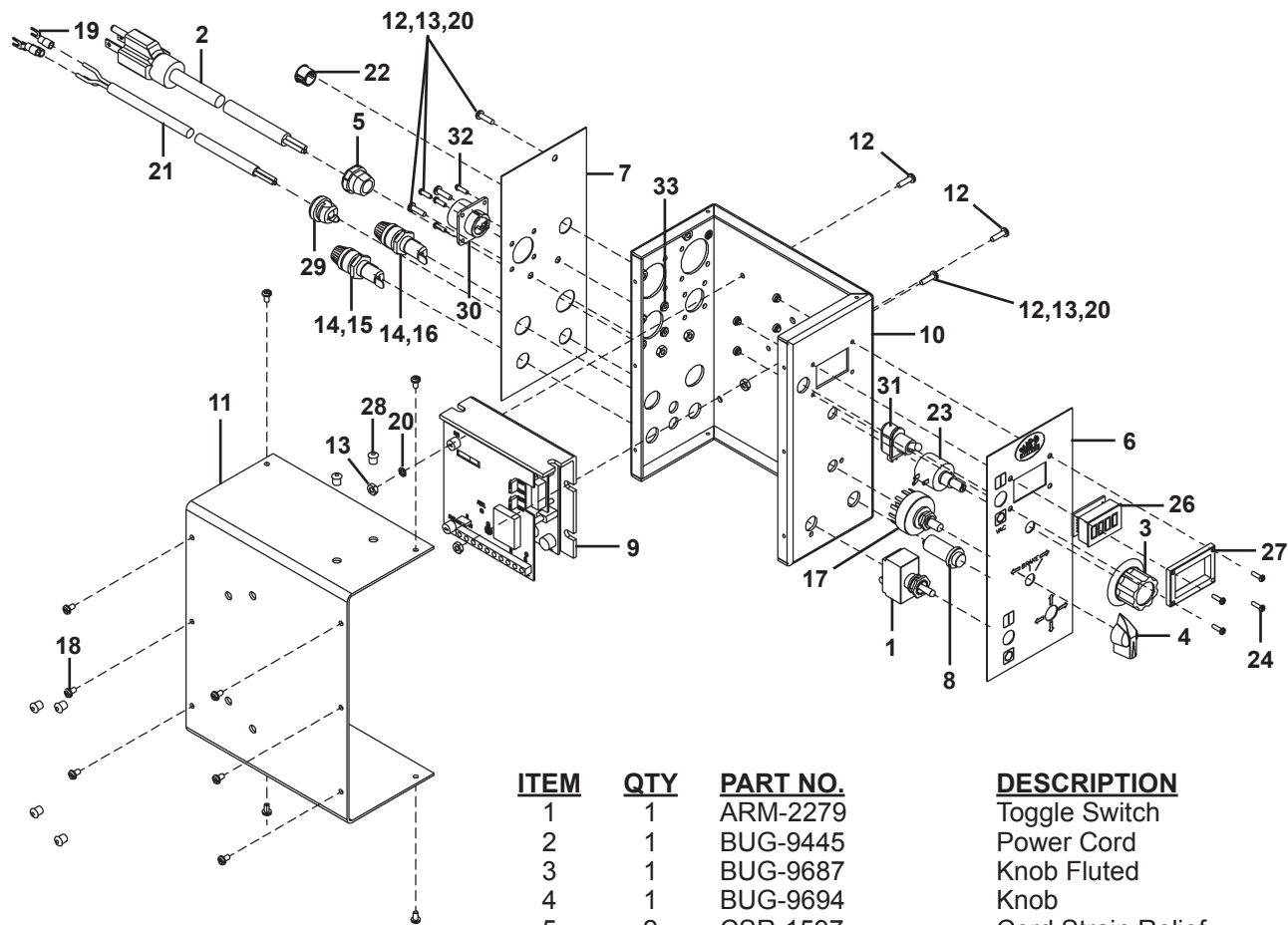
<u>ITEM</u>	<u>QTY</u>	<u>PART NO.</u>	<u>DESCRIPTION</u>
1	1	CWO-3961	CB-2 Small Retainer Block
2	1	CWO-9076	Small Retainer Support
3	2	CWO-5831	1/8" x 1/8" x 7/8" Brush
4	2	CWO-5874	1/8" Brush Holder
5	2	CWO-5875	Cap
6	2	CWO-5876	Clip
7	1	CWO-9108	CB-2 Small Brush Block
8	2	FAS-0539	Soc Hd Cap Scr 10-24 x 1"
9	1	FAS-2551	Soc Hd Cap Scr 1/4-20 x 1-1/4"
10	1	WAS-0240	1/4" SAE Washer
11	1	WAS-0243	1/4" Split Lock Washer
12	2	TERM WTE-0602	#6 Fork Blue

CWO-3961 CB-2, CB-3 SMALL RETAINER BLOCK / DETAIL VIEW



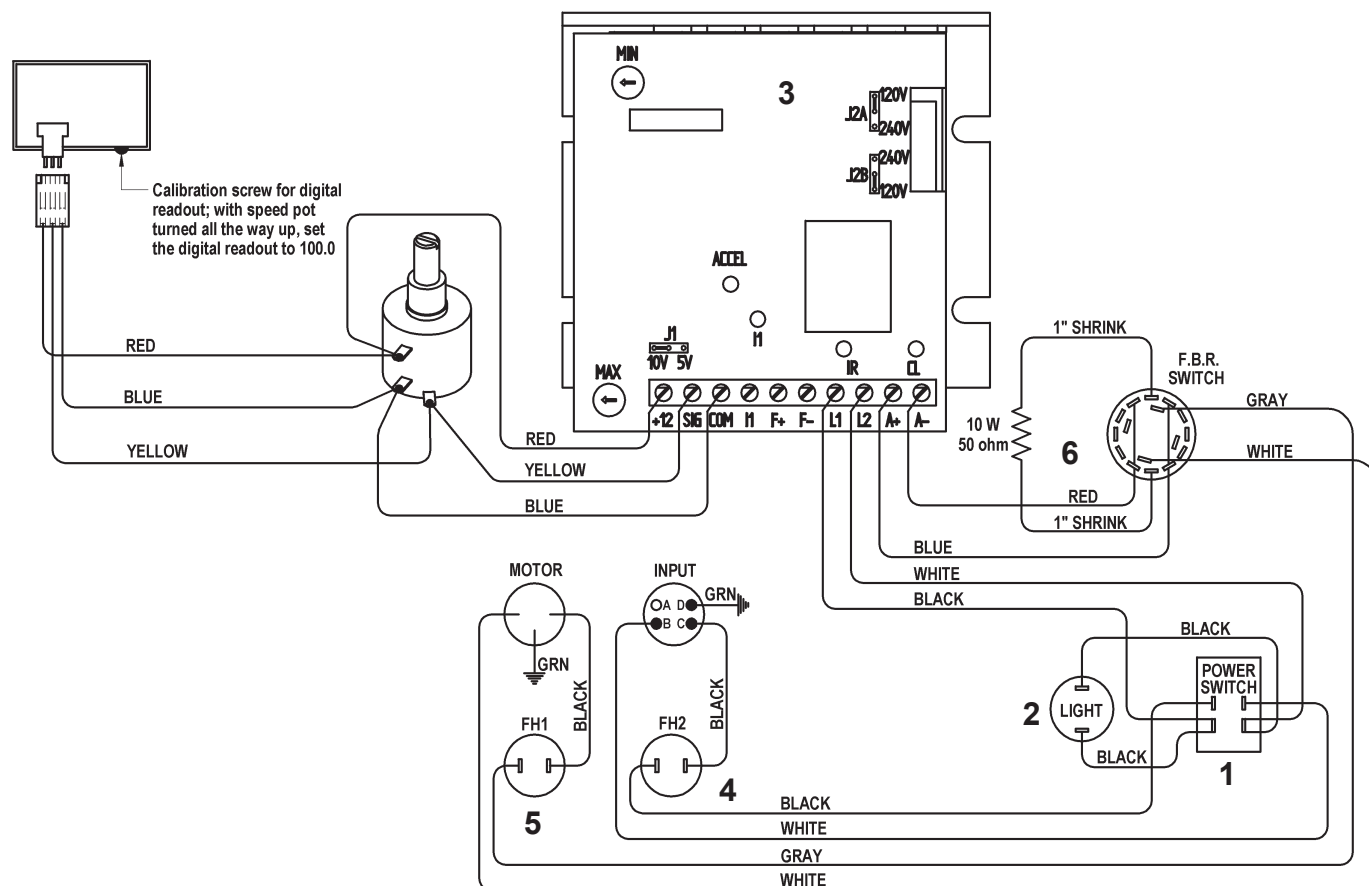
<u>ITEM</u>	<u>QTY</u>	<u>PART NO.</u>	<u>DESCRIPTION</u>
1	2	CWO-5831	1/8" x 1/8" x 7/8" Brush
2	2	CWP-5874	1/8" Brush Holder
3	2	CWP-5875	Cap
4	2	CWO-5876	Clip
5	1	CWO-9108	CB-2 Small Brush Block
6	2	TERM WTE 0602	Fork Blue

CWO-6210 ROTATION CONTROL / EXPLODED VIEW / PARTS LIST



ITEM	QTY	PART NO.	DESCRIPTION
1	1	ARM-2279	Toggle Switch
2	1	BUG-9445	Power Cord
3	1	BUG-9687	Knob Fluted
4	1	BUG-9694	Knob
5	2	CSR-1597	Cord Strain Relief
6	1	CWO-6216	Rotation Box Front Panel
7	1	CWO-5547B	Rotation Box Rear Panel
8	1	CWO-6206	Indicator Light
9	1	CWO-6527	0-90V Spd Ctrl w. Isolator
10	1	CWO-6839	Rotation Control Case
11	1	CWO-6802	Rotation Box Cover
12	6	FAS-0115	#6-32 x 1/2" Pan Head Zinc
13	6	FAS-1310	Hex Nut 6-32
14	2	FHO-0188	Fuse Holder
15	1	MPD-1026	Fuse 2 Amp
16	1	FUS-0257	Fuse 3 Amp
17	1	MUG-1258-1	Rotary Switch Assembly
18	10	SCW-WTE-0264	#6-32 x 1/4" Sht Mt Scr
19	3	TERM-WTE-0197	#6 Red Fork
20	6	WAS-0211	#6 Internal Star Washer
21	42"	WRE-WTE-0501	18/3 SJO 300V Cord
22	1	MUG-1589	Hole Plug .500"
23	1	BUG-1562	Multi-turn Potentiometer
24	4	FAS-0104	#4-40 X 3/8" Pan Hd
25	4	SCF-1001	#4-40 Self Clinching Nut
26	1	BUG-1764	Meter Display Board
27	1	MDS-1011	Display Bezel
28	6	BUG-3331	Hole Plug 1/4"
29	1	CSR-1598	Cord Strain Relief Bushing
30	1	BUG-9486	Panel Connector, 2T, M
31	1	ABP-1069	Toggle Switch, SPST
32	4	FAS-0204	Rmd Slit Jd Scr 4-40 x 3/8" Zinc
33	4	FAS-1305	Hex Nut 4-40

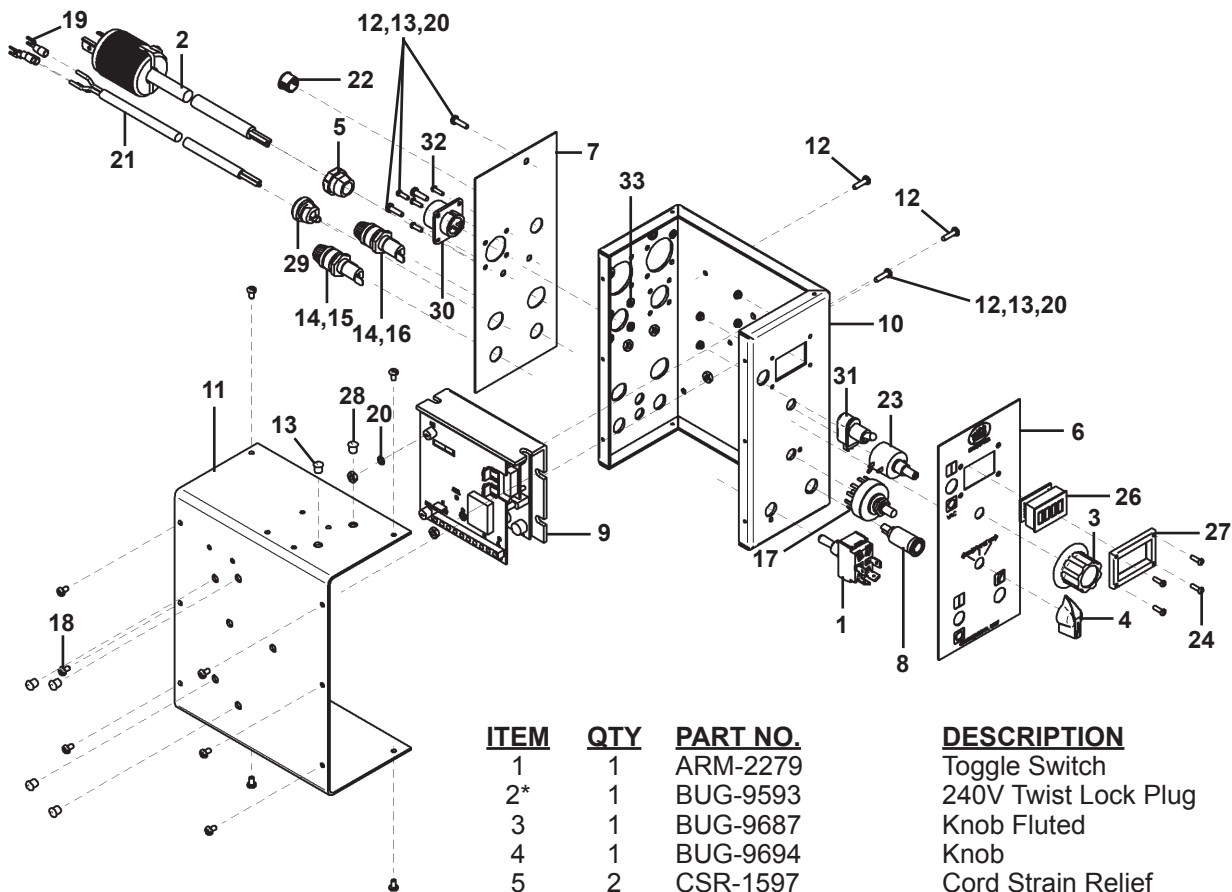
ROTATION CONTROL / WIRING DIAGRAM / ELECTRICAL COMPONENT CHART



--- = INDICATES ITEMS THAT ARE SUPPLIED TOGETHER.

ELECTRICAL COMPONENT CHART		
ITEM	DESCRIPTION	PART NO.
1	Toggle Switch	ARM-2279
2	Red Neon Lamp	CWO-6206
3	Speed Control Board w/Resistor	CWO-6525
4	Fuse 2 amp	MPD-1026
5	Fuse 3 amp	FUS-0257
6	Rotary Switch	MUG-1258-1

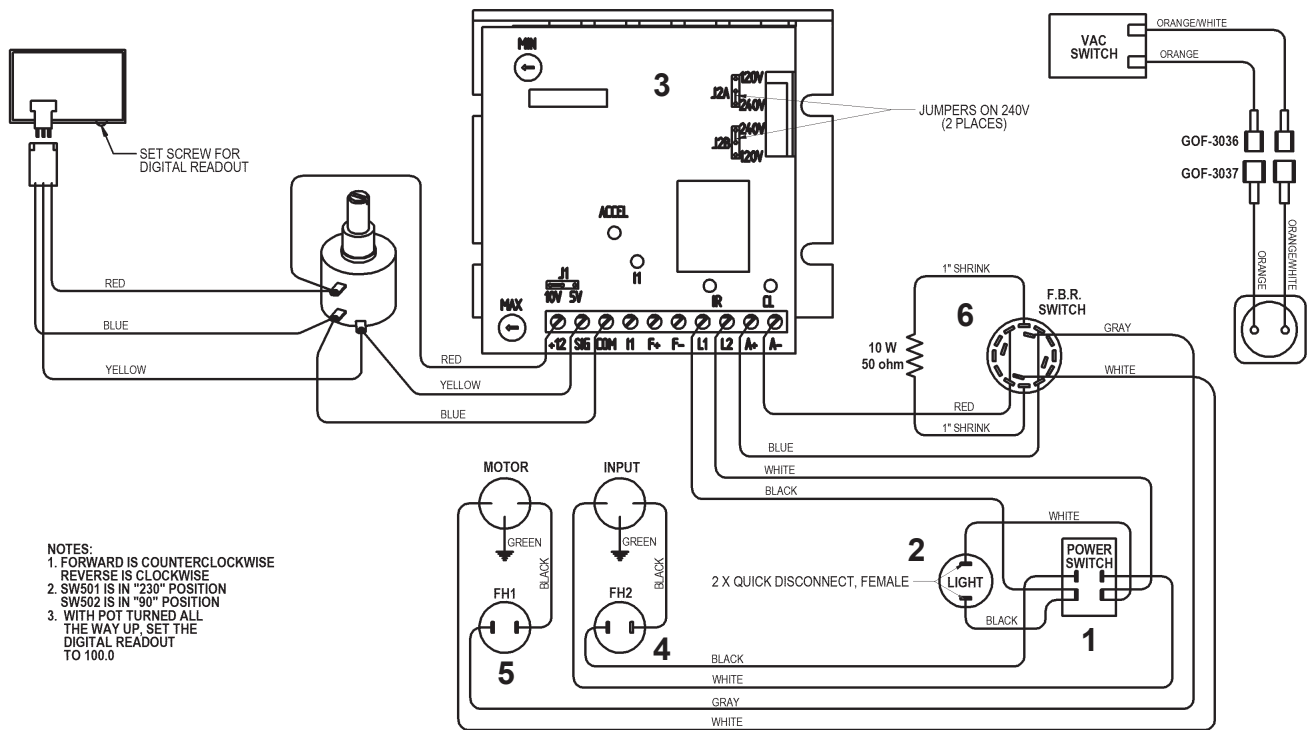
CWO-6210-240 ROTATION CONTROL / EXPLODED VIEW / PARTS LIST



ITEM	QTY	PART NO.	DESCRIPTION
1	1	ARM-2279	Toggle Switch
2*	1	BUG-9593	240V Twist Lock Plug
3	1	BUG-9687	Knob Fluted
4	1	BUG-9694	Knob
5	2	CSR-1597	Cord Strain Relief
6	1	CWO-6216	Rotation Box Front Panel
7	1	CWO-5547B	Rotation Box Rear Panel
8	1	BUG-1428	Red 240V Pilot Light
9	1	CWO-6527	0-90V Spd Ctrl w. Isolator
10	1	CWO-6839	Rotation Control Case
11	1	CWO-6802	Rotation Box Cover
12	6	FAS-0115	#6-32 x 1/2" Pan Head Zinc
13	6	FAS-1310	Hex Nut 6-32
14	2	FHO-0188	Fuse Holder
15	1	MPD-1026	Fuse 2 Amp
16	1	FUS-0257	Fuse 3 Amp
17	1	MUG-1258-1	Rotary Switch Assembly
18	10	SCW-WTE-0264	#6-32 x 1/4" Sht Mt Scr
19	3	TERM-WTE-0197	#6 Red Fork
20	6	WAS-0211	#6 Internal Star Washer
21	42"	WRE-WTE-0501	18/3 SJO 300V Cord
22	1	MUG-1589	Hole Plug .500"
23	1	BUG-1562	Multi-turn Potentiometer
24	4	FAS-0401	#4-40 X 3/8" Pan Hd
25	4	SCF-1001	#4-40 Self Clinching Nut
26	1	BUG-1764	Meter Display Board
27	1	MDS-1011	Display Bezel
28	6	BUG-3331	Hole Plug 1/4"
29	1	CSR-1598	Cord Strain Relief Bushing
30	1	BUG-9486	Panel Connector, 2T, M
31	1	ABP-1069	Toggle Switch, SPST
32	4	FAS-0204	Rmd Slit Jd Scr 4-40 x 3/8" Zinc
33	4	FAS-1305	Hex Nut 4-40

*Power cord has CON-PE05F connector attached

CWO-6210-240-WD ROTATION CONTROL / WIRING DIAGRAM

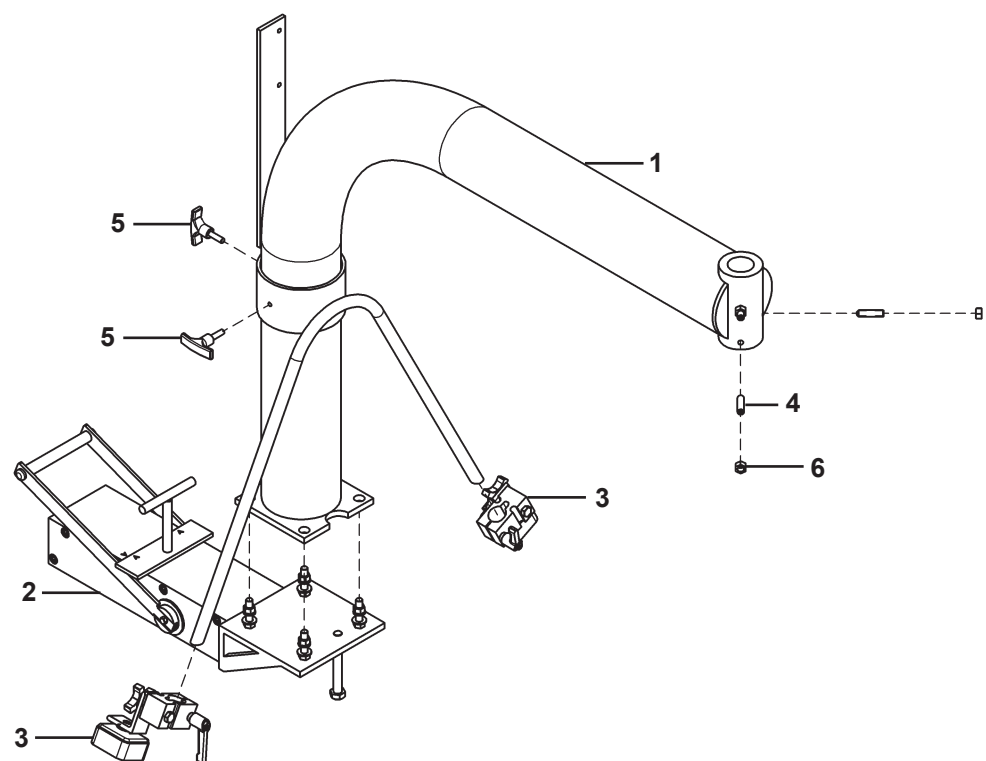


--- = INDICATES ITEMS THAT ARE SUPPLIED TOGETHER

ELECTRICAL COMPONENT CHART

ITEM	DESCRIPTION	PART NO.
1	Toggle Switch	ARM-2279
2	Red Neon Lamp	CWO-6206
3	Speed Control Board w/Resistor	CWO-6527
4	Fuse 1.5 amp	FUS-0190
5	Fuse 3 amp	FUS-0257
6	Rotary Switch	MUG-1258-1

CBO-3073 CB-2 FRAME / EXPLODED VIEW / PARTS LIST

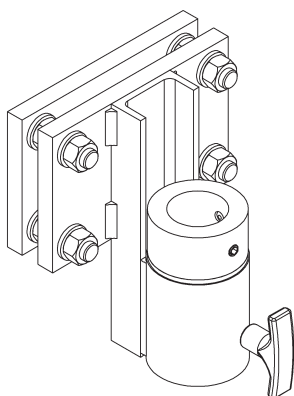


ITEM	QTY	PART NO.	DESCRIPTION
1	1	CBO-3072	Frame Weldment = CB-2 Frame
2	1	CWO-3407	Magnet Assembly / CB-2 Frame
3	2	CWO-3090	Magnet Foot = CB-2 Frame
4	3	FAS-0495	Set Scr 3-8/16x 1-1/2"
5	2	CWO-3777	T-Handle, Knob 5/16-18 x .98"
6	3	FAS-1390	Hex Nut 3/8-16

ACCESSORIES:

CWO-3744 Manipulator Bracket

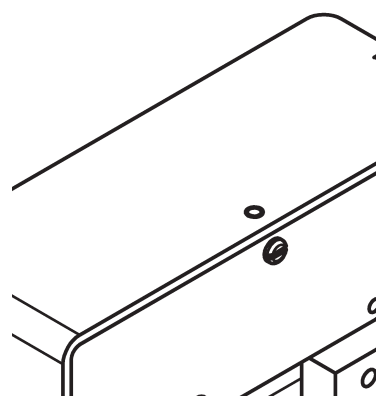
The Manipulator Bracket is a mounting devise that was designed to be used on some Circle Welders and Circle Burners. It attaches to an existing fixture and can be easily adjusted to make sure that the Circle Welder/Burner remains square on the work piece.



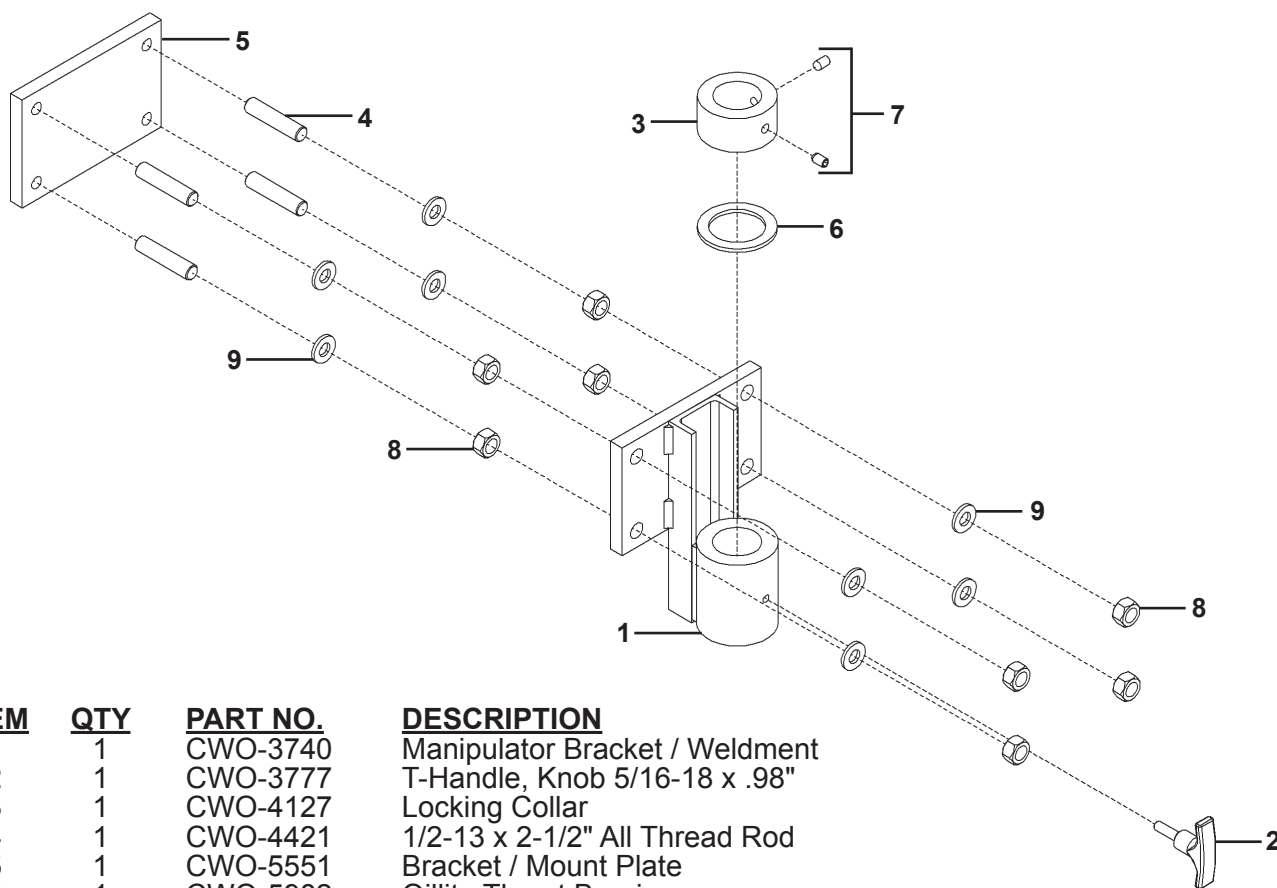
CWO-3895 Hillside Kit

The CWO-3895 Hillside Kit provides a *single* rise and fall motion per revolution of the machine to provide the motion required to follow the contour of an *offset* pipe-to-pipe weld.

During standard operation, the cam mechanism of all Bug-O Circle Welders provide *dual* rise and fall action per revolution to follow the contour of a pipe-to-pipe weld. Once the Hillside Kit is installed on a Bug-O Circle Welder, the operator can easily engage or disengage it to switch between single or dual rise and fall operation.



CWO-3744 MANIPULATOR BRACKET / EXPLODED VIEW / PARTS LIST



ITEM	QTY	PART NO.	DESCRIPTION
1	1	CWO-3740	Manipulator Bracket / Weldment
2	1	CWO-3777	T-Handle, Knob 5/16-18 x .98"
3	1	CWO-4127	Locking Collar
4	1	CWO-4421	1/2-13 x 2-1/2" All Thread Rod
5	1	CWO-5551	Bracket / Mount Plate
6	1	CWO-5982	Oillite Thrust Bearing
7	2	FAS-0495	Set Scr 3/8-16 x 1/2"
8	8	FAS-1301	Hex Nut 1/2-13
9	12	WAS-0280	1/2" Washer

CB-3 & CB-3H CIRCLE BURNER (ONLY) - BURNING HILLSIDE HOLES

I. All CB-3 and CB-3H burning machines have to be fixtured in some manner over the work. This fixturing is normally accomplished by our column and boom or a manipulator.

II. Cam

A. To time the cam after the machine has been attached to the carriage on the column and boom or to the manipulator with the bracket provided take the following steps:

1. If the cam is not in the vertical position with the adjusting knob on top turn on the speed control and rotate the machine to where the cam is in the vertical position with the knob on top.
2. Loosen set screws in the shaft coupling leaving the set screws in the shaft collar on top locked down. Rotate the machine so that the horizontal rack is parallel to the vessel or pipe. This will place the torch on center line and the cam in the vertical position with the adjusting knob on the top. The cam is now in time.

B. The cam is read as follows:

As the knob is turned the cam block moves down where the bottom of the cam block cuts the scale attached to the face of the cam, this is the amount of cam action that has been dialed into the cam.

C. See page 6 "Rise and Fall of the Cam" for additional information.

III. Changing from on center line cutting to hillside burning

A. Remove hair pin from 1/2" round and remove 1/2" pin, insert 1/2" pin into hole marked hillside and replace hair pin. To go back to on center line burning reverse this process.

IV. Burning hillside holes

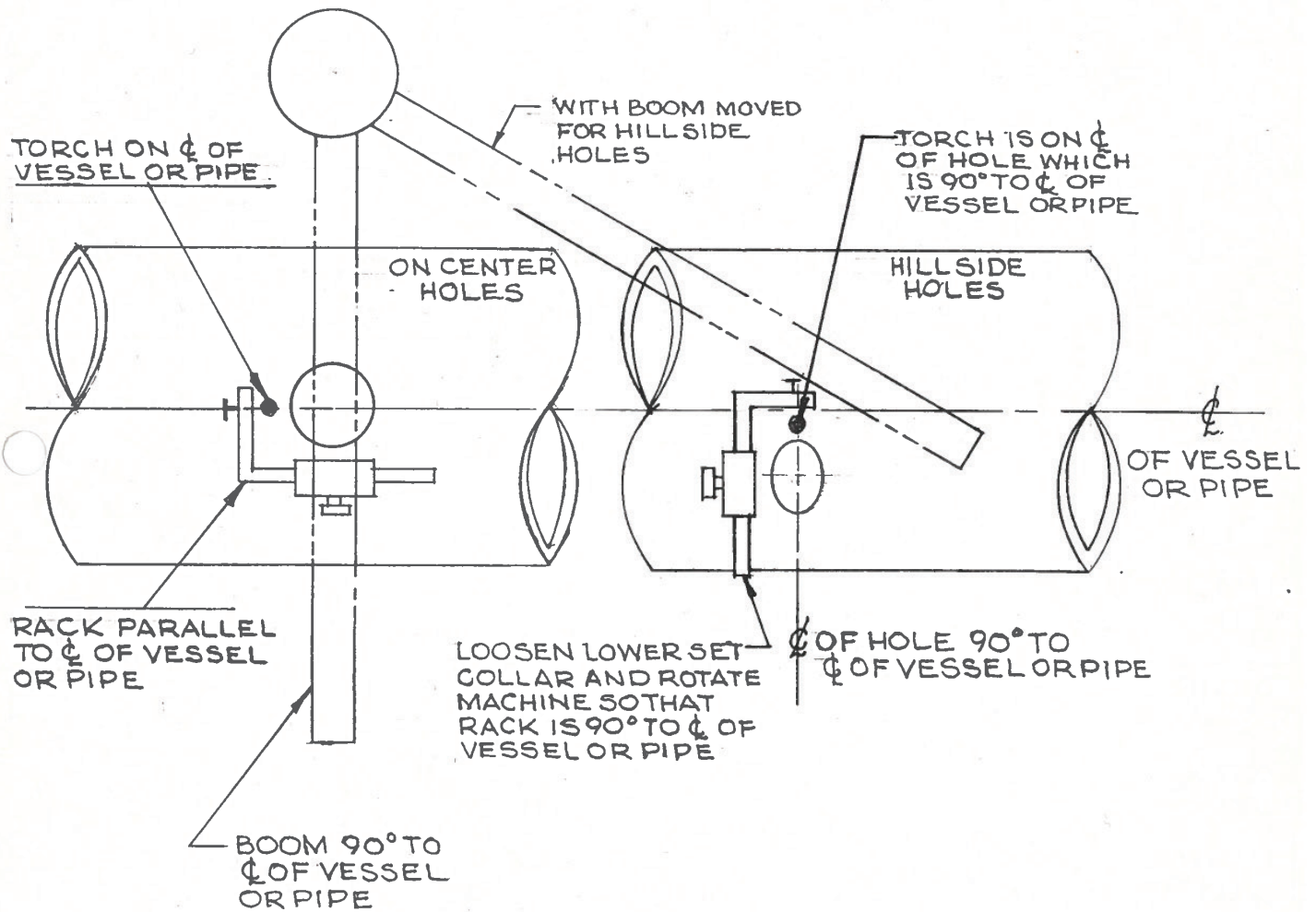
A. To burn a hillside hole the machine should be turned so that the horizontal rack is perpendicular to the vessel center line. The torch should be on the high side of the hole with the cam in the vertical position and the adjusting knob on top.

B. To position the machine in this manner loosen the set screws in the shaft coupling, leave the set screws tight in the set collar above the coupling, and turn the machine as described in section A.

C. See "Rise and Fall of the Cam" on page 6 for additional information.

See page 29 for center line and hillside illustration.

TIMING OF CAM ON CB-3 WITH
COLUMN & BOOM
OR MANIPULATOR MOUNTING



PREVENTIVE MAINTENANCE / CB-2, CB-3 CIRCLE BURNER

CAUTION: Make sure the input power (110 VAC or 220 VAC) from the Rotation Control is disconnected from the power source.

AFTER DAILY USE:

Refer to CB-2, CB-3 Exploded View Parts List. (CB-2 page 11; CB-3 page 13)

Racking System (Item #3): Inspect gear rack; hardened ways and wheels (remove all dirt, grease, and rust). Check hardened ways for nicks and replace if necessary. Lubricate with a dry spray lubricant. Adjust wheels for snug fit and smooth operation. Lubricate racker pinion with a dry teflon or graphite spray lubricant.

Large Vertical Racker (Item #4): Inspect wheels and remove all dirt, grease, and rust. Adjust wheels for snug fit and smooth operation. Lubricate racker pinion and wheels with a dry Teflon or graphite spray lubricant.

Slide Bar Mounting Assembly (Item #15): Inspect hardened ways (remove all dirt, grease, and rust). Check hardened ways for nicks and replace if necessary. Lubricate the hardened ways with a dry Teflon or graphite spray lubricant.

Refer to CB-2, CB-3 Electrical Wiring Diagram. (CB-2 page 12; CB-3 page 14)

CB-2, CB-3 Collector Ring (Item #2): Inspect cable connections for damages and that the connector is not cracked. Ensure that the connector is fastened properly to the Top Aluminum Gear (Item #13) on the CB-2, CB-3 Exploded View Parts List.

EVERY SIX MONTHS:

Refer to CB-2, CB-3 Exploded View Parts List. (CB-2 page 11; CB-3 page 13)

Top Aluminum Gear (Item # 13): Do not grease this gear. Inspect gear teeth (remove all dirt, grease, and rust). Lubricate with a dry Teflon or graphite spray lubricant. Replace gear if excessively worn.

P.M. Motor Assembly (Item #10): Do not grease this pinion. Inspect the drive pinion (remove all dirt, grease, and rust). Lubricate with a dry Teflon or graphite spray lubricant. Replace pinion if excessively worn. Check set screw and tighten if necessary. Adjust motor assembly using the four adjustable mounting fasteners so that proper gear mesh is achieved between the Top Aluminum Gear (Item # 15) and the motor drive pinion.

7" Cam Assembly (Item # 7): Inspect the slide rails and the cam pinion (remove all dirt, grease, and rust). Do not grease slide rails or cam pinion. Lubricate with a dry Teflon or graphite spray lubricant. Replace cam pinion if excessively worn. Tighten all fasteners as needed.

Refer to CB-2, CB-3 Electrical Component Chart. (CB-2 page 12; CB-3 page 14)

PREVENTIVE MAINTENANCE / CB-2, CB-3 CIRCLE BURNER

Rotation Control (Item #5): Open control box (use an air hose to blow out dust and dirt). Check all wires for breaks and replace if necessary. Check all electrical connectors and plugs if an electrical component fails refer to Rotation Control electrical component chart for replacement parts or return for service.

Small Brush Retainer Assembly (Item #4): Inspect black brush holders for cracks and replace if needed. Check and make sure all wires are soldered properly to the holders. Replace the brushes when their length is less than ½ inch long. Remove the brushes and sand them to ensure a smooth contact surface. Make sure all fasteners are tight.

Terminal Block (Item #3): Inspect the plastic terminal strip make sure it is not cracked, replace if necessary. Make sure all terminal connections are tight. Make sure all ground wires are connected to the mounting screws of the terminal strip.

EVERY TWELVE MONTHS:

Refer to CB-2, CB-3 Exploded View Parts List. (CB-2 page 11; CB-3 page 13)

1" Bearing with Fasteners (Item #20): Do not grease the bearing it is greased for life by the manufacturer. If the grease fitting has not been removed and plugged we suggest that you do so now. Earlier models may not have been plugged at time of assembly.

1-1/2" Bearing with Fasteners (Item # 21): Do not grease the bearing it is greased for life by the manufacturer. If the grease fitting has not been removed and plugged we suggest that you do so now. Earlier models may not have been plugged at time of assembly.

P.M. Motor Assembly (Item #10): Bodine gear motor lubrication. Fill gear motor to oil level indicator with worm gear oil conforming to AGMA#5EP compounded (SAE#90) oil or Bodine lubricant #LO-23. Do not overfill.

Transmission 5:1 Assembly (Item #9): Inspect for excessive wear and tear. Keep the transmission assembly clean and lubricate with Lubriplate #630-AA.

Refer to CB-2 CB-3 Electrical Component Chart. (CB-2 page 12; CB-3 page 14)

CB-1P Collector (Item # 2): The collector ring should be sanded once a year. If the collector ring is pitted too badly it should be replaced. Inspect all wires coming out of the collector ring for cut or missing insulation. All wires should be fastened to the center shaft with a nylon cable tie. Tighten four set screws if needed.

WARRANTY

Limited 3-Year Warranty*

Model _____
Serial No. _____
Date Purchased: _____
Where Purchased: _____

For a period ending one (1) year from the date of invoice, Manufacturer warrants that any new machine or part is free from defects in materials and workmanship and Manufacturer agrees to repair or replace at its option, any defective part or machine. HOWEVER, if the invoiced customer registers the Product Warranty by returning the Warranty Registration Card supplied with the product within 90 days of the invoice date, or by registering on-line at www.bugo.com, Manufacturer will extend the warranty period an additional two (2) years which will provide three (3) total years from the date of original invoice to customer. This warranty does not apply to machines which, after Manufacture’s inspection are determined by Manufacturer to have been damaged due to neglect, abuse, overloading, accident or improper usage. All shipping and handling charges will be paid by the customer.

The foregoing express warranty is exclusive and Manufacturer makes no representation or warranty (either express or implied) other than as set forth expressly in the preceding sentence. Specifically, Manufacturer makes no express or implied warranty of merchantability or fitness for any particular purpose with respect to any goods. Manufacturer shall not be subject to any other obligations or liabilities whatsoever with respect to machines or parts furnished by Manufacturer.

Manufacturer shall not in any event be liable to Distributor or any customer for any loss of profits, incidental or consequential damages or special damages of any kind. Distributor’s or customer’s sole and exclusive remedy against Manufacturer for any breach of warranty, negligence, strict liability or any other claim relating to goods delivered pursuant hereto shall be for repair or replacement (at Manufacturer’s option) of the machines or parts affected by such breach.

Distributor’s Warranty:

In no event shall Manufacturer be liable to Distributor or to any customer thereof for any warranties, representations or promises, express or implied, extended by Distributor without the advance written consent of Manufacturer, including but not limited to any and all warranties of merchantability or fitness for a particular purpose and all warranties, representations or promises which exceed or are different from the express limited warranty set forth above. Distributor agrees to indemnify and hold Manufacturer harmless from any claim by a customer based upon any express or implied warranty by Distributor which exceeds or differs from Manufacturer’s express limited warranty set forth above.

HOW TO OBTAIN SERVICE:

If you think this machine is not operating properly, re-read the instruction manual carefully, then call your Authorized BUG-O dealer/distributor. If they cannot give you the necessary service, write or phone us to tell us exactly what difficulty you have experienced. BE SURE to mention the MODEL and SERIAL numbers.

*Bug-O System’s warranty applies to Bug-O components only. Where other brands of power sources, wire feeders or sub components are a part of Bug-O Equipment, please refer to that specific Manufacturer’s manual for warranty specifications on their components.